

Ep-CAM / CD326 (Cytoplasmic Domain) (Epithelial Marker) Antibody

Mouse Monoclonal Antibody [Clone EGP40/1110]

Catalog No	Format	Size
4072-MSM10-P0	Purified Ab with BSA and Azide at 200ug/ml	20 ug
4072-MSM10-P1	Purified Ab with BSA and Azide at 200ug/ml	100 ug
4072-MSM10-P1ABX	Purified Ab WITHOUT BSA and Azide at 1.0mg/ml	100 ug

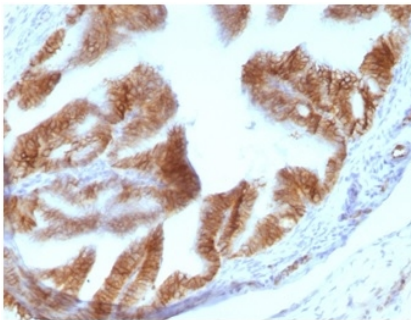
Applications	Tested Dillution	Note
Immunohistochemistry (IHC)	1-2ug/ml	30 min at RT. Staining of formalin-fixed tissues requires heating tissue sections in 10mM Tris with 1mM EDTA, pH 9.0, for 45 min at 95°C followed by cooling at RT for 20 minutes

Product Details

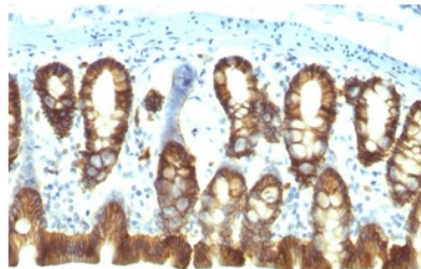
Clone	EGP40/1110
Gene Name	EPCAM
Immunogen	Recombinant fragment from cytoplasmic domain (around aa 289-314) of human EpCAM (exact sequence is proprietary)
Host	Mouse
Clonality	Monoclonal
Isotype / Light Chain	IgG2b / Kappa
Mol. Weight of Antigen	40-43kDa
Cellular Localization	Cell junction, Lateral cell membrane, Tight junction
Species Reactivity	Cat, Dog, Human
Positive Control	MCF-7 or HT29 cells. Human lung or ovarian carcinoma (IHC).

*Optimal dilution for a specific application should be determined.

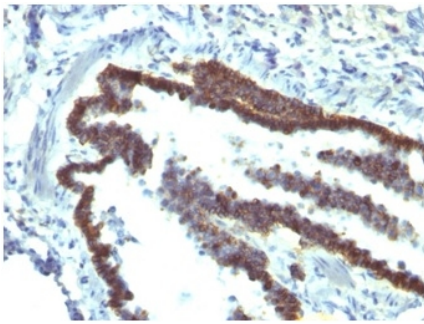
Product Images for Ep-CAM / CD326 (Cytoplasmic Domain) (Epithelial Marker) Antibody



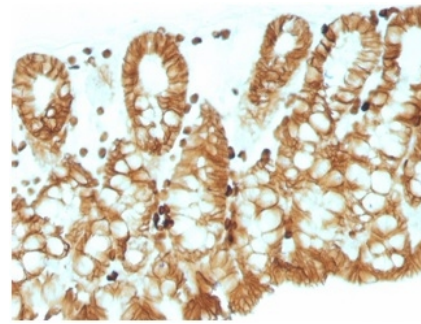
Formalin-fixed, paraffin-embedded rat oviduct stained with EpCAM Mouse Monoclonal Antibody (EGP40/1110).



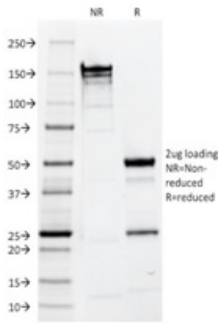
Formalin-fixed, paraffin-embedded rat colon stained with EpCAM Mouse Monoclonal Antibody (EGP40/1110).



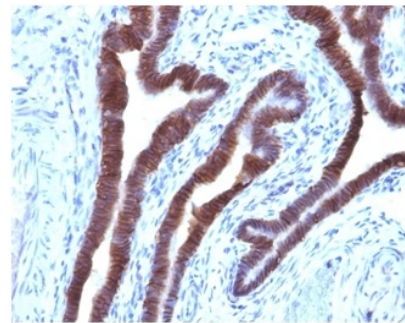
Formalin-fixed, paraffin-embedded rat lung stained with EpCAM Mouse Monoclonal Antibody (EGP40/1110).



Formalin-fixed, paraffin-embedded mouse colon stained with EpCAM Mouse Monoclonal Antibody (EGP40/1110).



SDS-PAGE Analysis Purified EpCAM Mouse Monoclonal Antibody (EGP40/1110). Confirmation of Purity and Integrity of Antibody.



Formalin-fixed, paraffin-embedded human ovarian carcinoma stained with EpCAM Mouse Monoclonal Antibody (EGP40/1110).

Specificity & Comments

EGP40 is a 40-43kDa transmembrane epithelial glycoprotein, also identified as epithelial specific antigen (ESA), or epithelial cellular adhesion molecule (Ep-CAM). It is expressed on baso-lateral cell surface in most simple epithelia and a vast majority of carcinomas. This antibody has been used to distinguish adenocarcinoma from pleural mesothelioma and hepatocellular carcinoma. This antibody is also useful in distinguishing serous carcinomas of the ovary from mesothelioma.

Supplied As

200ug/ml of Ab purified from Bioreactor Concentrate by Protein A/G. Prepared in 10mM PBS with 0.05% BSA & 0.05% azide. Also available WITHOUT BSA & azide at 1.0mg/ml.

Storage and Stability

Antibody with azide - store at 2 to 8 °C. Antibody without azide - store at -20 to -80 °C. Antibody is stable for 24 months. Non-hazardous. No MSDS required.

Research Areas

Stem Cell Differentiation

Limitations and Warranty

This antibody is available for research use only and is not approved for use in diagnosis. There are no warranties, expressed or implied, which extend beyond this description. Company is not liable for any personal injury or economic loss resulting from this product.