

## Ep-CAM / CD326 (Extracellular Domain) (Epithelial Marker) Antibody

Mouse Monoclonal Antibody [Clone EGP40/1373]

Catalog No	Format	Size
4072-MSM13-P0	Purified Ab with BSA and Azide at 200ug/ml	20 ug
4072-MSM13-P1	Purified Ab with BSA and Azide at 200ug/ml	100 ug
4072-MSM13-P1ABX	Purified Ab WITHOUT BSA and Azide at 1.0mg/ml	100 ug

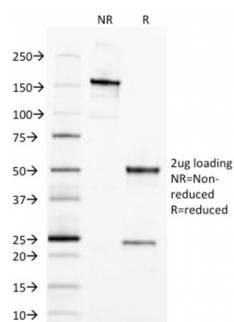
Applications	Tested Dillution	Note
Flow Cytometry (Flow)	1-2ug/million cells	
Immunofluorescence (IF)	1-3ug/ml	
Immunohistochemistry (IHC)	1-2ug/ml	30 min at RT. Staining of formalin-fixed tissues requires heating tissue sections in 10mM Tris with 1mM EDTA, pH 9.0, for 45 min at 95°C followed by cooling at RT for 20 minutes
Western Blot (WB)	2-4ug/ml	

### Product Details

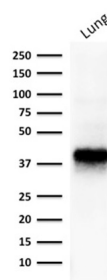
<b>Clone</b>	EGP40/1373
<b>Gene Name</b>	EPCAM
<b>Immunogen</b>	Recombinant fragment from the extracellular domain of human EpCAM protein (around aa100-224) (exact sequence is proprietary)
<b>Host</b>	Mouse
<b>Clonality</b>	Monoclonal
<b>Isotype / Light Chain</b>	IgG / Kappa
<b>Mol. Weight of Antigen</b>	40-43kDa
<b>Cellular Localization</b>	Cell junction, Lateral cell membrane, Tight junction
<b>Species Reactivity</b>	Cat, Dog, Human
<b>Positive Control</b>	MCF-7 or HT29 cells. Human lung or ovarian carcinoma (IHC).

\*Optimal dilution for a specific application should be determined.

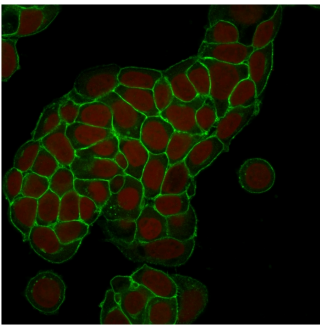
### Product Images for Ep-CAM / CD326 (Extracellular Domain) (Epithelial Marker) Antibody



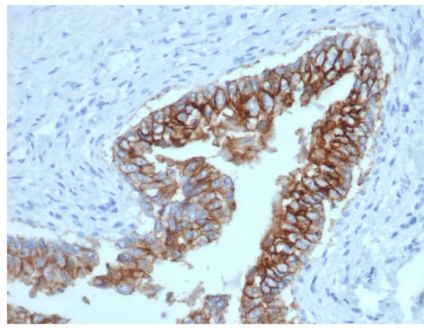
SDS-PAGE Analysis Purified EpCAM Mouse Monoclonal Antibody (EGP40/1373). Confirmation of Integrity and Purity of Antibody.



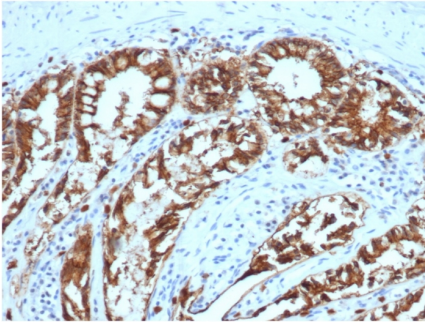
Western Blot Analysis of human lung tissue lysate using EpCAM Mouse Monoclonal Antibody (EGP40/1373).



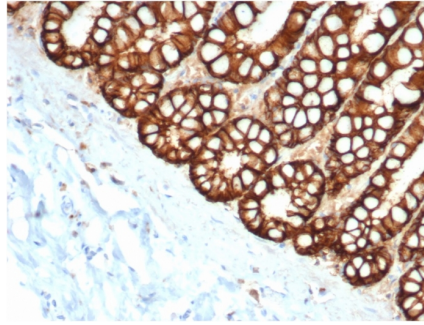
Immunofluorescent analysis of MCF-7 cells stained with EpCAM Mouse Monoclonal Antibody (EGP40/1373) labeled with CF488 (green). RedDot is used to label the nuclei.



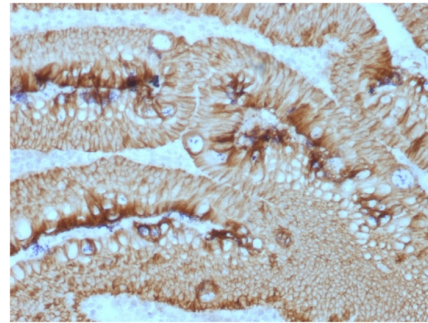
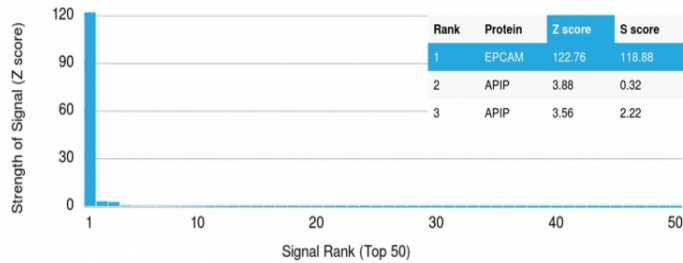
Formalin-fixed, paraffin-embedded canine (dog) bladder stained with Ep-CAM Mouse Monoclonal Antibody (EGP40/1373).



Formalin-fixed, paraffin-embedded canine (dog) colon stained with Ep-CAM Mouse Monoclonal Antibody (EGP40/1373).



Formalin-fixed, paraffin-embedded feline (cat) small intestine stained with Ep-CAM Mouse Monoclonal Antibody (EGP40/1373).



Formalin-fixed, paraffin-embedded human rectal mass stained with EpCAM Mouse Monoclonal Antibody (EGP40/1373).

Analysis of Protein Array containing >19,000 full-length human proteins using EpCAM Mouse Monoclonal Antibody (EGP40/1373) Z- and S- Score: The Z-score represents the strength of a signal that a monoclonal antibody (MAb) (in combination with a fluorescently-tagged anti-IgG secondary antibody) produces when binding to a particular protein on the HuProt™ array. Z-scores are described in units of standard deviations (SD's) above the mean value of all signals generated on that array. If targets on HuProt™ are arranged in descending order of the Z-score, the S-score is the difference (also in units of SD's) between the Z-score. S-score therefore represents the relative target specificity of a MAb to its intended target. A MAb is considered to specific to its intended target, if the MAb has an S-score of at least 2.5. For example, if a MAb binds to protein X with a Z-score of 43 and to protein Y with a Z-score of 14, then the S-score for the binding of that MAb to protein X is equal to 29.

**Specificity & Comments**

EGP40 is a 40-43kDa transmembrane epithelial glycoprotein, also identified as epithelial specific antigen (ESA), or epithelial cellular adhesion molecule (Ep-CAM). It is expressed on baso-lateral cell surface in most simple epithelia and a vast majority of carcinomas. This antibody has been used to distinguish adenocarcinoma from pleural mesothelioma and hepatocellular carcinoma. This antibody is also useful in distinguishing serous carcinomas of the ovary from mesothelioma.

---

**Limitations and Warranty**

This antibody is available for research use only and is not approved for use in diagnosis. There are no warranties, expressed or implied, which extend beyond this description. Company is not liable for any personal injury or economic loss resulting from this product.

---

**Supplied As**

200ug/ml of Ab purified from Bioreactor Concentrate by Protein A/G. Prepared in 10mM PBS with 0.05% BSA & 0.05% azide. Also available WITHOUT BSA & azide at 1.0mg/ml.

---

**Storage and Stability**

Antibody with azide - store at 2 to 8 °C. Antibody without azide - store at -20 to -80 °C. Antibody is stable for 24 months. Non-hazardous. No MSDS required.

---

**Research Areas**

Stem Cell Differentiation

---