

Ep-CAM / CD326 (Extracellular Domain) (Epithelial Marker) Antibody

Mouse Monoclonal Antibody [Clone EGP40/837]

Catalog No	Format	Size
4072-MSM7-P0	Purified Ab with BSA and Azide at 200ug/ml	20 ug
4072-MSM7-P1	Purified Ab with BSA and Azide at 200ug/ml	100 ug
4072-MSM7-P1ABX	Purified Ab WITHOUT BSA and Azide at 1.0mg/ml	100 ug

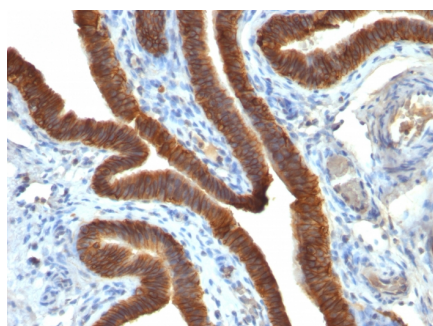
Applications	Tested Dillution	Note
Flow Cytometry (Flow)	1-2ug/million cells	
Immunofluorescence (IF)	1-3ug/ml	
Immunohistochemistry (IHC)	1-2ug/ml	30 min at RT. Staining of formalin-fixed tissues requires heating tissue sections in 10mM Tris with 1mM EDTA, pH 9.0, for 45 min at 95°C followed by cooling at RT for 20 minutes
Western Blot (WB)	2-4ug/ml	

Product Details

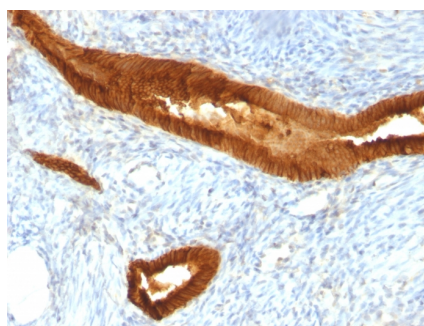
Clone	EGP40/837
Gene Name	EPCAM
Immunogen	Recombinant human TACSTD1 protein
Host	Mouse
Clonality	Monoclonal
Isotype / Light Chain	IgG1
Mol. Weight of Antigen	40-43kDa
Cellular Localization	Cell junction, Cell surface, Lateral cell membrane, Tight junction
Species Reactivity	Human
Positive Control	HT29 cells. Breast tumor.

*Optimal dilution for a specific application should be determined.

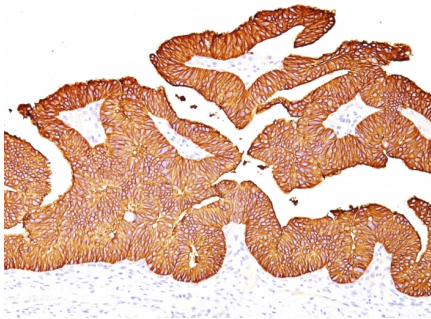
Product Images for Ep-CAM / CD326 (Extracellular Domain) (Epithelial Marker) Antibody



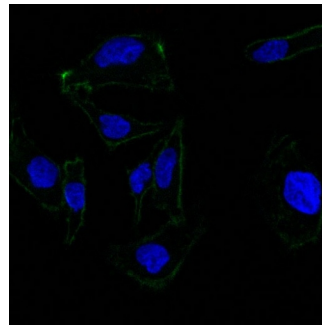
Formalin-fixed, paraffin-embedded human ovarian carcinoma stained with EpCAM Mouse Monoclonal Antibody (EGP40/837).



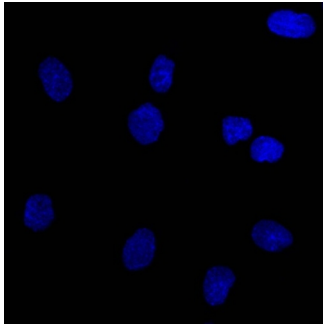
Formalin-fixed, paraffin-embedded human endometrial cancer stained with EpCAM Mouse Monoclonal Antibody (EGP40/837).



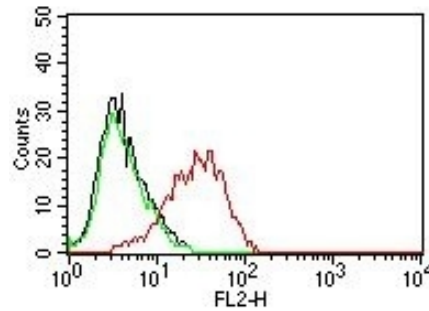
Formalin-fixed, paraffin-embedded human colon carcinoma stained with EpCAM Mouse Monoclonal Antibody (EGP40/837).



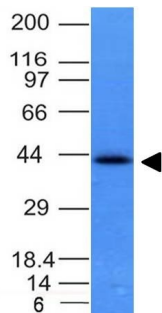
Confocal Immunofluorescent analysis of SK-OV-3 cells using AF488-labeled EpCAM Mouse Monoclonal Antibody (EGP40/837) (Green). DAPI was used to stain the cell nuclei (blue).



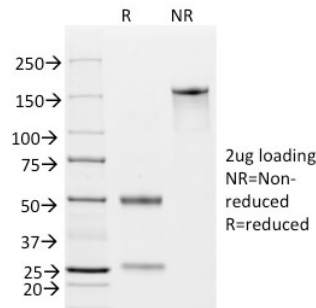
Confocal Immunofluorescent analysis of SK-OV-3 cells using AF488-labeled Isotype Control Mouse MAb (IgG1) (Green). DAPI was used to stain the cell nuclei (blue). (Negative Control)



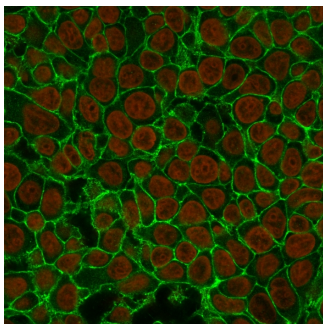
Flow Cytometry of human MCF-7 cells. Black: cells alone; Green: Isotype Control; Red: PE-labeled EpCAM Mouse Monoclonal Antibody (EGP40/837).



Western Blot of HCT116 cell lysate using EpCAM Mouse MAb (EGP40/837).



SDS-PAGE Analysis of Purified EpCAM Mouse Monoclonal Antibody (EGP40/837). Confirmation of Integrity and Purity of Antibody.



Immunofluorescence Analysis of MCF-7 cells labeling Ep-CAM with EpCAM Mouse MAb (EGP40/837), followed by Goat anti-Mouse IgG-CF488 (Green). The nuclear counterstain is NucSpot (Red).

Specificity & Comments

EGP40 is a 40-43kDa transmembrane epithelial glycoprotein, also identified as epithelial specific antigen (ESA), or epithelial cellular adhesion molecule (Ep-CAM). It is expressed on baso-lateral cell surface in most simple epithelia and a vast majority of carcinomas with the exception of adult squamous epithelium, hepatocytes and gastric epithelial cells. This antibody has been used to distinguish adenocarcinoma from pleural mesothelioma and hepatocellular carcinoma. This antibody is also useful in distinguishing serous carcinomas of the ovary from mesothelioma.

Limitations and Warranty

This antibody is available for research use only and is not approved for use in diagnosis. There are no warranties, expressed or implied, which extend beyond this description. Company is not liable for any personal injury or economic loss resulting from this product.

Supplied As

200ug/ml of Ab Purified from Bioreactor Concentrate by Protein A/G. Prepared in 10mM PBS with 0.05% BSA & 0.05% azide. Also available WITHOUT BSA & azide at 1.0mg/ml.

Storage and Stability

Antibody with azide - store at 2 to 8°C. Antibody without azide - store at -20 to -80°C. Antibody is stable for 24 months. Non-hazardous. No MSDS required.

Research Areas

Stem Cell Differentiation
