

Recombinant EpCAM / CD326 (Epithelial Marker) Antibody

Rabbit Monoclonal Antibody [Clone EGP40/1555R]

Catalog No	Format	Size
4072-RBM15-P0	Purified Ab with BSA and Azide at 200ug/ml	20 ug
4072-RBM15-P1	Purified Ab with BSA and Azide at 200ug/ml	100 ug
4072-RBM15-P1ABX	Purified Ab WITHOUT BSA and Azide at 1.0mg/ml	100 ug

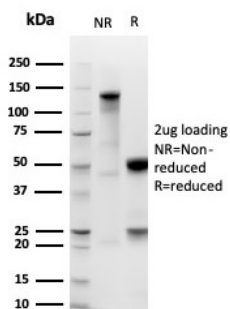
Applications	Tested Dillution	Note
Flow Cytometry (Flow)	1-2ug/million cells	
Immunofluorescence (IF)	1-3ug/ml	
Immunohistochemistry (IHC)	1-2ug/ml	30 min at RT. Staining of formalin-fixed tissues requires heating tissue sections in 10mM Tris with 1mM EDTA, pH 9.0, for 45 min at 95°C followed by cooling at RT for 20 minutes
Western Blot (WB)	2-4ug/ml	

Product Details

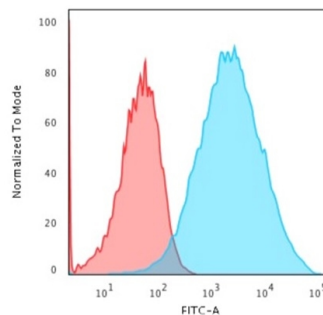
Clone	EGP40/1555R
Gene Name	EPCAM
Immunogen	Recombinant full-length human TACSTD1 protein
Host	Rabbit
Clonality	Monoclonal
Isotype / Light Chain	IgG / Kappa
Mol. Weight of Antigen	40-43kDa
Cellular Localization	Cell junction, Lateral cell membrane, Tight junction
Species Reactivity	Human, Mouse
Positive Control	HT29 cells or breast tumor, MCF-7

*Optimal dilution for a specific application should be determined.

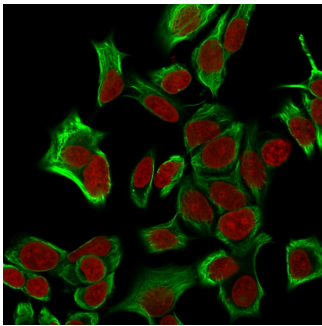
Product Images for Recombinant EpCAM / CD326 (Epithelial Marker) Antibody



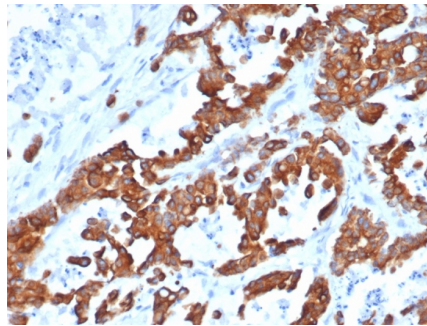
SDS-PAGE Analysis Purified EpCAM Recombinant Rabbit Monoclonal Antibody (EGP40/1555R). Confirmation of Integrity and Purity of Antibody.



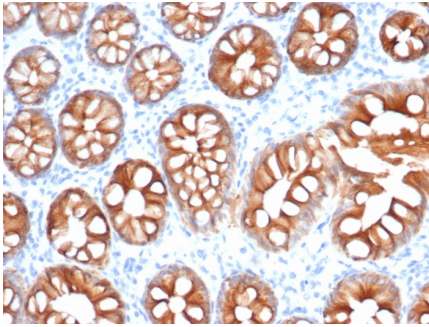
Flow Cytometric Analysis of trypsinized-MCF-7 cells. EpCAM Recombinant Rabbit Monoclonal Antibody (EGP40/1555R) followed by goat anti-mouse IgG-CF488 (blue); isotype control (red).



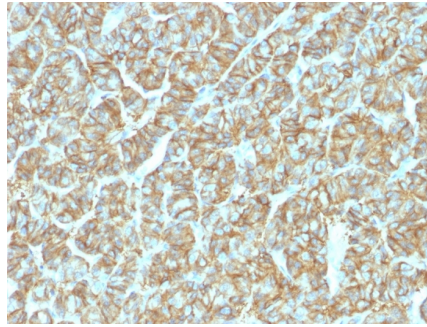
Confocal immunofluorescence analysis of MeOH-fixed HeLa cells. EpCAM Recombinant Rabbit Monoclonal Antibody (EGP40/1555R) followed by goat anti-mouse IgG-CF488 (green). Nuclei counterstained with RedDot



Formalin-fixed, paraffin-embedded human prostate carcinoma stained with EpCAM Recombinant Rabbit Monoclonal Antibody (EGP40/1555R).



Formalin-fixed, paraffin-embedded human colon carcinoma stained with EpCAM Recombinant Rabbit Monoclonal Antibody (EGP40/1555R).



Formalin-fixed, paraffin-embedded human thyroid carcinoma stained with EpCAM Recombinant Rabbit Monoclonal Antibody (EGP40/1555R).

Specificity & Comments

Recognizes a 40-43kDa transmembrane epithelial glycoprotein, identified as epithelial specific antigen (ESA), or epithelial cellular adhesion molecule (EpCAM). EpCAM is expressed on baso-lateral cell surface in most simple epithelia and a vast majority of carcinomas. This antibody has been used to distinguish adenocarcinoma from pleural mesothelioma and hepatocellular carcinoma. It is also useful in distinguishing serous carcinomas of the ovary from mesothelioma. This epithelial antigen plays an important role as a tumor-cell marker in lymph nodes from patients with esophageal carcinoma otherwise classified as node-negative. Epithelial antigen has also been suggested as a discriminator between basal cell and baso-squamous carcinomas, and squamous cell carcinoma of the skin.

Limitations and Warranty

This antibody is available for research use only and is not approved for use in diagnosis. There are no warranties, expressed or implied, which extend beyond this description. Company is not liable for any personal injury or economic loss resulting from this product.

Supplied As

200ug/ml of Ab purified by Protein A. Prepared in 10mM PBS with 0.05% BSA & 0.05% azide. Also available WITHOUT BSA & azide at 1.0mg/ml.

Storage and Stability

Antibody with azide - store at 2 to 8 °C. Antibody without azide - store at -20 to -80 °C. Antibody is stable for 24 months. Non-hazardous. No MSDS required.

Research Areas

Stem Cell Differentiation