

Recombinant Ep-CAM / CD326 (Extracellular Domain) (Epithelial Marker) Antibody

Rabbit Monoclonal Antibody [Clone EGP40/1556R]

Catalog No	Format	Size
4072-RBM16-P0	Purified Ab with BSA and Azide at 200ug/ml	20 ug
4072-RBM16-P1	Purified Ab with BSA and Azide at 200ug/ml	100 ug
4072-RBM16-P1ABX	Purified Ab WITHOUT BSA and Azide at 1.0mg/ml	100 ug

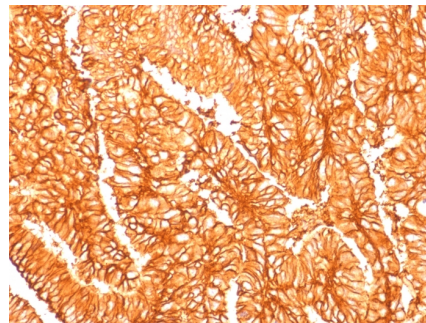
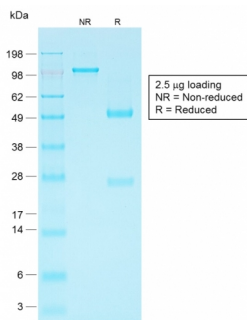
Applications	Tested Dillution	Note
Flow Cytometry (Flow)	1-2ug/million cells	
Immunofluorescence (IF)	1-3ug/ml	
Immunohistochemistry (IHC)	1-2ug/ml	30 min at RT. Staining of formalin-fixed tissues requires heating tissue sections in 10mM Tris with 1mM EDTA, pH 9.0, for 45 min at 95°C followed by cooling at RT for 20 minutes

Product Details

Clone	EGP40/1556R
Gene Name	EPCAM
Immunogen	Recombinant human full-length TACSTD1 protein
Host	Rabbit
Clonality	Monoclonal
Isotype / Light Chain	IgG / Kappa
Mol. Weight of Antigen	40-43kDa
Cellular Localization	Cell junction, Lateral cell membrane, Tight junction
Species Reactivity	Human, Mouse
Positive Control	MCF-7 or HT29 cells. Breast tumor.

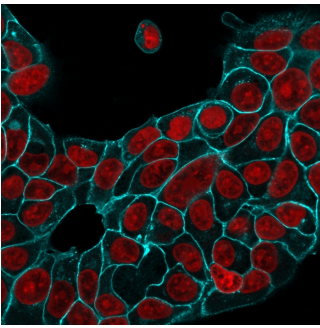
*Optimal dilution for a specific application should be determined.

Product Images for Recombinant Ep-CAM / CD326 (Extracellular Domain) (Epithelial Marker) Antibody

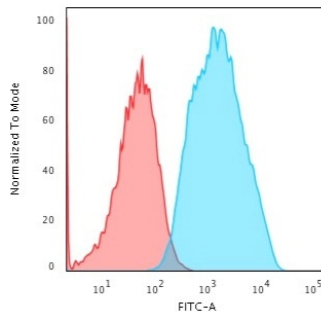


SDS-PAGE Analysis Purified EpCAM Rabbit Recombinant Monoclonal Antibody (EGP40/1556R). Confirmation of Purity and Integrity of Antibody.

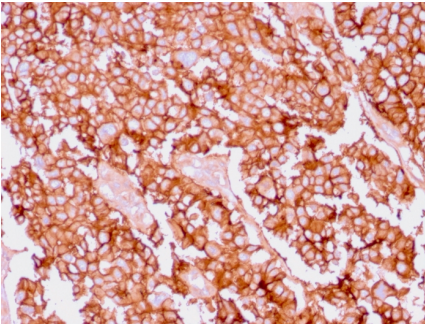
Formalin-fixed, paraffin-embedded human Colon Carcinoma stained with EpCAM Rabbit Recombinant Monoclonal Antibody (EGP40/1556R).



Immunofluorescence Analysis of MCF-7 cells labeling Ep-CAM with EpCAM Rabbit Recombinant MAb (EGP40/1556R) followed by Goat anti-Rabbit IgG-CF488 (Cyan). Reddot is used to stain the nuclei red.



Flow Cytometric Analysis of trypsinised MCF-7 cells using EpCAM Rabbit Recombinant Monoclonal Antibody (EGP40/1556R) followed by Goat anti-Rabbit IgG-CF488 (Blue); Isotype Control (Red).



Formalin-fixed, paraffin-embedded human Ovary stained with EpCAM Rabbit Recombinant Monoclonal Antibody (EGP40/1556R).

Specificity & Comments

EGP40 is a 40-43kDa transmembrane epithelial glycoprotein, also identified as epithelial specific antigen (ESA), or epithelial cellular adhesion molecule (EpCAM). It is expressed on baso-lateral cell surface in most simple epithelia and a vast majority of carcinomas with the exception of adult squamous epithelium, hepatocytes and gastric epithelial cells. This antibody has been used to distinguish adenocarcinoma from pleural mesothelioma and hepatocellular carcinoma. This antibody is also useful in distinguishing serous carcinomas of the ovary from mesothelioma.

Supplied As

200ug/ml of Ab Purified by Protein A. Prepared in 10mM PBS with 0.05% BSA & 0.05% azide. Also available WITHOUT BSA & azide at 1.0mg/ml.

Storage and Stability

Antibody with azide - store at 2 to 8°C. Antibody without azide - store at -20 to -80°C. Antibody is stable for 24 months. Non-hazardous. No MSDS required.

Research Areas

Stem Cell Differentiation

Limitations and Warranty

This antibody is available for research use only and is not approved for use in diagnosis. There are no warranties, expressed or implied, which extend beyond this description. Company is not liable for any personal injury or economic loss resulting from this product.