

## Recombinant EpCAM / CD326 (Epithelial Marker) Antibody

Rabbit Monoclonal Antibody [Clone EGP40/2041R]

Catalog No	Format	Size
4072-RBM21-P0	Purified Ab with BSA and Azide at 200ug/ml	20 ug
4072-RBM21-P1	Purified Ab with BSA and Azide at 200ug/ml	100 ug
4072-RBM21-P1ABX	Purified Ab WITHOUT BSA and Azide at 1.0mg/ml	100 ug

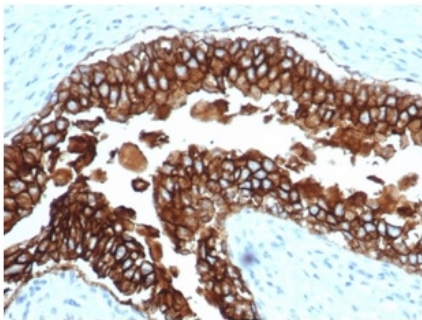
Applications	Tested Dillution	Note
Immunohistochemistry (IHC)	1-2ug/ml	30 min at RT. Staining of formalin-fixed tissues requires heating tissue sections in 10mM Tris with 1mM EDTA, pH 9.0, for 45 min at 95°C followed by cooling at RT for 20 minutes

### Product Details

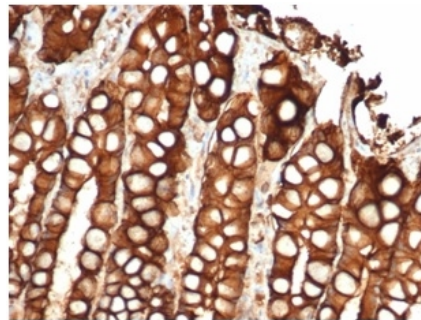
<b>Clone</b>	EGP40/2041R
<b>Gene Name</b>	EPCAM
<b>Immunogen</b>	Recombinant fragment from the extracellular domain of human EpCAM protein (around aa100-224) (exact sequence is proprietary)
<b>Host</b>	Rabbit
<b>Clonality</b>	Monoclonal
<b>Isotype / Light Chain</b>	IgG / Kappa
<b>Mol. Weight of Antigen</b>	40-43kDa
<b>Cellular Localization</b>	Cell junction, Lateral cell membrane, Tight junction
<b>Species Reactivity</b>	Cat, Dog, Human
<b>Positive Control</b>	HT29 or MCF-7 cells. Human breast or ovarian carcinoma.

\*Optimal dilution for a specific application should be determined.

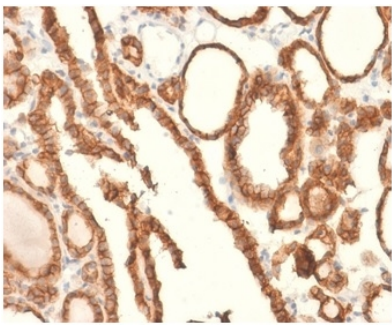
### Product Images for Recombinant EpCAM / CD326 (Epithelial Marker) Antibody



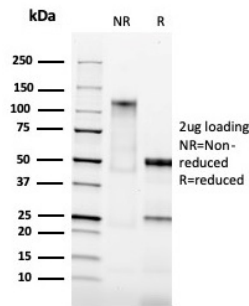
Formalin-fixed, paraffin-embedded canine (dog) bladder stained with EpCAM Recombinant Rabbit Monoclonal Antibody (EGP40/2041R).



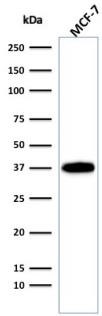
Formalin-fixed, paraffin-embedded feline (cat) small intestine stained with EpCAM Recombinant Rabbit Monoclonal Antibody (EGP40/2041R).



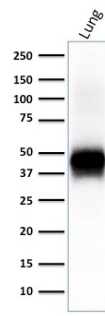
Formalin-fixed, paraffin-embedded human thyroid carcinoma stained with EpCAM Recombinant Rabbit Monoclonal Antibody (EGP40/2041R).



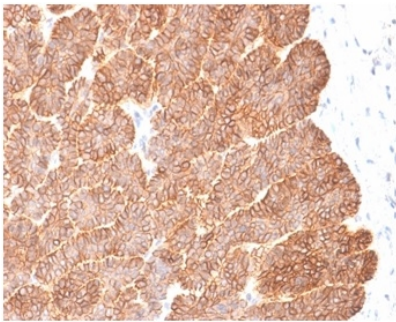
SDS-PAGE Analysis Purified EpCAM Recombinant Rabbit Monoclonal Antibody (EGP40/2041R). Confirmation of Purity and Integrity of Antibody.



Western blot analysis of MCF-7 cell lysate using EpCAM Recombinant Rabbit Monoclonal Antibody (EGP40/2041R).



Western blot analysis of human lung tissue lysate using EpCAM Recombinant Rabbit Monoclonal Antibody (EGP40/2041R).



Formalin-fixed, paraffin-embedded human basal cell carcinoma stained with EpCAM Recombinant Rabbit Monoclonal Antibody (EGP40/2041R).

### Specificity & Comments

Epitope of this MAb is mapped between aa 202-212 of EGP40, which is a 40-43kDa transmembrane epithelial glycoprotein, also identified as epithelial specific antigen (ESA), or epithelial cellular adhesion molecule (Ep-CAM). It is expressed on baso-lateral cell surface in most simple epithelia and a vast majority of carcinomas. Antibody to Ep-CAM has been used to distinguish adenocarcinoma from pleural mesothelioma and hepatocellular carcinoma. This antibody is also useful in distinguishing serous carcinomas of the ovary from mesothelioma.

### Supplied As

200ug/ml of Ab purified by Protein A. Prepared in 10mM PBS with 0.05% BSA & 0.05% azide. Also available WITHOUT BSA & azide at 1.0mg/ml.

### Storage and Stability

Antibody with azide - store at 2 to 8 °C. Antibody without azide - store at -20 to -80 °C. Antibody is stable for 24 months. Non-hazardous. No MSDS required.

### Research Areas

Stem Cell Differentiation

### Limitations and Warranty

This antibody is available for research use only and is not approved for use in diagnosis. There are no warranties, expressed or implied, which extend beyond this description. Company is not liable for any personal injury or economic loss resulting from this product.