

## SMAD9 Antibody

Mouse Monoclonal Antibody [Clone PCR-P-SMAD9-2F4]

Catalog No	Format	Size
4093-MSM1-P0	Purified Ab with BSA and Azide at 200ug/ml	20 ug
4093-MSM1-P1	Purified Ab with BSA and Azide at 200ug/ml	100 ug
4093-MSM1-P1ABX	Purified Ab WITHOUT BSA and Azide at 1.0mg/ml	100 ug

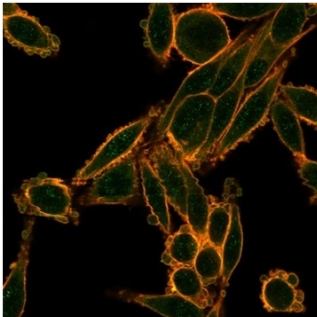
Applications	Tested Dillution	Note
Flow Cytometry (Flow)	1-2ug/million cells	
Immunofluorescence (IF)	1-3ug/ml	

### Product Details

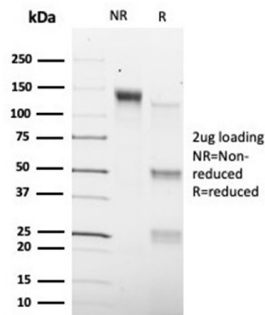
<b>Clone</b>	PCR-P-SMAD9-2F4
<b>Gene Name</b>	SMAD9
<b>Immunogen</b>	Recombinant full-length human SMAD9 protein
<b>Host</b>	Mouse
<b>Clonality</b>	Monoclonal
<b>Isotype / Light Chain</b>	IgG1 / Kappa
<b>Mol. Weight of Antigen</b>	52.4kDa
<b>Cellular Localization</b>	Cytoplasm, Nucleus
<b>Species Reactivity</b>	Human
<b>Positive Control</b>	HeLa, U87 or Ramos cells.

\*Optimal dilution for a specific application should be determined.

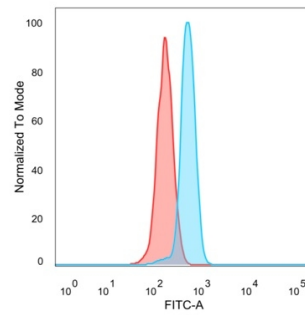
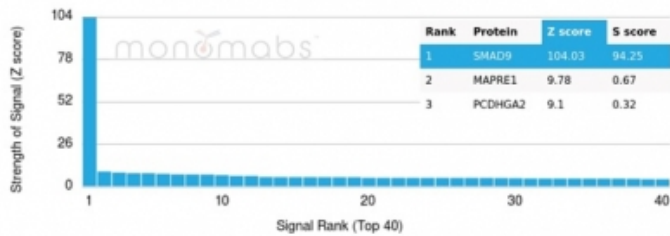
### Product Images for SMAD9 Antibody



Immunofluorescence Analysis of PFA-fixed HeLa cells stained using SMAD9 Mouse Monoclonal Antibody (PCR-P-SMAD9-2F4) followed by goat anti-mouse IgG-CF488 (green). CF640A phalloidin (red).



Immunofluorescence Analysis of PFA-fixed HeLa cells stained using SMAD9 Mouse Monoclonal Antibody (PCR-P-SMAD9-2F4)



followed by goat anti-mouse IgG-CF488 (green). CF640A phalloidin (red).

Flow cytometric analysis of PFA-fixed HeLa cells. SMAD9 Mouse Monoclonal Antibody (PCRP-SMAD9-2F4) followed by goat anti-mouse IgG-CF488 (blue); isotype control (red).

### Specificity & Comments

Smad proteins, the mammalian homologs of the Drosophila mothers against dpp (Mad) have been implicated as downstream effectors of TGF $\beta$ /BMP signaling. Smad1 (also designated Madr1 or JV4-1), Smad5 and mammalian Smad8 (also designated Smad9 or MadH6) are effectors of BMP2 and BMP4 function while Smad2 (also designated Madr2 or JV18-1) and Smad3 are involved in TGF $\beta$  and activin-mediated growth modulation. Smad4 (also designated DPC4) has been shown to mediate all of the above activities through interaction with various Smad family members. Smad6 and Smad7 regulate the response to activin/TGF $\beta$  signaling by interfering with TGF $\beta$ -mediated phosphorylation of other Smad family members.

### Limitations and Warranty

This antibody is available for research use only and is not approved for use in diagnosis. There are no warranties, expressed or implied, which extend beyond this description. Company is not liable for any personal injury or economic loss resulting from this product.

### Supplied As

200ug/ml of Ab purified from Bioreactor Concentrate by Protein A/G. Prepared in 10mM PBS with 0.05% BSA & 0.05% azide. Also available WITHOUT BSA & azide at 1.0mg/ml.

### Storage and Stability

Antibody with azide - store at 2 to 8 °C. Antibody without azide - store at -20 to -80 °C. Antibody is stable for 24 months. Non-hazardous. No MSDS required.

### Research Areas

Cardiovascular, Nuclear Marker, Signal Transduction