

MBD1 (Methyl-CpG Binding Domain Protein 1) Antibody

Mouse Monoclonal Antibody [Clone CPTC-MBD1-1]

Catalog No	Format	Size
4152-MSM1-P0	Purified Ab with BSA and Azide at 200ug/ml	20 ug
4152-MSM1-P1	Purified Ab with BSA and Azide at 200ug/ml	100 ug
4152-MSM1-P1ABX	Purified Ab WITHOUT BSA and Azide at 1.0mg/ml	100 ug

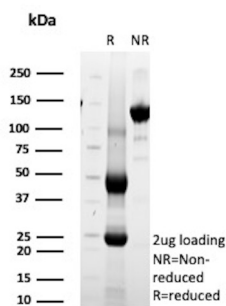
Applications	Tested Dillution	Note
Immunohistochemistry (IHC)	1-2ug/ml	30 min at RT. Staining of formalin-fixed tissues requires heating tissue sections in 10mM Tris with 1mM EDTA, pH 9.0, for 45 min at 95°C followed by cooling at RT for 20 minutes

Product Details

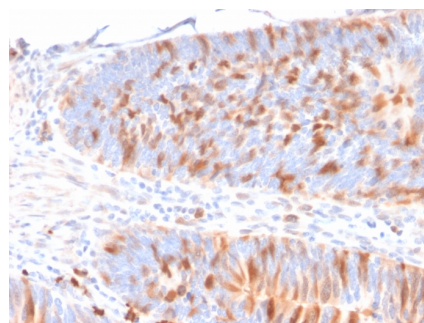
Clone	CPTC-MBD1-1
Gene Name	MBD1
Immunogen	Recombinant human MBD1 protein
Host	Mouse
Clonality	Monoclonal
Isotype / Light Chain	IgG2 / Kappa
Mol. Weight of Antigen	~80kDa
Cellular Localization	Chromosome, Nucleus, Nucleus matrix, Nucleus speckle
Species Reactivity	Human
Positive Control	Human tonsil or colon (IHC).

*Optimal dilution for a specific application should be determined.

Product Images for MBD1 (Methyl-CpG Binding Domain Protein 1) Antibody



SDS-PAGE Analysis Purified MBD1 Mouse Monoclonal Antibody (CPTC-MBD1-1). Confirmation of Purity and Integrity of Antibody.



Formalin-fixed, paraffin-embedded human colon stained with Methyl-CpG Binding Domain Protein 1 Mouse Monoclonal Antibody (CPTC-MBD1-1)

Specificity & Comments

DNA methylation is the major modification of eukaryotic genomes and plays an essential role in mammalian development. Human proteins MECP2, MBD1, MBD2, MBD3, and MBD4 comprise a family of nuclear proteins related by the presence in each of a methyl-CpG binding domain (MBD). Each of these proteins, with the exception of MBD3, is capable of binding specifically to methylated DNA. MECP2, MBD1 and MBD2 can also repress transcription from methylated gene promoters. MBD1 has also been predicted to be involved in the development and progression of tumors, and it has been shown that MBD1 is significantly upregulated in pancreatic cancer tissues when compared with surrounding normal tissues. Furthermore, MBD1 may serve as a potential therapeutic target for pancreatic cancer.

2 Union Square, Union City, CA 94587, Tel: 1-866-2-NEOBIO (1-866-263-6246) —
orders@NeoBiotechnologies.com, www.NeoBiotechnologies.com

Supplied As

200ug/ml of Ab Purified from Bioreactor Concentrate by Protein A/G. Prepared in 10mM PBS with 0.05% BSA & 0.05% azide. Also available WITHOUT BSA & azide at 1.0mg/ml.

Storage and Stability

Antibody with azide - store at 2 to 8°C. Antibody without azide - store at -20 to -80°C. Antibody is stable for 24 months. Non-hazardous. No MSDS required.

Research Areas

Nuclear Marker

Limitations and Warranty

This antibody is available for research use only and is not approved for use in diagnosis. There are no warranties, expressed or implied, which extend beyond this description. Company is not liable for any personal injury or economic loss resulting from this product.
