

MCAM (Melanoma Cell Adhesion Molecule) / MUC18 / CD146 Antibody

Mouse Monoclonal Antibody [Clone MUC18/1130]

Catalog No	Format	Size
4162-MSM4-P0	Purified Ab with BSA and Azide at 200ug/ml	20 ug
4162-MSM4-P1	Purified Ab with BSA and Azide at 200ug/ml	100 ug
4162-MSM4-P1ABX	Purified Ab WITHOUT BSA and Azide at 1.0mg/ml	100 ug

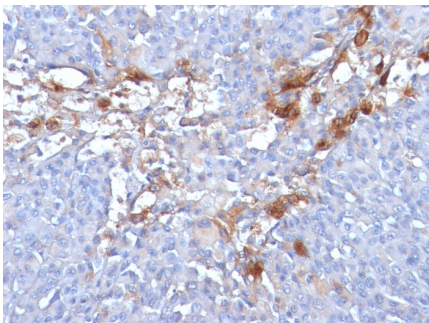
Applications	Tested Dillution	Note
Flow Cytometry (Flow)	1-2ug/million cells	
Immunofluorescence (IF)	1-3ug/ml	
Immunohistochemistry (IHC)	1-2ug/ml	30 min at RT. Staining of formalin-fixed tissues requires heating tissue sections in 10mM Tris with 1mM EDTA, pH 9.0, for 45 min at 95°C followed by cooling at RT for 20 minutes

Product Details

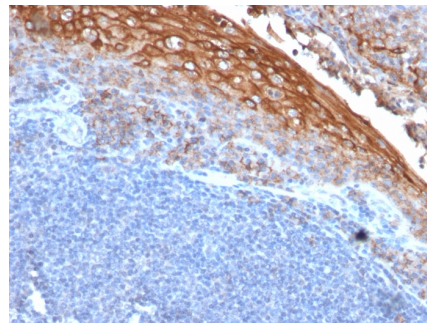
Clone	MUC18/1130
Gene Name	MCAM
Immunogen	Recombinant full-length human MUC18 protein
Host	Mouse
Clonality	Monoclonal
Isotype / Light Chain	IgG1 / Kappa
Mol. Weight of Antigen	130kDa
Cellular Localization	Membrane
Species Reactivity	Human
Positive Control	A-375, HUV-EC or HeLa cells. Tonsil or Melanoma (IHC).

*Optimal dilution for a specific application should be determined.

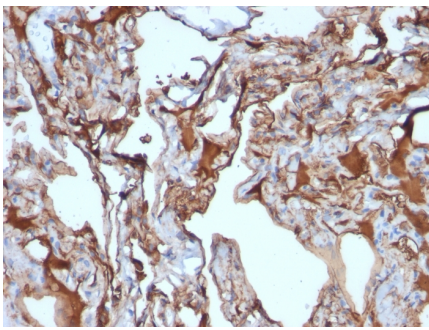
Product Images for MCAM (Melanoma Cell Adhesion Molecule) / MUC18 / CD146 Antibody



Formalin-fixed, paraffin-embedded human Melanoma stained with MUC18 Mouse Monoclonal Antibody (MUC18/1130).



Formalin-fixed, paraffin-embedded human Tonsil stained with MUC18 Mouse Monoclonal Antibody (MUC18/1130).



Formalin-fixed, paraffin-embedded human Melanoma stained with MUC18 Mouse Monoclonal Antibody (MUC18/1130).

Specificity & Comments

The human Mel-CAM gene maps to chromosome 11q23 and encodes a trans-membrane glycoprotein, also designated MCAM, MUC 18 or CD146, that belongs to the immunoglobulin superfamily and functions as a Ca²⁺-independent cell adhesion molecule. Mel-CAM expression is restricted to advanced primary and metastatic melanomas and to cell lines of the neuroectodermal lineage, but not normal melanocytes. Mel-CAM is found on 80% of advanced primary human melanomas and correlates well with development of metastatic disease.

Limitations and Warranty

This antibody is available for research use only and is not approved for use in diagnosis. There are no warranties, expressed or implied, which extend beyond this description. Company is not liable for any personal injury or economic loss resulting from this product.

Supplied As

200ug/ml of Ab Purified from Bioreactor Concentrate by Protein A/G. Prepared in 10mM PBS with 0.05% BSA & 0.05% azide. Also available WITHOUT BSA & azide at 1.0mg/ml.

Storage and Stability

Antibody with azide - store at 2 to 8°C. Antibody without azide - store at -20 to -80°C. Antibody is stable for 24 months. Non-hazardous. No MSDS required.

Research Areas

Endothelial Cell Marker, Mesenchymal Stem Cell Differentiation, Signal Transduction
