

Recombinant MCM7 (Proliferation Marker) Antibody

Rabbit Monoclonal Antibody [Clone MCM7/2832R]

Catalog No	Format	Size
4176-RBM7-P0	Purified Ab with BSA and Azide at 200ug/ml	20 ug
4176-RBM7-P1	Purified Ab with BSA and Azide at 200ug/ml	100 ug
4176-RBM7-P1ABX	Purified Ab WITHOUT BSA and Azide at 1.0mg/ml	100 ug

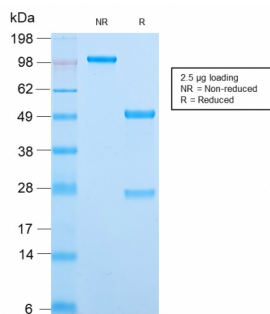
Applications	Tested Dillution	Note
Immunohistochemistry (IHC)	1-2ug/ml	30 min at RT. Staining of formalin-fixed tissues requires heating tissue sections in 10mM Tris with 1mM EDTA, pH 9.0, for 45 min at 95°C followed by cooling at RT for 20 minutes
Western Blot (WB)	2-4ug/ml	

Product Details

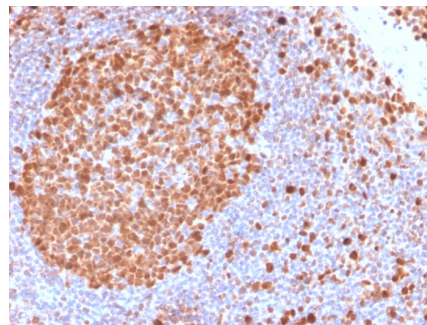
Clone	MCM7/2832R
Gene Name	MCM7
Immunogen	Recombinant human MCM7 protein fragment (aa195-319)
Host	Rabbit
Clonality	Monoclonal
Isotype / Light Chain	IgG / Kappa
Mol. Weight of Antigen	88kDa
Cellular Localization	Chromosome, Nucleus
Species Reactivity	Human
Positive Control	A-431, A549, HEK-293, HeP2, MCF-7, Raji or Ramos cells. Tonsil., SKBR3

*Optimal dilution for a specific application should be determined.

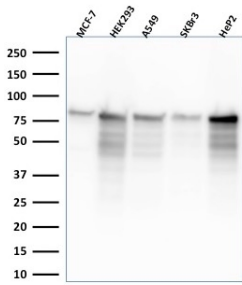
Product Images for Recombinant MCM7 (Proliferation Marker) Antibody



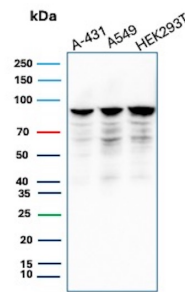
SDS-PAGE Analysis Purified MCM7 Rabbit Recombinant Monoclonal Antibody (MCM7/2832R). Confirmation of Purity and Integrity of Antibody.



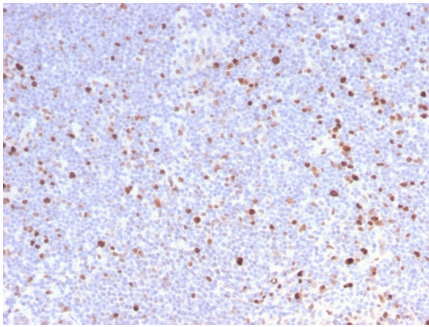
Formalin-fixed, paraffin-embedded human Tonsil stained with MCM7 Rabbit Recombinant Monoclonal Antibody (MCM7/2832R).



Western Blot Analysis of MCF-7, HEK-293, A549, SKBr3, HeP2 lysate using MCM7 Mouse Monoclonal Antibody (MCM7/2832R).



Western Blot Analysis of A-431, A549 and HEK293T lysates using MCM7 Rabbit Recombinant Monoclonal Antibody (MCM7/2832R).



Formalin-fixed, paraffin-embedded human Lymph Node stained with MCM7 Rabbit Recombinant Monoclonal Antibody (MCM7/2832R).

Specificity & Comments

MCM7 is one of the highly conserved mini-chromosome maintenance proteins (MCM) that is essential for the initiation of eukaryotic genome replication. The hexameric protein complex formed by the MCM proteins is a key component of the pre-replication complex and may be involved in the formation of replication forks and in the recruitment of other DNA replication related proteins. The MCM complex consisting of this protein and MCM2, 4 and 6 proteins possesses DNA helicase activity, and may act as a DNA unwinding enzyme. Cyclin D1-dependent kinase, CDK4, is found to associate with this protein, and may regulate the binding of this protein with the tumor suppressor protein RB1/RB.

Limitations and Warranty

This antibody is available for research use only and is not approved for use in diagnosis. There are no warranties, expressed or implied, which extend beyond this description. Company is not liable for any personal injury or economic loss resulting from this product.

Supplied As

200ug/ml of Ab Purified from Bioreactor Concentrate by Protein A/G. Prepared in 10mM PBS with 0.05% BSA & 0.05% azide. Also available WITHOUT BSA & azide at 1.0mg/ml.

Storage and Stability

Antibody with azide - store at 2 to 8°C. Antibody without azide - store at -20 to -80°C. Antibody is stable for 24 months. Non-hazardous. No MSDS required.