

Malate dehydrogenase 1 NAD (soluble) Antibody

Mouse Monoclonal Antibody [Clone CPTC-MDH1-1]

Catalog No	Format	Size
4190-MSM1-P0	Purified Ab with BSA and Azide at 200ug/ml	20 ug
4190-MSM1-P1	Purified Ab with BSA and Azide at 200ug/ml	100 ug
4190-MSM1-P1ABX	Purified Ab WITHOUT BSA and Azide at 1.0mg/ml	100 ug

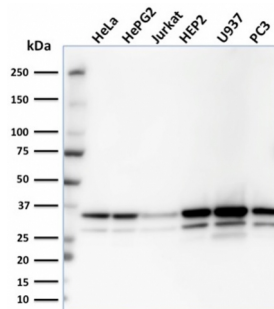
Applications	Tested Dillution	Note
Western Blot (WB)	2-4ug/ml	

Product Details

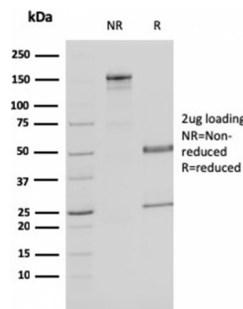
Clone	CPTC-MDH1-1
Gene Name	MDH1
Immunogen	Recombinant human full-length MDH1 protein
Host	Mouse
Clonality	Monoclonal
Isotype / Light Chain	IgG2a / Kappa
Mol. Weight of Antigen	36kDa
Cellular Localization	Cytoplasm
Species Reactivity	Human
Positive Control	Jurkat or HeLa cell lysates.

*Optimal dilution for a specific application should be determined.

Product Images for Malate dehydrogenase 1 NAD (soluble) Antibody



Western Blot Analysis of HeLa, HepG2, Jurkat, HEP2, U937, PC3 cell lysates using MDH1 Mouse Monoclonal Antibody (CPTC-MDH1-1).



SDS-PAGE Analysis of Purified MDH1 Mouse Monoclonal Antibody (CPTC-MDH1-1). Confirmation of Purity and Integrity of Antibody.

Specificity & Comments

Malate dehydrogenase catalyzes the reversible oxidation of malate to oxaloacetate, utilizing the NAD/NADH cofactor system in the citric acid cycle. The protein encoded by this gene is localized to the cytoplasm and may play pivotal roles in the malate-aspartate shuttle that operates in the metabolic coordination between cytosol and mitochondria. Alternatively spliced transcript variants encoding distinct isoforms have been found for this gene.

Supplied As

200ug/ml of Ab Purified from Bioreactor Concentrate by Protein A/G. Prepared in 10mM PBS with 0.05% BSA & 0.05% azide. Also available WITHOUT BSA & azide at 1.0mg/ml.

Storage and Stability

Antibody with azide - store at 2 to 8°C. Antibody without azide - store at -20 to -80°C. Antibody is stable for 24 months. Non-hazardous. No MSDS required.

Limitations and Warranty

This antibody is available for research use only and is not approved for use in diagnosis. There are no warranties, expressed or implied, which extend beyond this description. Company is not liable for any personal injury or economic loss resulting from this product.