

## Recombinant MDM2 Antibody

Rabbit Monoclonal Antibody [Clone MDM2/7061R]

Catalog No	Format	Size
4193-RBM7-P0	Purified Ab with BSA and Azide at 200ug/ml	20 ug
4193-RBM7-P1	Purified Ab with BSA and Azide at 200ug/ml	100 ug
4193-RBM7-P1ABX	Purified Ab WITHOUT BSA and Azide at 1.0mg/ml	100 ug

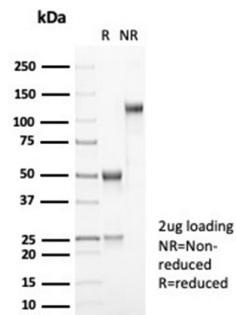
Applications	Tested Dillution	Note
--------------	------------------	------

### Product Details

<b>Clone</b>	MDM2/7061R
<b>Gene Name</b>	MDM2
<b>Immunogen</b>	Recombinant human MDM2 protein fragment (around aa 126-254) (exact sequence is proprietary)
<b>Host</b>	Rabbit
<b>Clonality</b>	Monoclonal
<b>Isotype / Light Chain</b>	IgG / Kappa
<b>Mol. Weight of Antigen</b>	~90kDa
<b>Cellular Localization</b>	Cytoplasm, Nucleolus, Nucleoplasm, Nucleus
<b>Species Reactivity</b>	Human
<b>Positive Control</b>	A549 or HeLa cells. Human pancreas.

\*Optimal dilution for a specific application should be determined.

### Product Images for Recombinant MDM2 Antibody



SDS-PAGE Analysis of Purified MDM2 Recombinant Rabbit Monoclonal Antibody (MDM2/7061R). Confirmation of Purity and Integrity of Antibody.

### Specificity & Comments

MDM2 is a nuclear phosphoprotein that binds and inhibits transactivation by tumor protein p53. It can promote tumor formation by targeting tumor suppressor proteins, such as p53, for proteasomal degradation. Overexpression of MDM2 can result in excessive inactivation of tumor protein p53, diminishing its tumor suppressor function. This protein also affects the cell cycle, apoptosis, and tumorigenesis through interactions with other proteins, including retinoblastoma 1 and ribosomal protein L5. Overexpression of MDM2 protein is detected in a variety of cancers.

### Limitations and Warranty

This antibody is available for research use only and is not approved for use in diagnosis. There are no warranties, expressed or implied, which extend beyond this description. Company is not liable for any personal injury or economic loss resulting from this product.

### Supplied As

200ug/ml of Ab purified from Bioreactor Concentrate by Protein A/G. Prepared in 10mM PBS with 0.05% BSA & 0.05% azide. Also available WITHOUT BSA & azide at 1.0mg/ml.

### Storage and Stability

Antibody with azide - store at 2 to 8 °C. Antibody without azide - store at -20 to -80 °C. Antibody is stable for 24 months. Non-hazardous. No MSDS required.

### Research Areas

AKT Signaling, Bladder Cancer, Cardiovascular, Infectious Disease, Nuclear Marker, Signal Transduction, Transcription Factors