

## Milk Fat Globule (Breast Epithelial Marker) Antibody

Mouse Monoclonal Antibody [Clone SPM291]

Catalog No	Format	Size
4240-MSM1X-P0	Purified Ab with BSA and Azide at 200ug/ml	20 ug
4240-MSM1X-P1	Purified Ab with BSA and Azide at 200ug/ml	100 ug
4240-MSM1X-P1ABX	Purified Ab WITHOUT BSA and Azide at 1.0mg/ml	100 ug

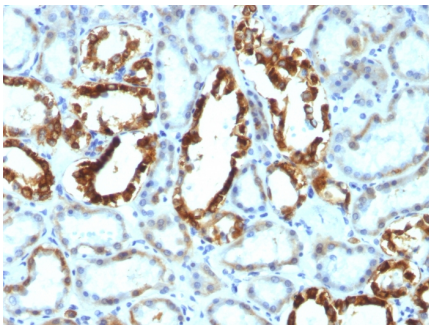
Applications	Tested Dillution	Note
Immunohistochemistry (IHC)	1-2ug/ml	30 min at RT. Staining of formalin-fixed tissues requires heating tissue sections in 10mM Tris with 1mM EDTA, pH 9.0, for 45 min at 95°C followed by cooling at RT for 20 minutes

### Product Details

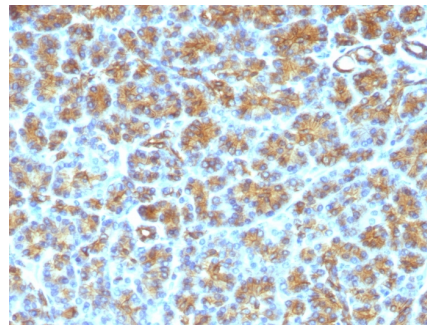
Clone	SPM291
Gene Name	MFGE8
Immunogen	Human milk fat globule membrane preparation
Host	Mouse
Clonality	Monoclonal
Isotype / Light Chain	IgG1 / Kappa
Mol. Weight of Antigen	45kDa
Cellular Localization	Acrosome membrane, Cytoplasmic vesicle, Membrane, Secreted, Secretory vesicle
Species Reactivity	Human
Positive Control	Normal breast or breast carcinoma.

*\*Optimal dilution for a specific application should be determined.*

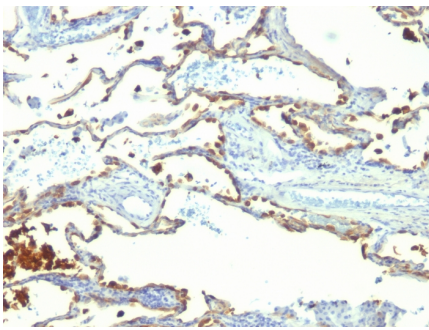
### Product Images for Milk Fat Globule (Breast Epithelial Marker) Antibody



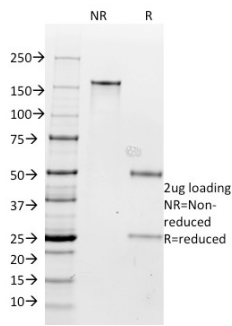
Formalin-fixed, paraffin-embedded human Renal Cell Carcinoma stained with Milk Fat Globule Monoclonal Antibody (SPM291).



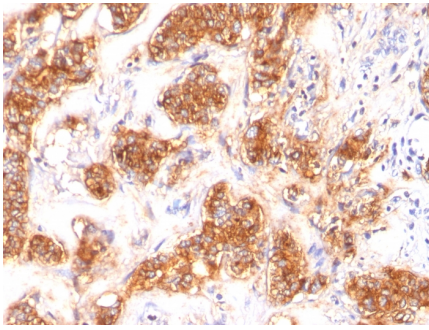
Formalin-fixed, paraffin-embedded human Pancreas stained with Milk Fat Globule Monoclonal Antibody (SPM291)



Formalin-fixed, paraffin-embedded human Lung Carcinoma stained with Milk Fat Globule Monoclonal Antibody (SPM291)



SDS-PAGE Analysis Purified Milk Fat Globule Monoclonal Antibody (SPM291). Confirmation of Integrity and Purity of Antibody



Formalin-fixed, paraffin-embedded human Breast Carcinoma stained with Milk Fat Globule Monoclonal Antibody (SPM291)

### Specificity & Comments

Recognizes a protein of 40-45kDa, identified as human milk fat globule membrane protein (HMFG). HMFG is present on normal human breast epithelial cells and cell lines derived from breast carcinomas, as well as to the outer surface of the human milk fat globule. HMFG is considered as a differentiation marker. It is useful as specific breast epithelial marker and can also provide a tool to study the role of the cell surface in normal and neoplastic mammary development.

### Supplied As

200ug/ml of Ab Purified from Bioreactor Concentrate by Protein A/G. Prepared in 10mM PBS with 0.05% BSA & 0.05% azide. Also available WITHOUT BSA & azide at 1.0mg/ml.

### Storage and Stability

Antibody with azide - store at 2 to 8°C. Antibody without azide - store at -20 to -80°C. Antibody is stable for 24 months. Non-hazardous. No MSDS required.

### Research Areas

Complement System, Mast Cell Marker

### Limitations and Warranty

This antibody is available for research use only and is not approved for use in diagnosis. There are no warranties, expressed or implied, which extend beyond this description. Company is not liable for any personal injury or economic loss resulting from this product.