

Recombinant Mammaglobin (SCGB2A2) (Breast Cancer Marker) Antibody

Mouse Monoclonal Antibody [Clone rMGB/6619]

| Catalog No | Format | Size |
|------------------|---|--------|
| 4250-MSM14-P0 | Purified Ab with BSA and Azide at 200ug/ml | 20 ug |
| 4250-MSM14-P1 | Purified Ab with BSA and Azide at 200ug/ml | 100 ug |
| 4250-MSM14-P1ABX | Purified Ab WITHOUT BSA and Azide at 1.0mg/ml | 100 ug |

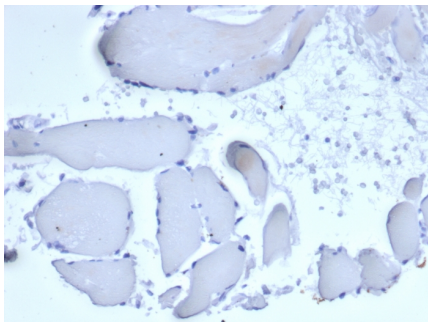
| Applications | Tested Dillution | Note |
|----------------------------|------------------|---|
| Immunohistochemistry (IHC) | 1-2ug/ml | 30 min at RT. Staining of formalin-fixed tissues requires heating tissue sections in 10mM Tris with 1mM EDTA, pH 9.0, for 45 min at 95°C followed by cooling at RT for 20 minutes |

Product Details

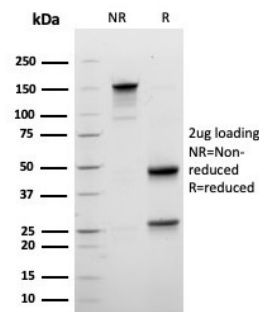
| | |
|-------------------------------|---|
| Clone | rMGB/6619 |
| Gene Name | SCGB2A2 |
| Immunogen | Recombinant full-length human Mammaglobin (SCGB2A2) protein |
| Host | Mouse |
| Clonality | Monoclonal |
| Isotype / Light Chain | IgG1 / Kappa |
| Mol. Weight of Antigen | 10.5kDa |
| Cellular Localization | Secreted |
| Species Reactivity | Human |
| Positive Control | HeLa, MCF-7 or T47D cells. Human breast carcinoma. |

*Optimal dilution for a specific application should be determined.

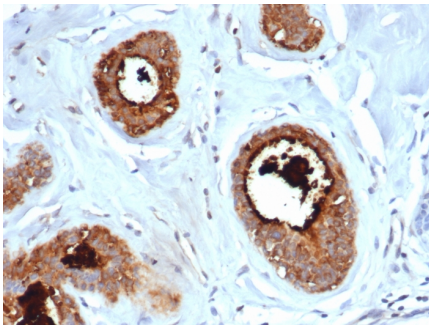
Product Images for Recombinant Mammaglobin (SCGB2A2) (Breast Cancer Marker) Antibody



IHC analysis of formalin-fixed, paraffin-embedded human skeletal muscle. Negative tissue control using rMGB/6619 at 2ug/ml in PBS for 30min RT. HIER: Tris/EDTA, pH9.0, 45min. 2°C: HRP-polymer, 30min. DAB, 5min.



SDS-PAGE Analysis of Purified Mammaglobin Recombinant Mouse Monoclonal (rMGB/6619). Confirmation of Purity and Integrity of Antibody.



Formalin-fixed, paraffin-embedded human lactating breast stained with Mammaglobin Recombinant Mouse Monoclonal Antibody (rMGB/6619).

Specificity & Comments

Mammaglobin, 10 kDa, is a cytoplasmic protein, a mammary-specific member of the uteroglobin family. It is related to a family of epithelial secretory proteins that includes prostatein and Clara cell protein. Mammaglobin occurs in about 80% of breast carcinomas. The extent is generally larger than that of GCDFP-15. Up to 15% of nonbreast carcinomas (such as stomach, lung, colon, hepatobiliary, thyroid, ovarian, and urothelial carcinomas) have been reported positive, usually only focally. Mammaglobin is a sensitive and fairly specific marker for breast carcinoma. The panel should also include Gross cystic disease fluid protein-15 and Estrogen receptor alpha.

Limitations and Warranty

This antibody is available for research use only and is not approved for use in diagnosis. There are no warranties, expressed or implied, which extend beyond this description. Company is not liable for any personal injury or economic loss resulting from this product.

Supplied As

200ug/ml of Ab purified from Bioreactor Concentrate by Protein A/G. Prepared in 10mM PBS with 0.05% BSA & 0.05% azide. Also available WITHOUT BSA & azide at 1.0mg/ml.

Storage and Stability

Antibody with azide - store at 2 to 8 °C. Antibody without azide - store at -20 to -80 °C. Antibody is stable for 24 months. Non-hazardous. No MSDS required.