

Recombinant Ki-67 (Proliferating Cell Marker) Antibody

Rabbit Monoclonal Antibody [Clone MKI67/4947R]

Catalog No	Format	Size
4288-RBM17-P0	Purified Ab with BSA and Azide at 200ug/ml	20 ug
4288-RBM17-P1	Purified Ab with BSA and Azide at 200ug/ml	100 ug
4288-RBM17-P1ABX	Purified Ab WITHOUT BSA and Azide at 1.0mg/ml	100 ug

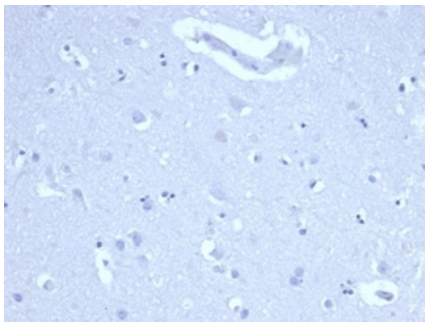
Applications	Tested Dillution	Note
Immunohistochemistry (IHC)	1-2ug/ml	30 min at RT. Staining of formalin-fixed tissues requires heating tissue sections in 10mM Tris with 1mM EDTA, pH 9.0, for 45 min at 95°C followed by cooling at RT for 20 minutes

Product Details

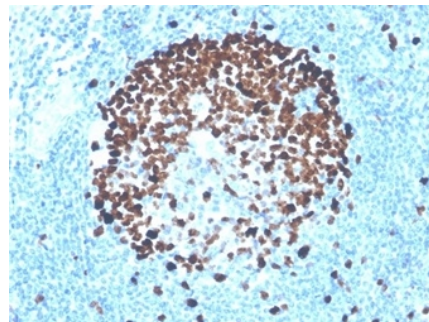
Clone	MKI67/4947R
Gene Name	MKI67
Immunogen	Recombinant fragment (around aa 2293-2478) of human Ki67 protein (exact sequence is proprietary)
Host	Rabbit
Clonality	Monoclonal
Isotype / Light Chain	IgG / Kappa
Mol. Weight of Antigen	345kDa and 395kDa
Cellular Localization	Chromosome, Nucleolus, Nucleus
Species Reactivity	Human
Positive Control	Any actively proliferating cells. Human skin, tonsil or lymph node.

*Optimal dilution for a specific application should be determined.

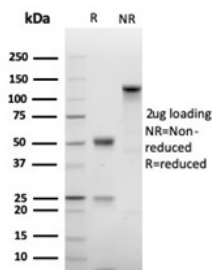
Product Images for Recombinant Ki-67 (Proliferating Cell Marker) Antibody



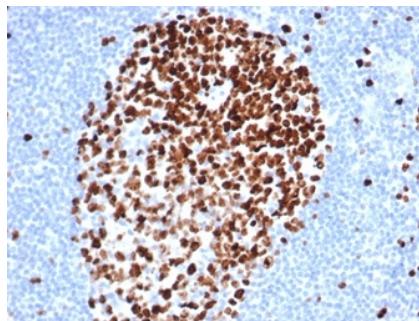
IHC analysis of formalin-fixed, paraffin-embedded human brain. Negative tissue control using MKI67/4947R at 2ug/ml in PBS for 30min RT. HIER: Tris/EDTA, pH9.0, 45min. 2°C: HRP-polymer, 30min. DAB, 5min.



Formalin-fixed, paraffin-embedded human tonsil stained with Ki67 Recombinant Rabbit Monoclonal Antibody (MKI67/4947R).



SDS-PAGE Analysis of Purified Ki67 Recombinant Rabbit Monoclonal Antibody (MKI67/4947R). Confirmation of Integrity and Purity of Antibody.



Formalin-fixed, paraffin-embedded human tonsil stained with Ki67 Recombinant Rabbit Monoclonal Antibody (MKI67/4947R).

Specificity & Comments

Ki-67 antigen is a nuclear, non-histone protein that is present in all stages of the cell cycle except G0. This characteristic makes Ki-67 an excellent marker for proliferating cells and is commonly used as one of the prognostic factors in cancer studies. A correlation has been demonstrated between Ki-67 index and the histo-pathological grade of neoplasms. Assessment of Ki-67 expression in renal and ureter tumors shows a correlation between tumor proliferation and disease progression, thus making it possible to differentiate high-risk patients. Ki-67 expression may also prove to be important for distinguishing between malignant and benign peripheral nerve sheath tumors. Ki-67 labeling index has been shown to be a prognostic marker in a number of neoplasms including grade II astrocytoma, oligodendroglioma, colon carcinoma, and breast carcinoma. In general, Ki-67 is a good marker of proliferating cell populations.

Limitations and Warranty

This antibody is available for research use only and is not approved for use in diagnosis. There are no warranties, expressed or implied, which extend beyond this description. Company is not liable for any personal injury or economic loss resulting from this product.

Supplied As

200ug/ml of Ab purified from Bioreactor Concentrate by Protein A/G. Prepared in 10mM PBS with 0.05% BSA & 0.05% azide. Also available WITHOUT BSA & azide at 1.0mg/ml.

Storage and Stability

Antibody with azide - store at 2 to 8 °C. Antibody without azide - store at -20 to -80 °C. Antibody is stable for 24 months. Non-hazardous. No MSDS required.

Research Areas

Neuroscience, Nuclear Marker