

MTF1 Antibody

Mouse Monoclonal Antibody [Clone MTF1/2649]

Catalog No	Format	Size
4520-MSM1-P0	Purified Ab with BSA and Azide at 200ug/ml	20 ug
4520-MSM1-P1	Purified Ab with BSA and Azide at 200ug/ml	100 ug
4520-MSM1-P1ABX	Purified Ab WITHOUT BSA and Azide at 1.0mg/ml	100 ug

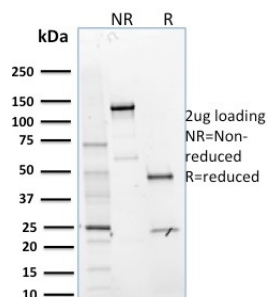
Applications	Tested Dillution	Note
Immunohistochemistry (IHC)	1-2ug/ml	30 min at RT. Staining of formalin-fixed tissues requires heating tissue sections in 10mM Tris with 1mM EDTA, pH 9.0, for 45 min at 95°C followed by cooling at RT for 20 minutes

Product Details

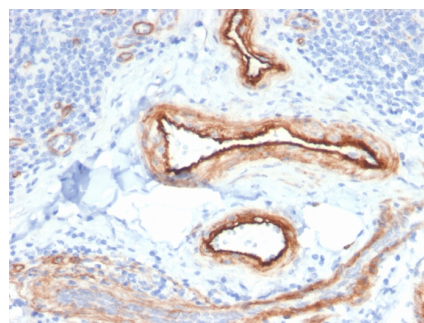
Clone	MTF1/2649
Gene Name	MTF1
Immunogen	Recombinant full-length human MTF1 protein
Host	Mouse
Clonality	Monoclonal
Isotype / Light Chain	IgG1 / Kappa
Mol. Weight of Antigen	70kDa
Cellular Localization	Cytoplasm, Nucleus
Species Reactivity	Human
Positive Control	Human kidney.

*Optimal dilution for a specific application should be determined.

Product Images for MTF1 Antibody



SDS-PAGE Analysis of Purified MTF1 Mouse Monoclonal Antibody (MTF1/2649). Confirmation of Purity and Integrity of Antibody.



Formalin-fixed, paraffin-embedded human Renal Cell Carcinoma stained with MTF1 Mouse Monoclonal Antibody (MTF1/2649).

Specificity & Comments

The metal-responsive element (MRE)-binding transcription factor (MTF-1) stimulates the expression of metallothioneins in response to the exposure of cells to heavy metals. MTF-1 contains six zinc fingers in the DNA binding domain. The phosphorylation of MTF-1 in response to metal exposure appears to play a significant role in the ability of MTF-1 to activate metallothionein transcription. In addition to its role in metallothionein activation, MTF-1 is involved in a post-transcription regulatory complex for ribosomal protein S25. MTF-1, La and p53 inhibit the nuclear export of S25 mRNA in response to nutrient deprivation. Furthermore, MTF-1 acts as a chromatin insulator on integrated transgenes in cultured cells to insulate active loci against chromatin silencing.

Supplied As

200ug/ml of Ab Purified from Bioreactor Concentrate by Protein A/G. Prepared in 10mM PBS with 0.05% BSA & 0.05% azide. Also available WITHOUT BSA & azide at 1.0mg/ml.

Storage and Stability

Antibody with azide - store at 2 to 8°C. Antibody without azide - store at -20 to -80°C. Antibody is stable for 24 months. Non-hazardous. No MSDS required.

Limitations and Warranty

This antibody is available for research use only and is not approved for use in diagnosis. There are no warranties, expressed or implied, which extend beyond this description. Company is not liable for any personal injury or economic loss resulting from this product.
