

MUC1 / CA15-3 / EMA / CD227 (Epithelial Marker) Antibody

Mouse Monoclonal Antibody [Clone VU-2G7]

| Catalog No | Format | Size |
|------------------|---|--------|
| 4582-MSM11-P0 | Purified Ab with BSA and Azide at 200ug/ml | 20 ug |
| 4582-MSM11-P1 | Purified Ab with BSA and Azide at 200ug/ml | 100 ug |
| 4582-MSM11-P1ABX | Purified Ab WITHOUT BSA and Azide at 1.0mg/ml | 100 ug |

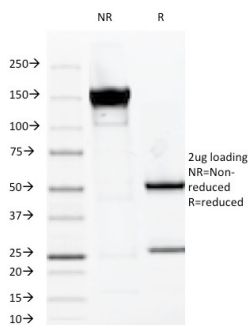
| Applications | Tested Dillution | Note |
|--------------|------------------|------|
|--------------|------------------|------|

Product Details

| | |
|-------------------------------|---|
| Clone | VU-2G7 |
| Gene Name | MUC1 |
| Immunogen | Synthetic glycosylated MUC1 60mer tandem repeat NH ₂ -(HGVTSAPDT(GalNAc)RPAPGSTAPPAHG) ₃ - COOH, conjugated to bovine serum albumin |
| Host | Mouse |
| Clonality | Monoclonal |
| Isotype / Light Chain | IgG1 / Kappa |
| Mol. Weight of Antigen | 265-400kDa |
| Cellular Localization | Apical cell membrane, Cell membrane, Cytoplasm, Nucleus, Secreted |
| Species Reactivity | Human |
| Positive Control | Colon, endometrial carcinoma., MCF-7 or MDA-231 cells. Breast, Ovarian |

*Optimal dilution for a specific application should be determined.

Product Images for MUC1 / CA15-3 / EMA / CD227 (Epithelial Marker) Antibody



SDS-PAGE Analysis of Purified MUC1 Mouse Monoclonal Antibody (VU-2G7). Confirmation of Integrity and Purity of Antibody.

Specificity & Comments

MAb VU-2G7 reacts with MUC1, a large transmembrane glycoprotein expressed on the ductal surface of normal glandular epithelia. The dominant epitope of VU-2G7 has not been established with 'epitope fingerprinting'. The extra cellular domain of MUC1 largely consists of a highly conserved, O-glycosylated 20 amino acids tandem repeat which can occur 30-100 times per molecule depending on the length of the allele involved. In the vast majority of human carcinomas this protein is up regulated and poorly glycosylated and appears on the cell surface in a non-polarized fashion.

Supplied As

200ug/ml of Ab Purified from Bioreactor Concentrate by Protein A/G. Prepared in 10mM PBS with 0.05% BSA & 0.05% azide. Also available WITHOUT BSA & azide at 1.0mg/ml.

Storage and Stability

Antibody with azide - store at 2 to 8°C. Antibody without azide - store at -20 to -80°C. Antibody is stable for 24 months. Non-hazardous. No MSDS required.

Research Areas

Cancer, Immunology, Cytokine Signaling, Infectious Disease

Limitations and Warranty

This antibody is available for research use only and is not approved for use in diagnosis. There are no warranties, expressed or implied, which extend beyond this description. Company is not liable for any personal injury or economic loss resulting from this product.