

MUC1 / CA15-3 / EMA / CD227 (Epithelial Marker) Antibody

Mouse Monoclonal Antibody [Clone MUC1/520]

Catalog No	Format	Size
4582-MSM18-P0	Purified Ab with BSA and Azide at 200ug/ml	20 ug
4582-MSM18-P1	Purified Ab with BSA and Azide at 200ug/ml	100 ug
4582-MSM18-P1ABX	Purified Ab WITHOUT BSA and Azide at 1.0mg/ml	100 ug

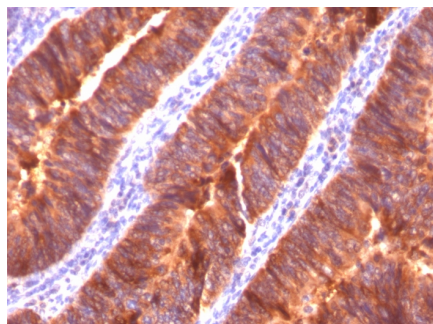
Applications	Tested Dillution	Note
Immunohistochemistry (IHC)	1-2ug/ml	30 min at RT. Staining of formalin-fixed tissues requires heating tissue sections in 10mM Tris with 1mM EDTA, pH 9.0, for 45 min at 95°C followed by cooling at RT for 20 minutes

Product Details

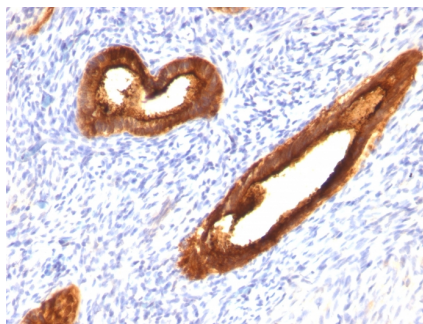
Clone	MUC1/520
Gene Name	MUC1
Immunogen	Human milk-fat globule membranes (HMFGM)
Host	Mouse
Clonality	Monoclonal
Isotype / Light Chain	IgG2a / Lambda
Mol. Weight of Antigen	265-400kDa
Cellular Localization	Apical cell membrane, Cell membrane, Cytoplasm, Nucleus, Secreted
Species Reactivity	Human
Positive Control	Colon, endometrial carcinoma., MCF-7 or MDA-231 cells. Breast, Ovarian

**Optimal dilution for a specific application should be determined.*

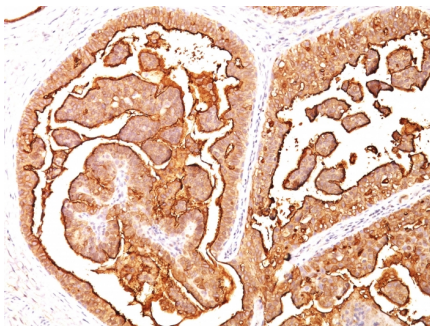
Product Images for MUC1 / CA15-3 / EMA / CD227 (Epithelial Marker) Antibody



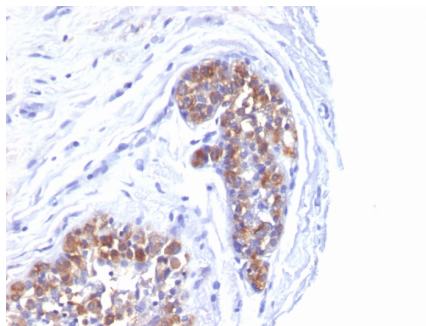
Formalin-fixed, paraffin-embedded human Colon Carcinoma stained with MUC-1 / CA15-3 / EMA Mouse Monoclonal Antibody (MUC1/520).



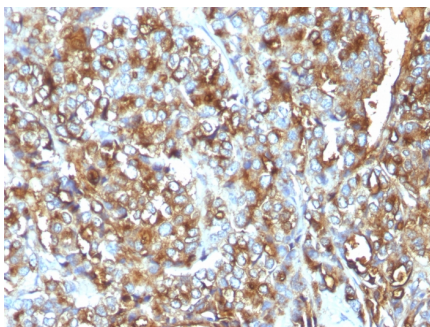
Formalin-fixed, paraffin-embedded human Endometrial Carcinoma stained with MUC-1 / CA15-3 / EMA Mouse Monoclonal Antibody (MUC1/520).



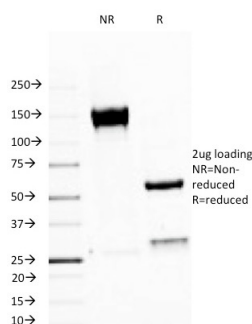
Formalin-fixed, paraffin-embedded human Breast Carcinoma stained with MUC-1 / EMA Mouse Monoclonal Antibody (MUC1/520)



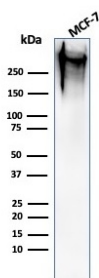
Formalin-fixed, paraffin-embedded human Breast Carcinoma stained with MUC-1 / EMA Mouse Monoclonal Antibody (MUC1/520).



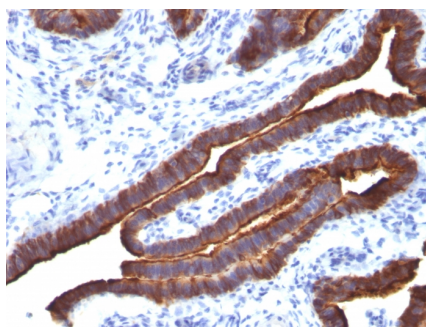
Formalin-fixed, paraffin-embedded human Breast Carcinoma stained with MUC-1 / EMA Mouse Monoclonal Antibody (MUC1/520).



SDS-PAGE Analysis Purified MUC-1 / EMA Mouse Monoclonal Antibody (MUC1/520). Confirmation of Integrity and Purity of Antibody



Western Blot Analysis of human MCF-7 cell lysate using MUC-1 / EMA Mouse Monoclonal Antibody (MUC1/520).



Formalin-fixed, paraffin-embedded human Ovarian Carcinoma stained with MUC-1 / CA15-3 / EMA Mouse Monoclonal Antibody (MUC1/520).

Specificity & Comments

In Western blotting, it recognizes proteins in MW range of 265-400kDa, identified as different glycoforms of EMA. EMA may provide a protective layer on epithelial cells against bacterial and enzyme attack. In immunohistochemical assays, it superbly stains routine formalin/paraffin carcinomas. Antibody to EMA is useful as a pan-epithelial marker for detecting early metastatic loci of carcinoma in bone marrow or liver.

Supplied As

200ug/ml of Ab purified from Bioreactor Concentrate by Protein A/G. Prepared in 10mM PBS with 0.05% BSA & 0.05% azide. Also available WITHOUT BSA & azide at 1.0mg/ml.

Storage and Stability

Antibody with azide - store at 2 to 8 °C. Antibody without azide - store at -20 to -80 °C. Antibody is stable for 24 months. Non-hazardous. No MSDS required.

Research Areas

Immunology, Cytokine Signaling, Infectious Disease

Limitations and Warranty

This antibody is available for research use only and is not approved for use in diagnosis. There are no warranties, expressed or implied, which extend beyond this description. Company is not liable for any personal injury or economic loss resulting from this product.