

## Recombinant MUC1 / CA15-3 / EMA / CD227 (Epithelial Marker) Antibody

Rabbit Monoclonal Antibody [Clone MUC1/1887R]

Catalog No	Format	Size
4582-RBM19-P0	Purified Ab with BSA and Azide at 200ug/ml	20 ug
4582-RBM19-P1	Purified Ab with BSA and Azide at 200ug/ml	100 ug
4582-RBM19-P1ABX	Purified Ab WITHOUT BSA and Azide at 1.0mg/ml	100 ug

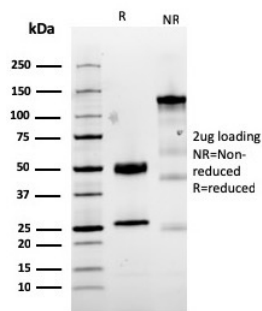
Applications	Tested Dillution	Note
Immunohistochemistry (IHC)	1-2ug/ml	30 min at RT. Staining of formalin-fixed tissues requires heating tissue sections in 10mM Tris with 1mM EDTA, pH 9.0, for 45 min at 95°C followed by cooling at RT for 20 minutes
Western Blot (WB)	2-4ug/ml	

### Product Details

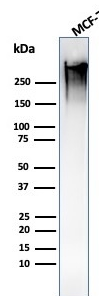
<b>Clone</b>	MUC1/1887R
<b>Gene Name</b>	MUC1
<b>Immunogen</b>	Recombinant human MUC1 protein
<b>Host</b>	Rabbit
<b>Clonality</b>	Monoclonal
<b>Isotype / Light Chain</b>	IgG / Kappa
<b>Mol. Weight of Antigen</b>	265-400kDa
<b>Cellular Localization</b>	Apical cell membrane, Cell membrane, Cytoplasm, Nucleus, Secreted
<b>Species Reactivity</b>	Human
<b>Positive Control</b>	Colon, MCF-7 or MDA-231 cells. Human breast, ovarian or endometrial carcinoma.

\*Optimal dilution for a specific application should be determined.

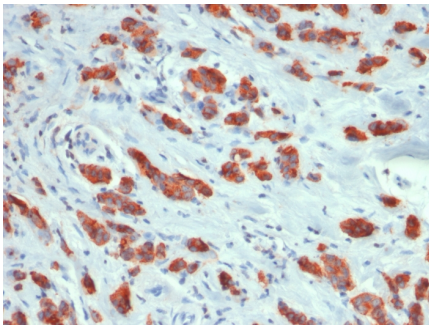
### Product Images for Recombinant MUC1 / CA15-3 / EMA / CD227 (Epithelial Marker) Antibody



SDS-PAGE Analysis of Purified MUC1 Rabbit Recombinant Monoclonal Antibody (MUC1/1887R). Confirmation of Purity and Integrity of Antibody.



Western Blot Analysis of MCF-7 cell lysate using MUC1 Rabbit Recombinant Monoclonal Antibody (MUC1/1887R).



Formalin-fixed, paraffin-embedded human breast carcinoma stained with MUC1 Rabbit Recombinant Monoclonal Antibody (MUC1/1887R).

---

### Specificity & Comments

This MAb reacts with MUC1, a large transmembrane glycoprotein expressed on the ductal surface of normal glandular epithelia. It is used as tracer agent in CA15.3 assays. The extracellular domain of MUC1 largely consists of a highly conserved, O-glycosylated 20 amino acids tandem repeat which can occur 30-100 times per molecule depending on the length of the allele involved. In the vast majority of human carcinomas this protein is up-regulated and poorly glycosylated and appears on the cell surface in a non-polarized fashion. The dominant epitope of this MAb involves both amino acids as well as sugar moieties. Its epitope is destroyed by desialylation i.e. treatment with Neuraminidase.

---

### Limitations and Warranty

This antibody is available for research use only and is not approved for use in diagnosis. There are no warranties, expressed or implied, which extend beyond this description. Company is not liable for any personal injury or economic loss resulting from this product.

---

### Supplied As

200ug/ml of recombinant MAb purified by Protein A/G. Prepared in 10mM PBS with 0.05% BSA & 0.05% azide. Also available WITHOUT BSA & azide at 1.0mg/ml.

---

### Storage and Stability

Antibody with azide - store at 2 to 8 °C. Antibody without azide - store at -20 to -80 °C. Antibody is stable for 24 months. Non-hazardous. No MSDS required.

---

### Research Areas

Cytokine Signaling, Immunology, Infectious Disease

---