

Recombinant MUC2 (Mucin 2) Antibody

Rabbit Monoclonal Antibody [Clone MLP/2970R]

Catalog No	Format	Size
4583-RBM3-P0	Purified Ab with BSA and Azide at 200ug/ml	20 ug
4583-RBM3-P1	Purified Ab with BSA and Azide at 200ug/ml	100 ug
4583-RBM3-P1ABX	Purified Ab WITHOUT BSA and Azide at 1.0mg/ml	100 ug

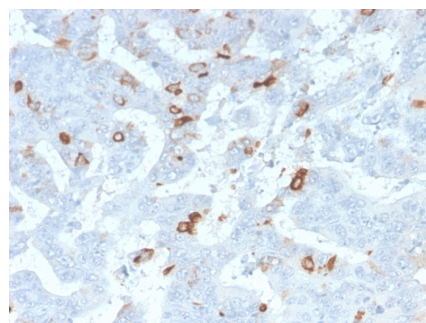
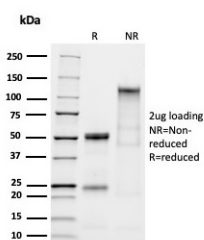
Applications	Tested Dillution	Note
Immunohistochemistry (IHC)	1-2ug/ml	30 min at RT. Staining of formalin-fixed tissues requires heating tissue sections in 10mM Tris with 1mM EDTA, pH 9.0, for 45 min at 95°C followed by cooling at RT for 20 minutes

Product Details

Clone	MLP/2970R
Gene Name	MUC2
Immunogen	Recombinant full-length human MUC2 protein (exact sequence is proprietary)
Host	Rabbit
Clonality	Monoclonal
Isotype / Light Chain	IgG / Kappa
Mol. Weight of Antigen	520kDa
Cellular Localization	Secreted
Species Reactivity	Human
Positive Control	LS174T cells. Human small intestine.

**Optimal dilution for a specific application should be determined.*

Product Images for Recombinant MUC2 (Mucin 2) Antibody



SDS-PAGE Analysis of Purified MUC2 Rabbit Recombinant Monoclonal Antibody (MLP/2970R). Confirmation of Purity and Integrity of Antibody.

Formalin-fixed, paraffin-embedded human colon stained with MUC2 Rabbit Recombinant Monoclonal Antibody (MLP/2970R).

Specificity & Comments

Recognizes a single glycoprotein of 520kDa, identified as mucin 2 (MUC2). This MAb shows no cross-reaction with human milk fat globule membranes, MUC1, or MUC3. Its epitope has been defined as GTQTP (GlyThrGlnThrPro). Mucins are high molecular weight glycoproteins, which constitute the major component of the mucus layer that protects the gastric epithelium. MUC2 is specifically expressed in goblet cells of the small intestine & colon; in about 65% of colonic carcinomas and about 40% of gastric carcinomas. MUC2 is rarely expressed outside of the GI tract with the exceptions of mucinous carcinoma of breast and clear cell-type carcinomas of the ovary.

Supplied As

200ug/ml of Ab purified from Bioreactor Concentrate by Protein A/G. Prepared in 10mM PBS with 0.05% BSA & 0.05% azide. Also available WITHOUT BSA & azide at 1.0mg/ml.

Storage and Stability

Antibody with azide - store at 2 to 8 °C. Antibody without azide - store at -20 to -80 °C. Antibody is stable for 24 months. Non-hazardous. No MSDS required.

Research Areas

Cardiovascular

Limitations and Warranty

This antibody is available for research use only and is not approved for use in diagnosis. There are no warranties, expressed or implied, which extend beyond this description. Company is not liable for any personal injury or economic loss resulting from this product.
