

Recombinant MUC3 (Mucin 3) Antibody

Rabbit Monoclonal Antibody [Clone MUC3/2992R]

Catalog No	Format	Size
4584-RBM3-P0	Purified Ab with BSA and Azide at 200ug/ml	20 ug
4584-RBM3-P1	Purified Ab with BSA and Azide at 200ug/ml	100 ug
4584-RBM3-P1ABX	Purified Ab WITHOUT BSA and Azide at 1.0mg/ml	100 ug

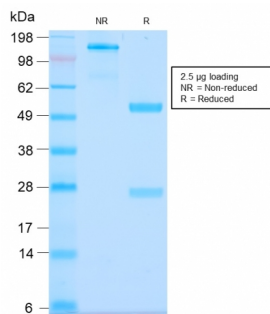
Applications	Tested Dillution	Note
Immunohistochemistry (IHC)	1-2ug/ml	30 min at RT. Staining of formalin-fixed tissues requires heating tissue sections in 10mM Tris with 1mM EDTA, pH 9.0, for 45 min at 95°C followed by cooling at RT for 20 minutes

Product Details

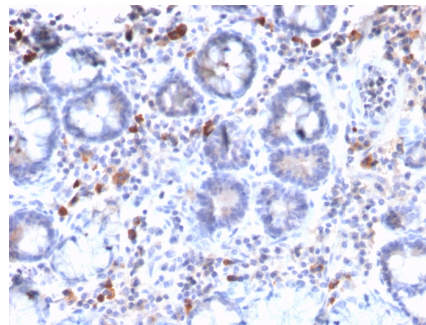
Clone	MUC3/2992R
Gene Name	MUC3A
Immunogen	A synthetic peptide of 35 amino acids, SIB35 (C-HSTPSFTSSITTTETTSHSTPSFTSSITTTETTS), which contains two of the MUC3 tandem repeats, coupled to KLH
Host	Rabbit
Clonality	Monoclonal
Isotype / Light Chain	IgG / Kappa
Mol. Weight of Antigen	1100kDa
Cellular Localization	Membrane, Secreted
Species Reactivity	Human
Positive Control	LS174T cells. Human small intestine (IHC).

*Optimal dilution for a specific application should be determined.

Product Images for Recombinant MUC3 (Mucin 3) Antibody



SDS-PAGE Analysis of Purified MUC3 Rabbit Recombinant Monoclonal Antibody (MUC3/2992R). Confirmation of Purity and Integrity of Antibody.



Formalin-fixed, paraffin-embedded human Gastric Carcinoma stained with MUC3 Rabbit Recombinant Monoclonal Antibody (MUC3/2992R).

Specificity & Comments

It recognizes a protein of HMW, identified as mucin 3 glycoprotein (MUC3). Its epitope localizes between aa SITTTE. This MAb shows no cross-reaction with human milk fat globule membranes, MUC1, or MUC2. MUC3 is distributed in colon and rectum, and is also present to a lesser extent in breast, lung and salivary gland tissues. The Mucins are a family of highly glycosylated, secreted proteins with a basic structure consisting of a variable number of tandem repeats (VNTRs) encoded by 60 base pairs (Mucin 1), 69 base pairs (Mucin 2) and 51 base pairs (Mucin 3). The number of repeats is highly polymorphic and varies among different alleles. Mucin 1 proteins are expressed as type I membrane proteins in addition to secreted forms. Mucin 1 is aberrantly expressed in epithelial tumors including breast carcinomas. Mucin 2 coats the epithelia of the intestines and airways and is associated with colonic tumors. Mucin 3 is a major component of various mucus gels and is broadly expressed in normal and tumor cells.

Limitations and Warranty

This antibody is available for research use only and is not approved for use in diagnosis. There are no warranties, expressed or implied, which extend beyond this description. Company is not liable for any personal injury or economic loss resulting from this product.

Supplied As

200ug/ml of Ab Purified from Bioreactor Concentrate by Protein A/G. Prepared in 10mM PBS with 0.05% BSA & 0.05% azide. Also available WITHOUT BSA & azide at 1.0mg/ml.

Storage and Stability

Antibody with azide - store at 2 to 8°C. Antibody without azide - store at -20 to -80°C. Antibody is stable for 24 months. Non-hazardous. No MSDS required.

Research Areas

Immunology, Infectious Disease
