

## MUC5AC (Mucin 5AC / Gastric Mucin) Antibody

Mouse Monoclonal Antibody [Clone SPM297]

| Catalog No       | Format  | Size   |
|------------------|---|--------|
| 4586-MSM1X-P0    | Purified Ab with BSA and Azide at 200ug/ml    | 20 ug  |
| 4586-MSM1X-P1    | Purified Ab with BSA and Azide at 200ug/ml    | 100 ug |
| 4586-MSM1X-P1ABX | Purified Ab WITHOUT BSA and Azide at 1.0mg/ml | 100 ug |

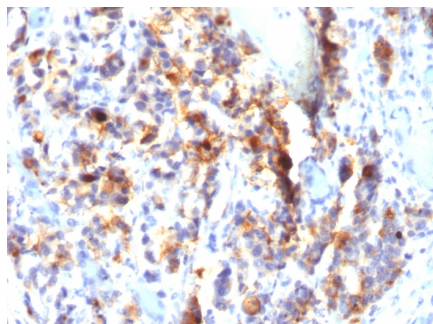
| Applications               | Tested Dillution    | Note  |
|----------------------------|---------------------|---|
| Flow Cytometry (Flow)      | 1-2ug/million cells |   |
| Immunofluorescence (IF)    | 1-3ug/ml            |   |
| Immunohistochemistry (IHC) | 1-2ug/ml            | 30 min at RT. Staining of formalin-fixed tissues requires heating tissue sections in 10mM Tris with 1mM EDTA, pH 9.0, for 45 min at 95°C followed by cooling at RT for 20 minutes |

### Product Details

|                               |   |
|-------------------------------|---|
| <b>Clone</b>                  | SPM297  |
| <b>Gene Name</b>              | MUC5AC  |
| <b>Immunogen</b>              | M1 mucin preparation from the fluid of an ovarian mucinous cyst belonging to an O Le(a-b) patient |
| <b>Host</b>                   | Mouse   |
| <b>Clonality</b>              | Monoclonal  |
| <b>Isotype / Light Chain</b>  | IgG1 / Kappa  |
| <b>Mol. Weight of Antigen</b> | >1 000kDa   |
| <b>Cellular Localization</b>  | Secreted  |
| <b>Species Reactivity</b>     | Cat, Chicken, Hedgehog, Human, Monkey, Mouse, Pig, Rabbit, Rat                                    |
| <b>Positive Control</b>       | Human colon or stomach (IHC).   |

\*Optimal dilution for a specific application should be determined.

### Product Images for MUC5AC (Mucin 5AC / Gastric Mucin) Antibody



Formalin-fixed, paraffin-embedded human Gastric Carcinoma stained with MUC5AC Monoclonal Antibody (SPM297).

### Specificity & Comments

This MAb recognizes the peptide core of gastric mucin M1 (1,000kDa) (recently identified as Mucin 5AC). Its epitope is destroyed by beta-mercaptoethanol and proteases but not by periodate treatment. Antibody to gastric mucin M1 reacts with the gastric epithelium of normal human gastrointestinal tract as well as with the precancerous and cancerous colon but not with normal adult colon. It also reacts with fetal colonic mucosa. Resurgence of gastric mucin reactivity during colonic carcinogenesis is due to re-expression of the peptide core of gastric (or fetal colonic) mucins.

### Supplied As

200ug/ml of Ab Purified from Bioreactor Concentrate by Protein A/G. Prepared in 10mM PBS with 0.05% BSA & 0.05% azide. Also available WITHOUT BSA & azide at 1.0mg/ml.

### Storage and Stability

Antibody with azide - store at 2 to 8°C. Antibody without azide - store at -20 to -80°C. Antibody is stable for 24 months. Non-hazardous. No MSDS required.

### Research Areas

Cardiovascular, Immunology, Infectious Disease

## Limitations and Warranty

This antibody is available for research use only and is not approved for use in diagnosis. There are no warranties, expressed or implied, which extend beyond this description. Company is not liable for any personal injury or economic loss resulting from this product.

---