

## MUC6 (Mucin 6 / Gastric Mucin) Antibody

Mouse Monoclonal Antibody [Clone CLH5]

| Catalog No      | Format  | Size   |
|-----------------|---|--------|
| 4588-MSM1-P0    | Purified Ab with BSA and Azide at 200ug/ml    | 20 ug  |
| 4588-MSM1-P1    | Purified Ab with BSA and Azide at 200ug/ml    | 100 ug |
| 4588-MSM1-P1ABX | Purified Ab WITHOUT BSA and Azide at 1.0mg/ml | 100 ug |

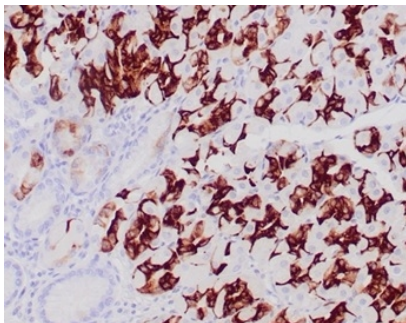
| Applications               | Tested Dillution    | Note  |
|----------------------------|---------------------|---|
| Flow Cytometry (Flow)      | 1-2ug/million cells |   |
| Immunofluorescence (IF)    | 1-3ug/ml            |   |
| Immunohistochemistry (IHC) | 1-2ug/ml            | 30 min at RT. Staining of formalin-fixed tissues requires heating tissue sections in 10mM Tris with 1mM EDTA, pH 9.0, for 45 min at 95°C followed by cooling at RT for 20 minutes |

### Product Details

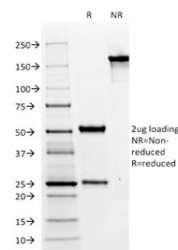
|                               |   |
|-------------------------------|---|
| <b>Clone</b>                  | CLH5  |
| <b>Gene Name</b>              | MUC6  |
| <b>Immunogen</b>              | A synthetic peptide of the Gastric Mucin 6 tandem repeat sequence |
| <b>Host</b>                   | Mouse   |
| <b>Clonality</b>              | Monoclonal  |
| <b>Isotype / Light Chain</b>  | IgG1 / Kappa  |
| <b>Mol. Weight of Antigen</b> | 252kDa  |
| <b>Cellular Localization</b>  | Secreted  |
| <b>Species Reactivity</b>     | Human   |
| <b>Positive Control</b>       | Human stomach.  |

\*Optimal dilution for a specific application should be determined.

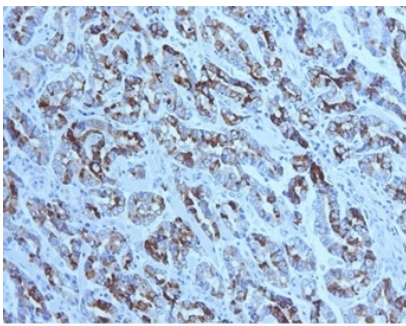
### Product Images for MUC6 (Mucin 6 / Gastric Mucin) Antibody



Formalin-fixed, paraffin-embedded human normal stomach. Strong cytoplasmic of glandular cells using MUC6 Mouse Monoclonal Antibody (CLH5). HIER: Tris/EDTA, pH9.0, 45min. 2°C: HRP-polymer, 30min. DAB, 5min.



SDS-PAGE Analysis of Purified MUC6 Mouse Monoclonal Antibody (CLH5). Confirmation of Integrity and Purity of Antibody



Formalin-fixed, paraffin-embedded human gastric carcinoma stained with MUC6 Mouse Monoclonal Antibody (CLH5). Courtesy of Dr. Leonor David, IPATIMUP and Medical Faculty, University of Porto, Portugal.

---

### Specificity & Comments

The MUC6 gastric mucin is a secreted glycoprotein that plays an essential role in epithelial cyto-protection from acid, proteases, pathogenic microorganisms, and mechanical trauma in the gastrointestinal tract. Mucin 6 expression is highest in the stomach and gall bladder, with lower expression in the terminal ileum and right colon. In gastric cancer, Mucin 6 has an altered expression. In normal stomach, Mucin 6 is associated with Lewis type 2; Mucin 6 is also expressed in gastric metaplasia, duodenum and pancreas. Mucin 6 is a secretory mucin, located in the deeper mucosal folds of human gall bladder, and its expression is altered with increasing degrees of inflammation.

---

### Limitations and Warranty

This antibody is available for research use only and is not approved for use in diagnosis. There are no warranties, expressed or implied, which extend beyond this description. Company is not liable for any personal injury or economic loss resulting from this product.

---

### Supplied As

200ug/ml of Ab purified from Bioreactor Concentrate by Protein A/G. Prepared in 10mM PBS with 0.05% BSA & 0.05% azide. Also available WITHOUT BSA & azide at 1.0mg/ml.

---

### Storage and Stability

Antibody with azide - store at 2 to 8 °C. Antibody without azide - store at -20 to -80 °C. Antibody is stable for 24 months. Non-hazardous. No MSDS required.

---

### Research Areas

Immunology, Infectious Disease

---