

Recombinant Langerin / CD207 (Marker of Langerhans Cells) Antibody

Mouse Monoclonal Antibody [Clone rLGRN/1821]

| Catalog No | Format | Size |
|------------------|---|--------|
| 50489-MSM5-P0 | Purified Ab with BSA and Azide at 200ug/ml | 20 ug |
| 50489-MSM5-P1 | Purified Ab with BSA and Azide at 200ug/ml | 100 ug |
| 50489-MSM5-P1ABX | Purified Ab WITHOUT BSA and Azide at 1.0mg/ml | 100 ug |

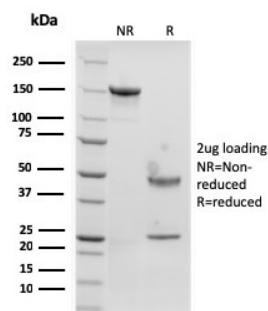
| Applications | Tested Dillution | Note |
|--------------|------------------|------|
|--------------|------------------|------|

Product Details

| | |
|-------------------------------|--|
| Clone | rLGRN/1821 |
| Gene Name | CD207 |
| Immunogen | Recombinant fragment (around aa74-213) of human Langerin protein (exact sequence is proprietary) |
| Host | Mouse |
| Clonality | Monoclonal |
| Isotype / Light Chain | IgG1 / Kappa |
| Mol. Weight of Antigen | 48kDa |
| Cellular Localization | Membrane |
| Species Reactivity | Human |
| Positive Control | HeLa or A549 cells (WB). |

*Optimal dilution for a specific application should be determined.

Product Images for Recombinant Langerin / CD207 (Marker of Langerhans Cells) Antibody



SDS-PAGE Analysis of Purified Langerin Recombinant Mouse Monoclonal Antibody (rLGRN/1821). Confirmation of Integrity and Purity of Antibody.

Specificity & Comments

Langerhans cells (LCs) are a subset of immature dendritic cells (DCs) that specifically localize in the epidermis and other mucosal epithelia. Epidermal LCs possess strong immuno-stimulatory capacity and play a central role in the initiation and regulation of immune responses. Langerin (CD207) is a Ca²⁺-dependent, C-type lectin domain containing, type II transmembrane protein that induces epidermal LCs to differentiate into Birbeck granules (BG). BGs are organelles with superimposing and zippering membranes that influence proper class I type antigen presentation to the circulating T cells. Human spleen, lymph node, thymus, liver, lung and heart express Langerin protein.

Limitations and Warranty

This antibody is available for research use only and is not approved for use in diagnosis. There are no warranties, expressed or implied, which extend beyond this description. Company is not liable for any personal injury or economic loss resulting from this product.

Supplied As

200ug/ml of Ab Purified from Bioreactor Concentrate by Protein A/G. Prepared in 10mM PBS with 0.05% BSA & 0.05% azide. Also available WITHOUT BSA & azide at 1.0mg/ml.

Storage and Stability

Antibody with azide - store at 2 to 8°C. Antibody without azide - store at -20 to -80°C. Antibody is stable for 24 months. Non-hazardous. No MSDS required.

Research Areas

Immunology, Dendritic Cell Marker