

PBX2 / PRL (Transcription Factor) Antibody

Mouse Monoclonal Antibody [Clone PCR-PBX2-1C4]

Catalog No	Format	Size
5089-MSM2-P0	Purified Ab with BSA and Azide at 200ug/ml	20 ug
5089-MSM2-P1	Purified Ab with BSA and Azide at 200ug/ml	100 ug
5089-MSM2-P1ABX	Purified Ab WITHOUT BSA and Azide at 1.0mg/ml	100 ug

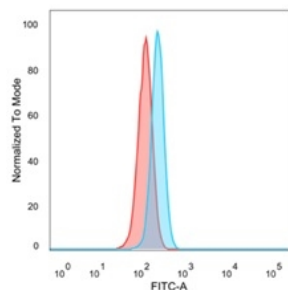
Applications	Tested Dilution	Note
Flow Cytometry (Flow)	1-2ug/million cells	
Immunofluorescence (IF)	1-3ug/ml	

Product Details

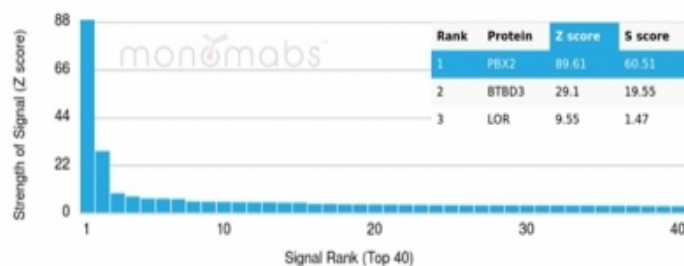
Clone	PCR-PBX2-1C4
Gene Name	PBX2
Immunogen	Recombinant full-length human PBX2 protein
Host	Mouse
Clonality	Monoclonal
Isotype / Light Chain	IgG2b
Mol. Weight of Antigen	46kDa
Cellular Localization	Nucleus
Species Reactivity	Human
Positive Control	HeLa cells. Expressed in all tissues except in cells of the B and T lineage.

*Optimal dilution for a specific application should be determined.

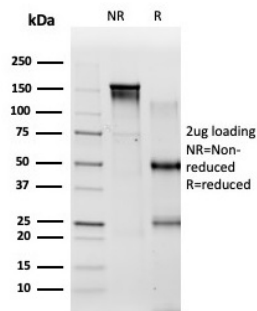
Product Images for PBX2 / PRL (Transcription Factor) Antibody



Flow cytometric analysis of PFA-fixed HeLa cells. PBX2 Mouse Monoclonal Antibody (PCR-PBX2-1C4) followed by goat anti-mouse IgG-CF488 (blue); isotype control (red).



Analysis of Protein Array containing more than 19,000 full-length human proteins using PBX2-Monospecific Mouse Monoclonal Antibody (PCR-PBX2-1C4). Z- and S- Score: The Z-score represents the strength of a signal that a monoclonal antibody (MAb) (in combination with a fluorescently-tagged anti-IgG secondary antibody) produces when binding to a particular protein on the HuProt™ array. Z-scores are described in units of standard deviations (SD's) above the mean value of all signals generated on that array. If targets on HuProt™ are arranged in descending order of the Z-score, the S-score is the difference (also in units of SD's) between the Z-score. S-score therefore represents the relative target specificity of a MAb to its intended target. A MAb is considered to be specific to its intended target, if the MAb has an S-score of at least 2.5. For example, if a MAb binds to protein X with a Z-score of 43 and to protein Y with a Z-score of 14, then the S-score for the binding of that MAb to protein X is equal to 29.



SDS-PAGE Analysis of Purified PBX2 Mouse Monoclonal Antibody (PCRP-PBX2-1C4). Confirmation of Integrity and Purity of Antibody.

Specificity & Comments

Pbx 1, 2, 3 and 4 are members of the TALE (three amino acid loop extension) family of homeodomain-containing proteins. Human pre-B cell acute leukemias are frequently associated with a t(1;19)(q23;p13.3) chromosomal rearrangement, which creates a chimeric gene encoding a fusion between the E2A and Pbx 1 gene products. Pbx 2 and Pbx 3 share 92% and 94% respective identities with Pbx 1 over a 266 amino acid region flanking their homeobox domains, while all three proteins are quite divergent at their amino- and carboxy-termini. Two forms of Pbx 1 and Pbx 3 each differ primarily in their carboxy-termini and result from alternative mRNA splicing. Unlike other homeotic selector genes which are expressed transiently during development and differentiation, Pbx gene transcripts are ubiquitously expressed in both fetal and adult tissues and cell lines. Additionally, Pbx 2 and Pbx 3 transcripts are detected in lymphoid cells, which do not express Pbx 1. Pbx 4 expression is confined to the testis, especially to spermatocytes in the pachytene stage of the first meiotic prophase.

Limitations and Warranty

This antibody is available for research use only and is not approved for use in diagnosis. There are no warranties, expressed or implied, which extend beyond this description. Company is not liable for any personal injury or economic loss resulting from this product.

Supplied As

200ug/ml of Ab purified from Bioreactor Concentrate by Protein A/G. Prepared in 10mM PBS with 0.05% BSA & 0.05% azide. Also available WITHOUT BSA & azide at 1.0mg/ml.

Storage and Stability

Antibody with azide - store at 2 to 8 °C. Antibody without azide - store at -20 to -80 °C. Antibody is stable for 24 months. Non-hazardous. No MSDS required.