

Recombinant Progesterone Receptor (Marker of Progestin Dependence) Antibody

Rabbit Monoclonal Antibody [Clone PGR/6854R]

Catalog No	Format	Size
5241-RBM12-P0	Purified Ab with BSA and Azide at 200ug/ml	20 ug
5241-RBM12-P1	Purified Ab with BSA and Azide at 200ug/ml	100 ug
5241-RBM12-P1ABX	Purified Ab WITHOUT BSA and Azide at 1.0mg/ml	100 ug

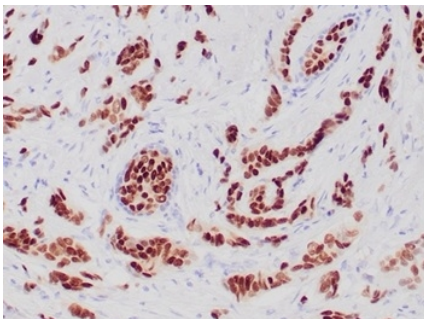
Applications	Tested Dillution	Note
Immunohistochemistry (IHC)	1-2ug/ml	30 min at RT. Staining of formalin-fixed tissues requires heating tissue sections in 10mM Tris with 1mM EDTA, pH 9.0, for 45 min at 95°C followed by cooling at RT for 20 minutes

Product Details

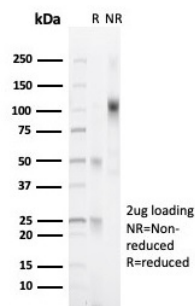
Clone	PGR/6854R
Gene Name	PGR
Immunogen	Recombinant fragment (around aa 1-200) of human PGR (exact sequence is proprietary)
Host	Rabbit
Clonality	Monoclonal
Isotype / Light Chain	IgG / Kappa
Mol. Weight of Antigen	PR-A (81kDa) and PR-B (116kDa).
Cellular Localization	Cytoplasm, Mitochondrion outer membrane, Nucleus
Species Reactivity	Horse, Human
Positive Control	Human breast carcinoma.

*Optimal dilution for a specific application should be determined.

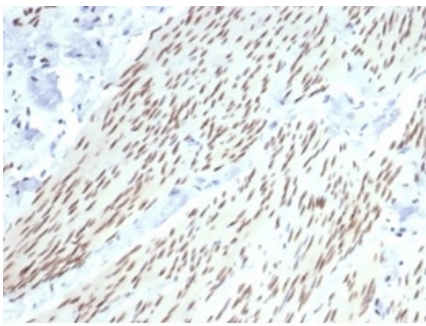
Product Images for Recombinant Progesterone Receptor (Marker of Progestin Dependence) Antibody



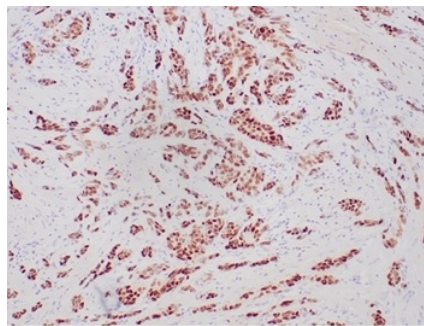
Formalin-fixed, paraffin-embedded human breast carcinoma stained with PR Recombinant Rabbit Monoclonal Antibody (PGR/6854R).



SDS-PAGE Analysis Purified PR Recombinant Rabbit Monoclonal (PGR/6854R). Confirmation of Integrity and Purity of Antibody.



Formalin-fixed, paraffin-embedded horse smooth muscle stained with PR Recombinant Rabbit Monoclonal Antibody (PGR/6854R).



Formalin-fixed, paraffin-embedded human breast carcinoma stained with PR Recombinant Rabbit Monoclonal Antibody (PGR/6854R).

Specificity & Comments

Progesterone is one of the central regulators of female reproduction. In breast development, progesterone is involved in the formation of lobular-alveolar structures and also affects differentiation in the breast by modulation of milk protein synthesis. The cellular effects of progesterone are mediated through progesterone receptors (PR). PR, a protein with 946 amino acids, is a ligand-activated transcription factor member of the steroid receptor super family of nuclear receptors. PR is predominantly expressed in female sex steroid responsive tissues such as the mammary gland, uterus and ovary but is also found in other tissues such as endocrine cells of the Langerhans' islets. The estrogen receptor (ER) and PR status has been used for over 20 years as a predictor of breast carcinoma responsiveness to endocrine therapy and as a prognostic indicator for early recurrence.

Limitations and Warranty

This antibody is available for research use only and is not approved for use in diagnosis. There are no warranties, expressed or implied, which extend beyond this description. Company is not liable for any personal injury or economic loss resulting from this product.

Supplied As

200ug/ml of Ab purified from Bioreactor Concentrate by Protein A/G. Prepared in 10mM PBS with 0.05% BSA & 0.05% azide. Also available WITHOUT BSA & azide at 1.0mg/ml.

Storage and Stability

Antibody with azide - store at 2 to 8 °C. Antibody without azide - store at -20 to -80 °C. Antibody is stable for 24 months. Non-hazardous. No MSDS required.

Research Areas

Breast Cancer, Cardiovascular, Signal Transduction, Transcription Factors