

PTEN (Tumor Suppressor Oncoprotein) Antibody

Mouse Monoclonal Antibody [Clone PTEN/2110]

Catalog No	Format	Size
5728-MSM1-P0	Purified Ab with BSA and Azide at 200ug/ml	20 ug
5728-MSM1-P1	Purified Ab with BSA and Azide at 200ug/ml	100 ug
5728-MSM1-P1ABX	Purified Ab WITHOUT BSA and Azide at 1.0mg/ml	100 ug

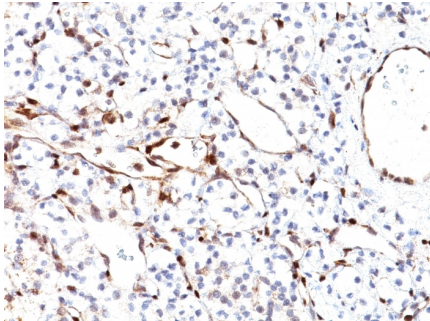
Applications	Tested Dillution	Note
Immunohistochemistry (IHC)	1-2ug/ml	30 min at RT. Staining of formalin-fixed tissues requires heating tissue sections in 10mM Tris with 1mM EDTA, pH 9.0, for 45 min at 95°C followed by cooling at RT for 20 minutes

Product Details

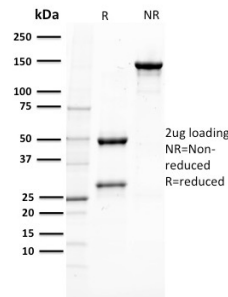
Clone	PTEN/2110
Gene Name	PTEN
Immunogen	Recombinant full-length human PTEN protein
Host	Mouse
Clonality	Monoclonal
Isotype / Light Chain	IgG2b / Kappa
Mol. Weight of Antigen	55kDa
Cellular Localization	Cytoplasm, Nucleus, PML body, Secreted
Species Reactivity	Human
Positive Control	Human prostate, breast or liver. MCF-7 or HeLa cells.

*Optimal dilution for a specific application should be determined.

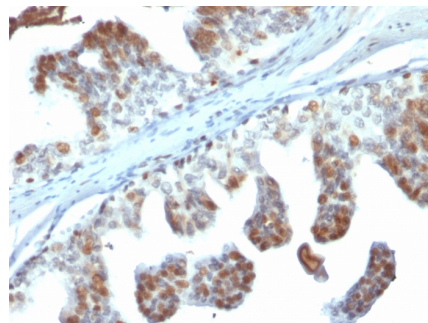
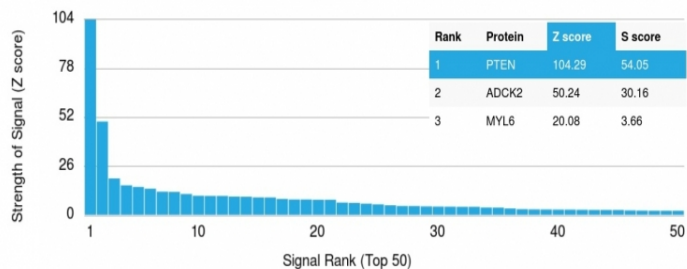
Product Images for PTEN (Tumor Suppressor Oncoprotein) Antibody



Formalin-fixed, paraffin-embedded human Renal Cell Carcinoma stained with PTEN Mouse Monoclonal Antibody (PTEN/2110).



SDS-PAGE Analysis of Purified PTEN Mouse Monoclonal Antibody (PTEN/2110). Confirmation of Purity and Integrity of Antibody.



Formalin-fixed, paraffin-embedded human Prostate Carcinoma stained with PTEN Mouse Monoclonal Antibody (PTEN/2110).

Analysis of Protein Array containing more than 19,000 full-length human proteins using PTEN Mouse Monoclonal Antibody (PTEN/2110). Z- and S- Score: The Z-score represents the strength of a signal that a monoclonal antibody (MAb) (in combination with a fluorescently-tagged anti-IgG secondary antibody) produces when binding to a particular protein on the HuProt™ array. Z-scores are described in units of standard deviations (SD's) above the mean value of all signals generated on that array. If targets on HuProt™ are arranged in descending order of the Z-score, the S-score is the difference (also in units of SD's) between the Z-score. S-score therefore represents the relative target specificity of a MAb to its intended target. A MAb is considered to be specific to its intended target, if the MAb has an S-score of at least 2.5. For example, if a MAb binds to protein X with a Z-score of 43 and to protein Y with a Z-score of 14, then the S-score for the binding of that MAb to protein X is equal to 29.

Specificity & Comments

PTEN (phosphatidylinositol-3,4,5-trisphosphate 3-phosphatase) contains a tensin like domain as well as a catalytic domain similar to that of the dual specificity protein tyrosine phosphatases. It was identified as a tumor suppressor that is mutated in a large number of cancers, including sporadic brain, breast, kidney, and prostate cancers.

Supplied As

200ug/ml of Ab Purified from Bioreactor Concentrate by Protein A/G. Prepared in 10mM PBS with 0.05% BSA & 0.05% azide. Also available WITHOUT BSA & azide at 1.0mg/ml.

Storage and Stability

Antibody with azide - store at 2 to 8°C. Antibody without azide - store at -20 to -80°C. Antibody is stable for 24 months. Non-hazardous. No MSDS required.

Limitations and Warranty

This antibody is available for research use only and is not approved for use in diagnosis. There are no warranties, expressed or implied, which extend beyond this description. Company is not liable for any personal injury or economic loss resulting from this product.