

## ATRX / RAD54 (Alpha Thalassemia Mental Retardation) Antibody

Mouse Monoclonal Antibody [Clone 39f]

Catalog No	Format	Size
546-MSM1-P0	Purified Ab with BSA and Azide at 200ug/ml	20 ug
546-MSM1-P1	Purified Ab with BSA and Azide at 200ug/ml	100 ug
546-MSM1-P1ABX	Purified Ab WITHOUT BSA and Azide at 1.0mg/ml	100 ug

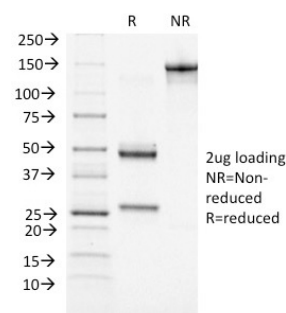
Applications	Tested Dillution	Note
Immunohistochemistry (IHC)	1-2ug/ml	30 min at RT. Staining of formalin-fixed tissues requires heating tissue sections in 10mM Tris with 1mM EDTA, pH 9.0, for 45 min at 95°C followed by cooling at RT for 20 minutes

### Product Details

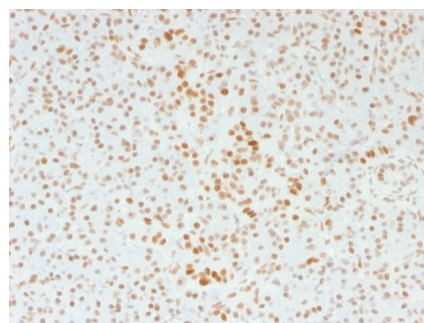
<b>Clone</b>	39f
<b>Gene Name</b>	ATRX
<b>Immunogen</b>	Recombinant full-length human ATRX protein
<b>Host</b>	Mouse
<b>Clonality</b>	Monoclonal
<b>Isotype / Light Chain</b>	IgG1 / Kappa
<b>Mol. Weight of Antigen</b>	280kDa
<b>Cellular Localization</b>	Chromosome, Nucleus, PML body, Telomere
<b>Species Reactivity</b>	Human
<b>Positive Control</b>	adrenal, HeLa or A431 cells. Pancreas, Kidney, ovary, prostate or stomach., Raji

\*Optimal dilution for a specific application should be determined.

### Product Images for ATRX / RAD54 (Alpha Thalassemia Mental Retardation) Antibody



SDS-PAGE Analysis of Purified ATRX Mouse Monoclonal Antibody (39f). Confirmation of Integrity and Purity of Antibody.



Formalin-fixed, paraffin-embedded human Pancreas stained with ATRX Mouse Monoclonal Antibody (39f).

### Specificity & Comments

ATRX is a member of the Snf2 family of helicase/ATPases, which contribute to the remodeling of the nucleosome structure in an ATP-dependent manner, and facilitate the initiation of transcription and replication. Structurally, ATRX contains a PHD zinc finger motif. ATRX is regulated throughout the cell cycle where it is differentially distributed within the nucleus. During interphase, ATRX predominately associates with the nuclear matrix, while during mitosis, ATRX localizes with condensed chromatin. At the onset of M phase, phosphorylation rapidly induces this redistribution of ATRX to the short arms of human acrocentric chromosomes, where it then specifically complexes with heterochromatin protein 1 thalassemia or ATRX syndrome

### Supplied As

200ug/ml of Ab Purified from Bioreactor Concentrate by Protein A/G. Prepared in 10mM PBS with 0.05% BSA & 0.05% azide. Also available WITHOUT BSA & azide at 1.0mg/ml.

### Storage and Stability

Antibody with azide - store at 2 to 8°C. Antibody without azide - store at -20 to -80°C. Antibody is stable for 24 months. Non-hazardous. No MSDS required.

### Research Areas

Cancer, Cardiovascular, Infectious Disease, Nuclear Marker

## Limitations and Warranty

This antibody is available for research use only and is not approved for use in diagnosis. There are no warranties, expressed or implied, which extend beyond this description. Company is not liable for any personal injury or economic loss resulting from this product.

---