

## OCT-4 (POU5F1) (Germ Cell Tumor Marker) Antibody

Mouse Monoclonal Antibody [Clone Oct4/3508]

Catalog No	Format	Size
5460-MSM1-P0	Purified Ab with BSA and Azide at 200ug/ml	20 ug
5460-MSM1-P1	Purified Ab with BSA and Azide at 200ug/ml	100 ug
5460-MSM1-P1ABX	Purified Ab WITHOUT BSA and Azide at 1.0mg/ml	100 ug

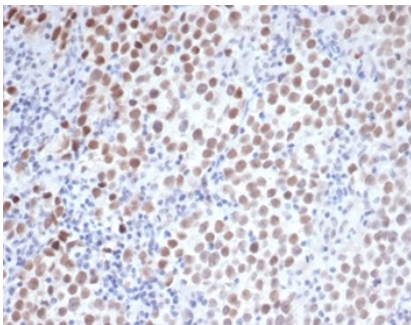
Applications	Tested Dillution	Note
Immunohistochemistry (IHC)	1-2ug/ml	30 min at RT. Staining of formalin-fixed tissues requires heating tissue sections in 10mM Tris with 1mM EDTA, pH 9.0, for 45 min at 95°C followed by cooling at RT for 20 minutes

### Product Details

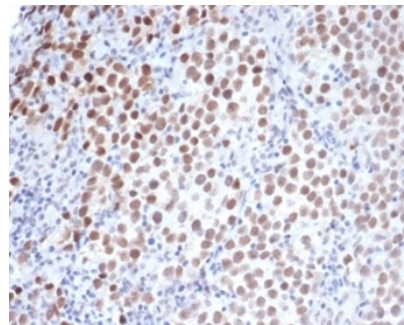
<b>Clone</b>	Oct4/3508
<b>Gene Name</b>	POU5F1
<b>Immunogen</b>	Recombinant fragment of human OCT-4/POU5F1 protein (around aa 1-134) (exact sequence is proprietary)
<b>Host</b>	Mouse
<b>Clonality</b>	Monoclonal
<b>Isotype / Light Chain</b>	IgG2b / Kappa
<b>Mol. Weight of Antigen</b>	38.6kDa
<b>Cellular Localization</b>	Cytoplasm, Nucleus
<b>Species Reactivity</b>	Human
<b>Positive Control</b>	Raji or U-937 cells. Human seminoma or testicular carcinoma.

\*Optimal dilution for a specific application should be determined.

### Product Images for OCT-4 (POU5F1) (Germ Cell Tumor Marker) Antibody



Formalin-fixed, paraffin-embedded human seminoma stained with OCT-4 Mouse Monoclonal Antibody (OCT4/3508) at 2ug/ml. HIER: Tris/EDTA, pH9.0, 45min. 2°C: HRP-polymer, 30min. DAB, 5min.



Formalin-fixed, paraffin-embedded human seminoma stained with OCT-4 Mouse Monoclonal Antibody (OCT4/3508) at 2ug/ml. HIER: Tris/EDTA, pH9.0, 45min. 2°C: HRP-polymer, 30min. DAB, 5min.

### Specificity & Comments

OCT4 is a member of the POU family of transcription factors, involved in the regulation of pluripotency during normal development and is detectable in embryonic stem and germ cells. OCT4 is a key regulator of self-renewal in embryonic stem cells; its expression is potentially correlated with tumorigenesis and can affect tumor recurrence or resistance to therapies. OCT4 is expressed in undifferentiated pluripotent cells, germ cells in ovary and testes. OCT4 Ab is useful in the identification of primary as well as metastatic germ cell tumors.

### Supplied As

200ug/ml of Ab purified from Bioreactor Concentrate by Protein A/G. Prepared in 10mM PBS with 0.05% BSA & 0.05% azide. Also available WITHOUT BSA & azide at 1.0mg/ml.

### Storage and Stability

Antibody with azide - store at 2 to 8 °C. Antibody without azide - store at -20 to -80 °C. Antibody is stable for 24 months. Non-hazardous. No MSDS required.

### Research Areas

Cardiovascular, Developmental Biology, Stem Cell Differentiation

## Limitations and Warranty

This antibody is available for research use only and is not approved for use in diagnosis. There are no warranties, expressed or implied, which extend beyond this description. Company is not liable for any personal injury or economic loss resulting from this product.

---