

Migfilin-1 / FBLIM1 Antibody

Mouse Monoclonal Antibody [Clone FBLIM1/4600]

Catalog No	Format	Size
54751-MSM2-P0	Purified Ab with BSA and Azide at 200ug/ml	20 ug
54751-MSM2-P1	Purified Ab with BSA and Azide at 200ug/ml	100 ug
54751-MSM2-P1ABX	Purified Ab WITHOUT BSA and Azide at 1.0mg/ml	100 ug

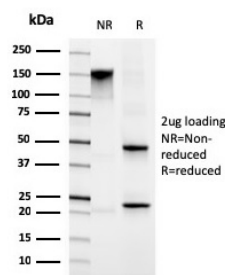
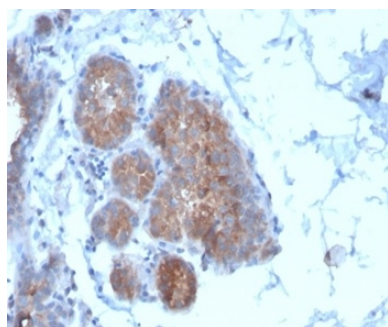
Applications	Tested Dillution	Note
Immunofluorescence (IF)	1-3ug/ml	
Immunohistochemistry (IHC)	1-2ug/ml	30 min at RT. Staining of formalin-fixed tissues requires heating tissue sections in 10mM Tris with 1mM EDTA, pH 9.0, for 45 min at 95°C followed by cooling at RT for 20 minutes
Western Blot (WB)	2-4ug/ml	

Product Details

Clone	FBLIM1/4600
Gene Name	FBLIM1
Immunogen	Recombinant full-length human FBLIM1 protein
Host	Mouse
Clonality	Monoclonal
Isotype / Light Chain	IgG1 / Kappa
Mol. Weight of Antigen	~41kDa
Cellular Localization	Cell junction, Cytoplasm, Cytoskeleton, Focal adhesion, Stress fiber
Species Reactivity	Human
Positive Control	A431 or MCF7 cells. Human heart or kidney tissue.

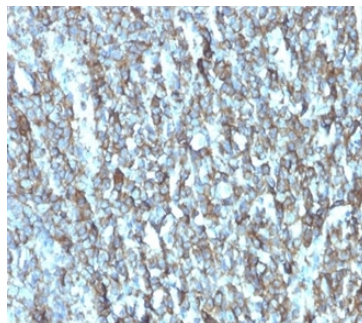
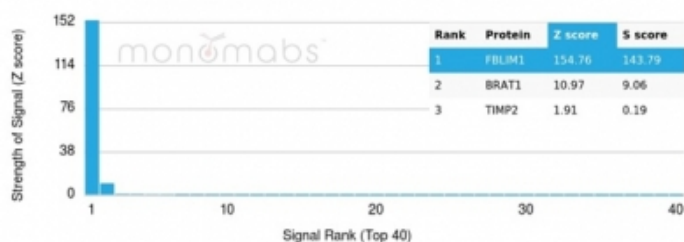
*Optimal dilution for a specific application should be determined.

Product Images for Migfilin-1 / FBLIM1 Antibody



Formalin-fixed, paraffin-embedded human breast carcinoma stained with Migfilin-1 Mouse Monoclonal Antibody (FBLIM1/4600) at 2ug/ml. HIER: Tris/EDTA, pH9.0, 45min. 2°C: HRP-polymer, 30min. DAB, 5min.

SDS-PAGE Analysis of Purified Migfilin-1 Mouse Monoclonal Antibody (FBLIM1/4600). Confirmation of Purity and Integrity of Antibody.



Formalin-fixed, paraffin-embedded human breast carcinoma stained with Migfilin-1 Mouse Monoclonal Antibody (FBLIM1/4600) at 2ug/ml. HIER: Tris/EDTA, pH9.0, 45min. 2°C: HRP-polymer, 30min. DAB, 5min.

Analysis of Protein Array containing more than 19,000 full-length human proteins using Migfilin-1 Mouse Monoclonal Antibody (FBLIM1/4600) Z- and S- Score: The Z-score represents the strength of a signal that a monoclonal antibody (MAb) (in combination with a fluorescently-tagged anti-IgG secondary antibody) produces when binding to a particular protein on the HuProt™ array. Z-scores are described in units of standard deviations (SD's) above the mean value of all signals generated on that array. If targets on HuProt™ are arranged in descending order of the Z-score, the S-score is the difference (also in units of SD's) between the Z-score. S-score therefore represents the relative target specificity of a MAb to its intended target. A MAb is considered to be specific to its intended target, if the MAb has an S-score of at least 2.5. For example, if a MAb binds to protein X with a Z-score of 43 and to protein Y with a Z-score of 14, then the S-score for the binding of that MAb to protein X is equal to 29.

Specificity & Comments

Kindlin-2 (also known as Mig-2, Migfilin) is an important component of cell-extracellular matrix adhesion. Kindlin-2 binds integrins and is involved in ECM adhesion, actin assembly and cell shape modulation. This monoclonal antibody recognizes kindlin-2 in multiple assays including Western blotting, immunoprecipitation, immunohistochemical and immunofluorescent staining.

Supplied As

200ug/ml of Ab purified from Bioreactor Concentrate by Protein A/G. Prepared in 10mM PBS with 0.05% BSA & 0.05% azide. Also available WITHOUT BSA & azide at 1.0mg/ml.

Storage and Stability

Antibody with azide - store at 2 to 8 °C. Antibody without azide - store at -20 to -80 °C. Antibody is stable for 24 months. Non-hazardous. No MSDS required.

Limitations and Warranty

This antibody is available for research use only and is not approved for use in diagnosis. There are no warranties, expressed or implied, which extend beyond this description. Company is not liable for any personal injury or economic loss resulting from this product.