

## Prostate Specific Acid Phosphatase (PSAP) Antibody

Mouse Monoclonal Antibody [Clone ACP3/1338]

Catalog No	Format	Size
55-MSM1-P0	Purified Ab with BSA and Azide at 200ug/ml	20 ug
55-MSM1-P1	Purified Ab with BSA and Azide at 200ug/ml	100 ug
55-MSM1-P1ABX	Purified Ab WITHOUT BSA and Azide at 1.0mg/ml	100 ug

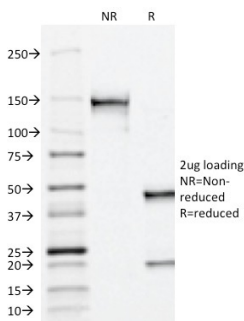
Applications	Tested Dillution	Note
Immunohistochemistry (IHC)	1-2ug/ml	30 min at RT. Staining of formalin-fixed tissues requires heating tissue sections in 10mM Tris with 1mM EDTA, pH 9.0, for 45 min at 95°C followed by cooling at RT for 20 minutes

### Product Details

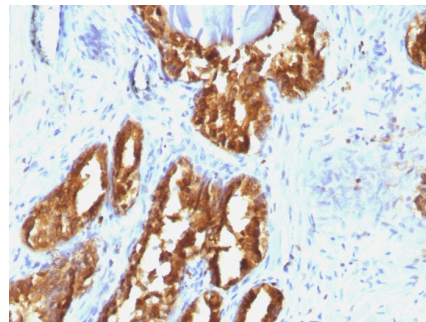
<b>Clone</b>	ACPP/1338
<b>Gene Name</b>	ACP3
<b>Immunogen</b>	Recombinant full-length human ACP3 protein
<b>Host</b>	Mouse
<b>Clonality</b>	Monoclonal
<b>Isotype / Light Chain</b>	IgG1 / Kappa
<b>Mol. Weight of Antigen</b>	52kDa
<b>Cellular Localization</b>	Cell membrane, Cytoplasm, Cytosol, Lysosome membrane, Nucleus, Secreted
<b>Species Reactivity</b>	Human
<b>Positive Control</b>	PC12 cells. Normal prostate or prostate carcinoma.

\*Optimal dilution for a specific application should be determined.

### Product Images for Prostate Specific Acid Phosphatase (PSAP) Antibody



SDS-PAGE Analysis of Purified PSAP Mouse Monoclonal Antibody (ACPP/1338). Confirmation of Integrity and Purity of Antibody.



Formalin-fixed, paraffin-embedded human Prostate Carcinoma stained with PSAP Mouse Monoclonal Antibody (ACPP/1338).

### Specificity & Comments

Recognizes a protein of 52kDa, identified as prostate specific acid phosphatase (PSAP). This enzyme catalyzes the conversion of orthophosphoric monoester to alcohol and orthophosphate. It is synthesized under androgen regulation and is secreted by the epithelial cells of the prostate gland. PSAP is found in non-neoplastic adult and fetal prostatic glands, primary and metastatic prostatic carcinomas. It shows no staining in granulocytes, osteoclasts, parietal cells of the stomach, liver cells, renal cell or breast carcinomas.

### Supplied As

200ug/ml of Ab Purified from Bioreactor Concentrate by Protein A/G. Prepared in 10mM PBS with 0.05% BSA & 0.05% azide. Also available WITHOUT BSA & azide at 1.0mg/ml.

### Storage and Stability

Antibody with azide - store at 2 to 8°C. Antibody without azide - store at -20 to -80°C. Antibody is stable for 24 months. Non-hazardous. No MSDS required.

### Research Areas

Immunology

## Limitations and Warranty

This antibody is available for research use only and is not approved for use in diagnosis. There are no warranties, expressed or implied, which extend beyond this description. Company is not liable for any personal injury or economic loss resulting from this product.

---