

## Recombinant Prostate Specific Acid Phosphatase (PSAP) Antibody

Mouse Monoclonal Antibody [Clone rACPP/1338]

Catalog No	Format	Size
55-MSM4-P0	Purified Ab with BSA and Azide at 200ug/ml	20 ug
55-MSM4-P1	Purified Ab with BSA and Azide at 200ug/ml	100 ug
55-MSM4-P1ABX	Purified Ab WITHOUT BSA and Azide at 1.0mg/ml	100 ug

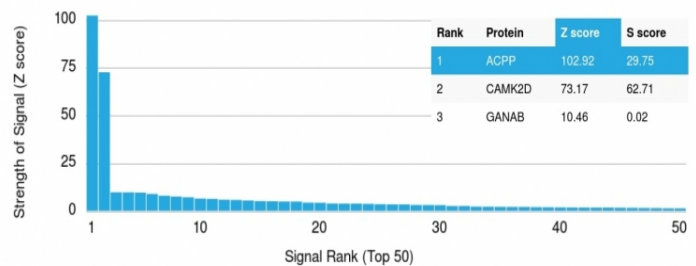
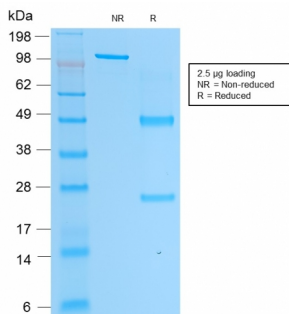
Applications	Tested Dillution	Note
Immunohistochemistry (IHC)	1-2ug/ml	30 min at RT. Staining of formalin-fixed tissues requires heating tissue sections in 10mM Tris with 1mM EDTA, pH 9.0, for 45 min at 95°C followed by cooling at RT for 20 minutes

### Product Details

Clone	rACPP/1338
Gene Name	ACP3
Immunogen	Recombinant full-length human ACP3 protein
Host	Mouse
Clonality	Monoclonal
Isotype / Light Chain	IgG1 / Kappa
Mol. Weight of Antigen	52kDa
Cellular Localization	Cell membrane, Cytoplasm, Cytosol, Lysosome membrane, Nucleus, Secreted
Species Reactivity	Human
Positive Control	PC12 cells. Normal prostate or prostate carcinoma.

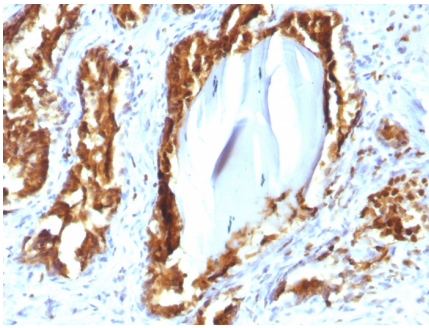
\*Optimal dilution for a specific application should be determined.

### Product Images for Recombinant Prostate Specific Acid Phosphatase (PSAP) Antibody



SDS-PAGE Analysis of Purified PSAP Mouse Monoclonal Antibody (rACPP/1338). Confirmation of Purity and Integrity of Antibody.

Analysis of Protein Array containing >19,000 full-length human proteins using PSAP Mouse Monoclonal Antibody (rACPP/1338) Z- and S- Score: The Z-score represents the strength of a signal that a monoclonal antibody (Monoclonal Antibody) (in combination with a fluorescently-tagged anti-IgG secondary antibody) produces when binding to a particular protein on the HuProt™ array. Z-scores are described in units of standard deviations (SD's) above the mean value of all signals generated on that array. If targets on HuProt™ are arranged in descending order of the Z-score, the S-score is the difference (also in units of SD's) between the Z-score. S-score therefore represents the relative target specificity of a Monoclonal Antibody to its intended target. A Monoclonal Antibody is considered to be specific to its intended target, if the Monoclonal Antibody has an S-score of at least 2.5. For example, if a Monoclonal Antibody binds to protein X with a Z-score of 43 and to protein Y with a Z-score of 14, then the S-score for the binding of that Monoclonal Antibody to protein X is equal to 29.



Formalin-fixed, paraffin-embedded human Prostate Carcinoma stained with PSAP Mouse Recombinant Monoclonal Antibody (rACPP/1338).

---

### Specificity & Comments

Recognizes a protein of 52kDa, identified as prostate specific acid phosphatase (PSAP). This enzyme catalyzes the conversion of orthophosphoric monoester to alcohol and orthophosphate. It is synthesized under androgen regulation and is secreted by the epithelial cells of the prostate gland. PSAP is found in non-neoplastic adult and fetal prostatic glands, primary and metastatic prostatic carcinomas. It shows no staining in granulocytes, osteoclasts, parietal cells of the stomach, liver cells, renal cell or breast carcinomas.

---

### Limitations and Warranty

This antibody is available for research use only and is not approved for use in diagnosis. There are no warranties, expressed or implied, which extend beyond this description. Company is not liable for any personal injury or economic loss resulting from this product.

---

### Supplied As

200ug/ml of Ab Purified from Bioreactor Concentrate by Protein A/G. Prepared in 10mM PBS with 0.05% BSA & 0.05% azide. Also available WITHOUT BSA & azide at 1.0mg/ml.

---

### Storage and Stability

Antibody with azide - store at 2 to 8°C. Antibody without azide - store at -20 to -80°C. Antibody is stable for 24 months. Non-hazardous. No MSDS required.

---

### Research Areas

Immunology, Prostate Cancer

---