

DOG-1 / ANO1 (Marker for Gastrointestinal Stromal Tumors) Antibody

Mouse Monoclonal Antibody [Clone DG1/447 + DOG-1.1]

Catalog No	Format	Size
55107-MSM3-P0	Purified Ab with BSA and Azide at 200ug/ml	20 ug
55107-MSM3-P1	Purified Ab with BSA and Azide at 200ug/ml	100 ug
55107-MSM3-P1ABX	Purified Ab WITHOUT BSA and Azide at 1.0mg/ml	100 ug

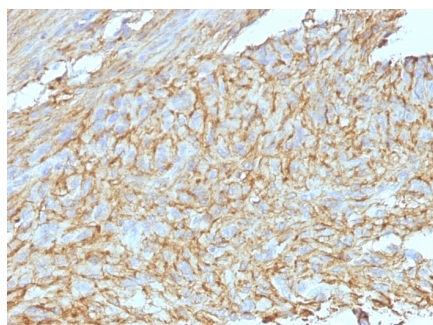
Applications	Tested Dillution	Note
Immunohistochemistry (IHC)	1-2ug/ml	30 min at RT. Staining of formalin-fixed tissues requires heating tissue sections in 10mM Tris with 1mM EDTA, pH 9.0, for 45 min at 95°C followed by cooling at RT for 20 minutes

Product Details

Clone	DG1/447 + DOG-1.1
Gene Name	ANO1
Immunogen	Recombinant human DOG-1 protein (DG1/447) + A synthetic peptide from human DOG-1 protein (MSDFVDWVIPDIPKDISQQIHKEKVLMLVELFMREEQDKQQLL-ETCMEKERQKDEPPCNHHNTKACPDSLGS-APSHAYHGGVL), conjugated to a carrier protein (DOG-1.1).
Host	Mouse
Clonality	Monoclonal
Isotype / Light Chain	IgG1 / Kappa
Mol. Weight of Antigen	~114kDa
Cellular Localization	Cell membrane, Cytoplasm
Species Reactivity	Human
Positive Control	Gastrointestinal Stromal Tumor (GIST) or testicular germ cell tumor. Melanocytes in the basal layer of the epidermis and mast cells in the dermis of normal skin.

*Optimal dilution for a specific application should be determined.

Product Images for DOG-1 / ANO1 (Marker for Gastrointestinal Stromal Tumors) Antibody



Formalin-fixed, paraffin-embedded human GIST stained with DOG-1 Monoclonal Antibody (DG1/447 + DOG1.1).

Specificity & Comments

Expression of DOG-1 protein is elevated in the gastrointestinal stromal tumors (GIST's), c-kit signaling-driven mesenchymal tumors of the GI tract. DOG-1 is rarely expressed in other soft tissue tumors, which, due to appearance, may be difficult to diagnose. Immunoreactivity for DOG-1 has been reported in 97.8 percent of scorable GIST's, including all c-kit negative GIST's. Overexpression of DOG-1 has been suggested to aid in the identification of GISTs, including Platelet-Derived Growth Factor Receptor Alpha mutants that fail to express c-kit antigen. The overall sensitivity of DOG1 and c-kit in GIST's is nearly identical: 94.4% vs. 94.7%.

Limitations and Warranty

This antibody is available for research use only and is not approved for use in diagnosis. There are no warranties, expressed or implied, which extend beyond this description. Company is not liable for any personal injury or economic loss resulting from this product.

Supplied As

200ug/ml of Ab Purified from Bioreactor Concentrate by Protein A/G. Prepared in 10mM PBS with 0.05% BSA & 0.05% azide. Also available WITHOUT BSA & azide at 1.0mg/ml.

Storage and Stability

Antibody with azide - store at 2 to 8°C. Antibody without azide - store at -20 to -80°C. Antibody is stable for 24 months. Non-hazardous. No MSDS required.

Research Areas

Neuroscience, Infectious Disease
