

## Kindlin-1 / KIND1 Antibody

Mouse Monoclonal Antibody [Clone 4A5.14]

Catalog No	Format	Size
55612-MSM1-P0	Purified Ab with BSA and Azide at 200ug/ml	20 ug
55612-MSM1-P1	Purified Ab with BSA and Azide at 200ug/ml	100 ug
55612-MSM1-P1ABX	Purified Ab WITHOUT BSA and Azide at 1.0mg/ml	100 ug

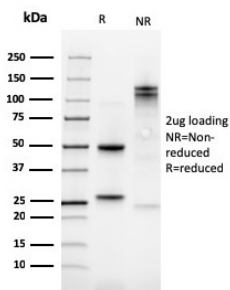
Applications	Tested Dillution	Note
Immunohistochemistry (IHC)	1-2ug/ml	30 min at RT. Staining of formalin-fixed tissues requires heating tissue sections in 10mM Tris with 1mM EDTA, pH 9.0, for 45 min at 95°C followed by cooling at RT for 20 minutes
Western Blot (WB)	2-4ug/ml	

### Product Details

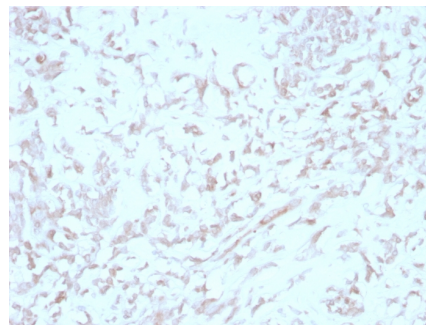
<b>Clone</b>	4A5.14
<b>Gene Name</b>	FERMT1
<b>Immunogen</b>	Recombinant protein containing Kindlin-1 (residues 216-677)
<b>Host</b>	Mouse
<b>Clonality</b>	Monoclonal
<b>Isotype / Light Chain</b>	IgG2a / Lambda
<b>Mol. Weight of Antigen</b>	77kDa
<b>Cellular Localization</b>	Cell junction, Cell projection, Cytoplasm, Cytoskeleton, Focal adhesion, Ruffle membrane
<b>Species Reactivity</b>	Human
<b>Positive Control</b>	293T whole cell lysate. Human tonsil or liver.

\*Optimal dilution for a specific application should be determined.

### Product Images for Kindlin-1 / KIND1 Antibody



SDS-PAGE Analysis of Purified KIND1 Mouse Monoclonal Antibody (4A5.14). Confirmation of Purity and Integrity of Antibody.



Formalin-fixed, paraffin-embedded human liver stained with KIND1 Mouse Monoclonal Antibody (4A5.14).

**Specificity & Comments**

Kindlin-1 (also known as KIND1, KINDLERIN, UNC112-RELATED PROTEIN 1 (URP1) is an important component of cell-extracellular matrix adhesion. Kindlin-1 is involved in cell adhesion, possibly via its interaction with integrins and may mediate TGF-beta 1 signaling during tumor progression. Kindlin-1 has been shown to be significantly upregulated in lung and colon carcinomas. Mutations in the kindlin-1 gene, FERMT1, causes Kindler syndrome. Kindler syndrome is an autosomal recessive disorder characterized by neonatal blistering, sun sensitivity, atrophy, abnormal pigmentation and fragility of the skin. We have developed monoclonal anti-kindlin-1 antibodies. This monoclonal antibody recognizes kindlin-1 in multiple assays including Western blotting, immunoprecipitation, immunohistochemical and immunofluorescent staining.

---

**Limitations and Warranty**

This antibody is available for research use only and is not approved for use in diagnosis. There are no warranties, expressed or implied, which extend beyond this description. Company is not liable for any personal injury or economic loss resulting from this product.

---

**Supplied As**

200ug/ml of Ab purified from Bioreactor Concentrate by Protein A/G. Prepared in 10mM PBS with 0.05% BSA & 0.05% azide. Also available WITHOUT BSA & azide at 1.0mg/ml.

---

**Storage and Stability**

Antibody with azide - store at 2 to 8°C. Antibody without azide - store at -20 to -80°C. Antibody is stable for 24 months. Non-hazardous. No MSDS required.

---