

## Recombinant Prolactin (Pituitary Tumor Marker) Antibody

Rabbit Monoclonal Antibody [Clone PRL/4908R]

Catalog No	Format	Size
5617-RBM8-P0	Purified Ab with BSA and Azide at 200ug/ml	20 ug
5617-RBM8-P1	Purified Ab with BSA and Azide at 200ug/ml	100 ug
5617-RBM8-P1ABX	Purified Ab WITHOUT BSA and Azide at 1.0mg/ml	100 ug

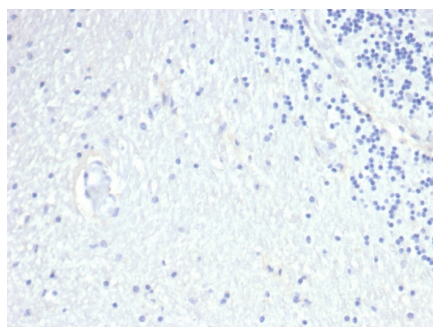
Applications	Tested Dillution	Note
Immunohistochemistry (IHC)	1-2ug/ml	30 min at RT. Staining of formalin-fixed tissues requires heating tissue sections in 10mM Tris with 1mM EDTA, pH 9.0, for 45 min at 95°C followed by cooling at RT for 20 minutes

### Product Details

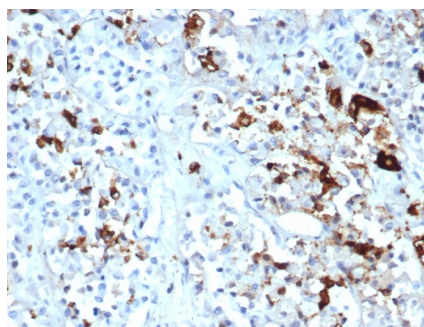
<b>Clone</b>	PRL/4908R
<b>Gene Name</b>	PRL
<b>Immunogen</b>	Recombinant fragment of human Prolactin (PRL) protein (around aa 63-201) (exact sequence is proprietary)
<b>Host</b>	Rabbit
<b>Clonality</b>	Monoclonal
<b>Isotype / Light Chain</b>	IgG / Kappa
<b>Mol. Weight of Antigen</b>	27kDa
<b>Cellular Localization</b>	Secreted
<b>Species Reactivity</b>	Human
<b>Positive Control</b>	Pituitary tissue. Pituitary lysate.

*\*Optimal dilution for a specific application should be determined.*

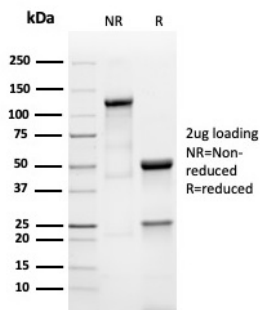
### Product Images for Recombinant Prolactin (Pituitary Tumor Marker) Antibody



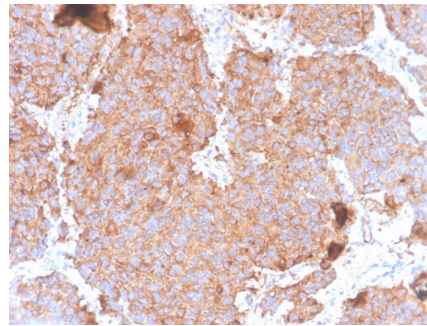
IHC analysis of formalin-fixed, paraffin-embedded human brain. Negative tissue control using PRL/4908R at 2ug/ml in PBS for 30min RT. HIER: Tris/EDTA, pH9.0, 45min. 2°C: HRP-polymer, 30min. DAB, 5min.



Formalin-fixed, paraffin-embedded human pituitary carcinoma stained with Prolactin Recombinant Rabbit Monoclonal Antibody (PRL/4908R).



SDS-PAGE Analysis Prolactin Recombinant Rabbit Monoclonal Antibody (PRL/4908R). Confirmation of Purity and Integrity of Antibody.



Formalin-fixed, paraffin-embedded human pituitary stained with Prolactin Recombinant Rabbit Monoclonal Antibody (PRL/4908R).

### Specificity & Comments

Prolactin is a growth factor that is secreted by the anterior pituitary. It is necessary for the proliferation and differentiation of the mammary glands. Prolactin is useful in the classification of pituitary tumors and study of pituitary disease. It also plays a role in the development of mammary cancer, functioning dually as a mitogen and a differentiating agent.

### Supplied As

200ug/ml of Ab purified from Bioreactor Concentrate by Protein A/G. Prepared in 10mM PBS with 0.05% BSA & 0.05% azide. Also available WITHOUT BSA & azide at 1.0mg/ml.

### Storage and Stability

Antibody with azide - store at 2 to 8 °C. Antibody without azide - store at -20 to -80 °C. Antibody is stable for 24 months. Non-hazardous. No MSDS required.

### Research Areas

Cytokine Signaling, Immunology

### Limitations and Warranty

This antibody is available for research use only and is not approved for use in diagnosis. There are no warranties, expressed or implied, which extend beyond this description. Company is not liable for any personal injury or economic loss resulting from this product.