

Prolactin Receptor (hPRL Receptor) Antibody

Mouse Monoclonal Antibody [Clone B6.2]

Catalog No	Format	Size
5618-MSM1-P0	Purified Ab with BSA and Azide at 200ug/ml	20 ug
5618-MSM1-P1	Purified Ab with BSA and Azide at 200ug/ml	100 ug
5618-MSM1-P1ABX	Purified Ab WITHOUT BSA at 1.0mg/ml	100 ug

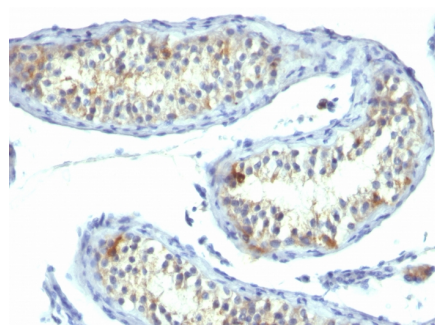
Applications	Tested Dillution	Note
Flow Cytometry (Flow)	1-2ug/million cells	
Immunofluorescence (IF)	1-3ug/ml	
Immunohistochemistry (IHC)	1-2ug/ml	30 min at RT. Staining of formalin-fixed tissues requires heating tissue sections in 10mM Tris with 1mM EDTA, pH 9.0, for 45 min at 95°C followed by cooling at RT for 20 minutes

Product Details

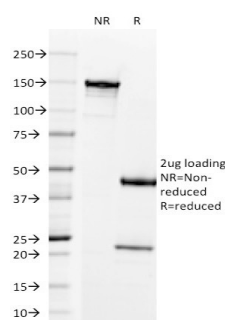
Clone	B6.2
Gene Name	PRLR
Immunogen	Semi-Purified human prolactin receptor
Host	Mouse
Clonality	Monoclonal
Isotype / Light Chain	IgG1 / Kappa
Mol. Weight of Antigen	70kDa
Cellular Localization	Membrane, Secreted
Species Reactivity	Human
Positive Control	Testicular Carcinoma.

**Optimal dilution for a specific application should be determined.*

Product Images for Prolactin Receptor (hPRL Receptor) Antibody



Formalin-fixed, paraffin-embedded human testicular carcinoma stained with Prolactin Receptor Mouse Monoclonal Antibody (B6.2).



SDS-PAGE Analysis of Purified Prolactin Receptor Mouse Monoclonal Antibody (B6.2). Confirmation of Integrity and Purity of Antibody.

Specificity & Comments

It recognizes a protein of 70kDa, identified as prolactin receptor. Prolactin is a pituitary hormone involved in the stimulation of milk production, salt and water regulation, growth, development and reproduction. The initial step in its action is the binding to a specific membrane receptor (prolactin receptor), which belongs to the superfamily of class 1 cytokine receptors. The function of the prolactin receptor is mediated, at least in part, by two families of signaling molecules: Janus kinases and signal transducers and activators of transcription.

Supplied As

200ug/ml of Ab Purified from Bioreactor Concentrate by Protein A/G. Prepared in 10mM PBS with 0.05% BSA & 0.05% azide. Also available WITHOUT BSA at 1.0mg/ml.

Storage and Stability

Antibody with azide - store at 2 to 8°C. Antibody is stable for 24 months. Non-hazardous. No MSDS required.

Research Areas

Cardiovascular, Cytokine Signaling, Immunology

Limitations and Warranty

This antibody is available for research use only and is not approved for use in diagnosis. There are no warranties, expressed or implied, which extend beyond this description. Company is not liable for any personal injury or economic loss resulting from this product.
