

Recombinant PMEPA1 / TMEPAI (Tumor Suppressor Oncoprotein) Antibody

Rabbit Monoclonal Antibody [Clone PMEPA1/6421R]

Catalog No	Format	Size
56937-RBM11-P0	Purified Ab with BSA and Azide at 200ug/ml	20 ug
56937-RBM11-P1	Purified Ab with BSA and Azide at 200ug/ml	100 ug
56937-RBM11-P1ABX	Purified Ab WITHOUT BSA and Azide at 1.0mg/ml	100 ug

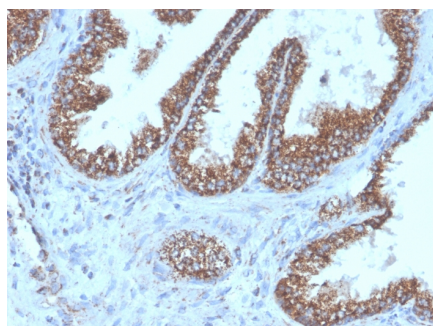
Applications	Tested Dillution	Note
Immunohistochemistry (IHC)	1-2ug/ml	30 min at RT. Staining of formalin-fixed tissues requires heating tissue sections in 10mM Tris with 1mM EDTA, pH 9.0, for 45 min at 95°C followed by cooling at RT for 20 minutes

Product Details

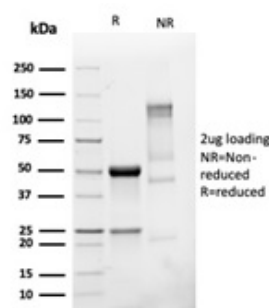
Clone	PMEPA1/6421R
Gene Name	PMEPA1
Immunogen	Recombinant full-length human PMEPA1 protein
Host	Rabbit
Clonality	Monoclonal
Isotype / Light Chain	IgG / Kappa
Mol. Weight of Antigen	32kDa
Cellular Localization	Early endosome membrane, Golgi apparatus membrane
Species Reactivity	Human
Positive Control	Human prostate, breast or renal cell carcinoma tissue (IHC).

*Optimal dilution for a specific application should be determined.

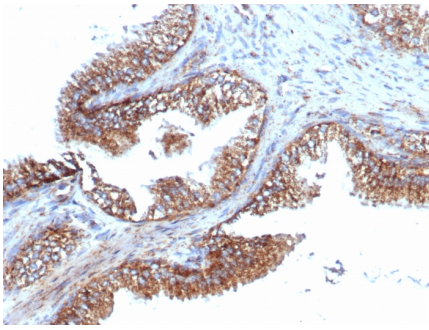
Product Images for Recombinant PMEPA1 / TMEPAI (Tumor Suppressor Oncoprotein) Antibody



Formalin-fixed, paraffin-embedded human prostate carcinoma stained with PMEPA1 Recombinant Rabbit Monoclonal Antibody (PMEPA1/6421R).



SDS-PAGE Analysis of Purified PMEPA1 Recombinant Rabbit Monoclonal (PMEPA1/6421R). Confirmation of Purity and Integrity of Antibody.



Formalin-fixed, paraffin-embedded human prostate carcinoma stained with PMEPA1 Recombinant Rabbit Monoclonal Antibody (PMEPA1/6421R).

Specificity & Comments

PMEPA1 (prostate transmembrane protein, androgen induced 1) is a 287 amino acid single-pass membrane protein that contains WW-binding motifs and localizes to the cell membrane. Expressed at high levels in prostate, kidney and ovary, PMEPA1 interacts with NEDD4 and may play a role in regulating AR (androgen receptor) levels, specifically in prostate cells. Down regulation of PMEPA1 is observed in prostate tumors, suggesting that PMEPA1 may exhibit activity as a tumor suppressor. Overexpression of this protein may play a role in multiple types of cancer.

Limitations and Warranty

This antibody is available for research use only and is not approved for use in diagnosis. There are no warranties, expressed or implied, which extend beyond this description. Company is not liable for any personal injury or economic loss resulting from this product.

Supplied As

200ug/ml of Ab purified from Bioreactor Concentrate by Protein A/G. Prepared in 10mM PBS with 0.05% BSA & 0.05% azide. Also available WITHOUT BSA & azide at 1.0mg/ml.

Storage and Stability

Antibody with azide - store at 2 to 8 °C. Antibody without azide - store at -20 to -80 °C. Antibody is stable for 24 months. Non-hazardous. No MSDS required.

Research Areas

Signal Transduction
