

## Parathyroid Hormone (PTH) (N- & C-Terminal) Antibody

Mouse Monoclonal Antibody [Clone 3H9 + PTH/1175]

Catalog No	Format	Size
5741-MSM6-P0	Purified Ab with BSA and Azide at 200ug/ml	20 ug
5741-MSM6-P1	Purified Ab with BSA and Azide at 200ug/ml	100 ug
5741-MSM6-P1ABX	Purified Ab WITHOUT BSA and Azide at 1.0mg/ml	100 ug

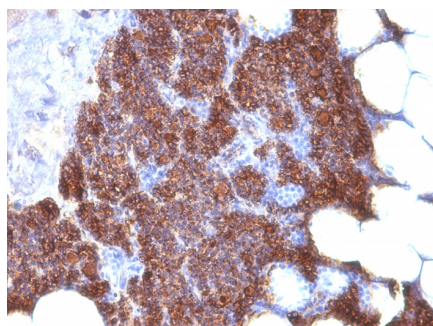
Applications	Tested Dillution	Note
Immunohistochemistry (IHC)	1-2ug/ml	30 min at RT. Staining of formalin-fixed tissues requires heating tissue sections in 10mM Tris with 1mM EDTA, pH 9.0, for 45 min at 95°C followed by cooling at RT for 20 minutes

### Product Details

<b>Clone</b>	3H9 + PTH/1175
<b>Gene Name</b>	PTH
<b>Immunogen</b>	A synthetic peptide around aa 1-34 of human mature-PTH-polypeptide (exact sequence is proprietary) (3H9); A recombinant fragment around aa 32-115 of human mature PTH-polypeptide (exact sequence is proprietary)
<b>Host</b>	Mouse
<b>Clonality</b>	Monoclonal
<b>Isotype / Light Chain</b>	IgG2b / Kappa
<b>Mol. Weight of Antigen</b>	9kDa
<b>Cellular Localization</b>	Secreted
<b>Species Reactivity</b>	Human
<b>Positive Control</b>	Human parathyroid gland carcinoma.

*\*Optimal dilution for a specific application should be determined.*

### Product Images for Parathyroid Hormone (PTH) (N- & C-Terminal) Antibody



Formalin-fixed, paraffin-embedded human Parathyroid stained with PTH Monoclonal Antibody (3H9 + PTH/1175).

### **Specificity & Comments**

Epitope of this MAb maps in the C-terminus of PTH, a hormone produced by the parathyroid gland that regulates the concentration of calcium and phosphorus in extracellular fluid. This hormone elevates blood Ca<sup>2+</sup> levels by dissolving the salts in bone and preventing their renal excretion. It is produced in the parathyroid gland as an 84 amino acid single chain polypeptide. It can also be secreted as N-terminal truncated fragments or C-terminal fragments after intracellular degradation, as in case of hypercalcemia. Defects in this gene are a cause of familial isolated hypoparathyroidism (FIH); also called autosomal dominant hypoparathyroidism or autosomal dominant hypocalcemia. FIH is characterized by hypocalcemia and hyperphosphatemia due to inadequate secretion of parathyroid hormone. Symptoms are seizures, tetany and cramps. FIH exist both as autosomal dominant and recessive forms of hypoparathyroidism.

---

### **Limitations and Warranty**

This antibody is available for research use only and is not approved for use in diagnosis. There are no warranties, expressed or implied, which extend beyond this description. Company is not liable for any personal injury or economic loss resulting from this product.

---

### **Supplied As**

200ug/ml of Ab Purified from Bioreactor Concentrate by Protein A/G. Prepared in 10mM PBS with 0.05% BSA & 0.05% azide. Also available WITHOUT BSA & azide at 1.0mg/ml.

---

### **Storage and Stability**

Antibody with azide - store at 2 to 8°C. Antibody without azide - store at -20 to -80°C. Antibody is stable for 24 months. Non-hazardous. No MSDS required.

---

### **Research Areas**

Cardiovascular, Mesenchymal Stem Cell Differentiation, Signal Transduction

---