

SLAMF7 / CS1 / CD319 Antibody

Mouse Monoclonal Antibody [Clone SLAMF7/3649]

| Catalog No | Format | Size |
|------------------|---|--------|
| 57823-MSM1-P0 | Purified Ab with BSA and Azide at 200ug/ml | 20 ug |
| 57823-MSM1-P1 | Purified Ab with BSA and Azide at 200ug/ml | 100 ug |
| 57823-MSM1-P1ABX | Purified Ab WITHOUT BSA and Azide at 1.0mg/ml | 100 ug |

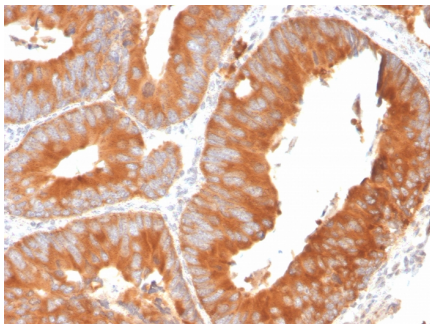
| Applications | Tested Dillution | Note |
|----------------------------|------------------|---|
| Immunohistochemistry (IHC) | 1-2ug/ml | 30 min at RT. Staining of formalin-fixed tissues requires heating tissue sections in 10mM Tris with 1mM EDTA, pH 9.0, for 45 min at 95°C followed by cooling at RT for 20 minutes |

Product Details

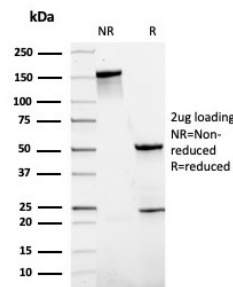
| | |
|------------------------|--|
| Clone | SLAMF7/3649 |
| Gene Name | SLAMF7 |
| Immunogen | Recombinant fragment of human SLAMF7 protein (around aa 249-335) (exact sequence is proprietary) |
| Host | Mouse |
| Clonality | Monoclonal |
| Isotype / Light Chain | IgG1 / Kappa |
| Mol. Weight of Antigen | 37kDa |
| Cellular Localization | Membrane |
| Species Reactivity | Human |
| Positive Control | Human tonsil tissue. |

*Optimal dilution for a specific application should be determined.

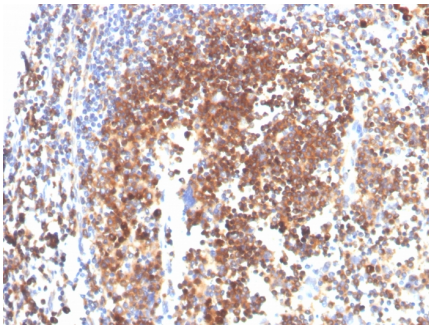
Product Images for SLAMF7 / CS1 / CD319 Antibody



Formalin-fixed, paraffin-embedded human spleen stained with SLAMF7 / CS1 Mouse Monoclonal Antibody (SLAMF7/3649).



SDS-PAGE Analysis of Purified SLAMF7 / CS1 Mouse Monoclonal Antibody (SLAMF7/3649). Confirmation of Purity and Integrity of Antibody.



Formalin-fixed, paraffin-embedded human tonsil stained with SLAMF7 / CS1 Mouse Monoclonal Antibody (SLAMF7/3649).

Specificity & Comments

CS1, also known as novel Ly9, SLAMF7, 19A24 or CRACC, is a homophilic cell surface receptor. It is a member of the SLAM (signaling lymphocytic activation molecule) family of receptors expressed on natural killer (NK) cells, T cells and stimulated B cells. CS1 contains immunoreceptor tyrosine-based switch motifs in its cytoplasmic domain but, unlike other SLAM receptors, it does not recruit SAP (SLAM-associated protein). In humans, CS1 activates NK cells through an EAT-2-mediated pathway that is SAP-independent. CS1 recruits and associates with EAT-2, a protein closely related to SAP. EAT-2 induces phosphorylation of CS1 which then, upon ligand binding, activates downstream cytotoxicity effectors PLC and PI 3K. In mice, the EAT-2 association with CS1 has an inhibitory effect on the activation of NK cells.

Limitations and Warranty

This antibody is available for research use only and is not approved for use in diagnosis. There are no warranties, expressed or implied, which extend beyond this description. Company is not liable for any personal injury or economic loss resulting from this product.

Supplied As

200ug/ml of Ab purified from Bioreactor Concentrate by Protein A/G. Prepared in 10mM PBS with 0.05% BSA & 0.05% azide. Also available WITHOUT BSA & azide at 1.0mg/ml.

Storage and Stability

Antibody with azide - store at 2 to 8°C. Antibody without azide - store at -20 to -80°C. Antibody is stable for 24 months. Non-hazardous. No MSDS required.

Research Areas

Immunology, Dendritic Cell Marker, Immune checkpoint