

Recombinant CD45 / LCA (Leucocyte Marker) Antibody

Rabbit Monoclonal Antibody [Clone PTPRC/1783R + PTPRC/1975R]

Catalog No	Format	Size
5788-RBM26-P0	Purified Ab with BSA and Azide at 200ug/ml	20 ug
5788-RBM26-P1	Purified Ab with BSA and Azide at 200ug/ml	100 ug
5788-RBM26-P1ABX	Purified Ab WITHOUT BSA and Azide at 1.0mg/ml	100 ug

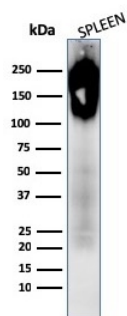
Applications	Tested Dillution	Note
Immunohistochemistry (IHC)	1-2ug/ml	30 min at RT. Staining of formalin-fixed tissues requires heating tissue sections in 10mM Tris with 1mM EDTA, pH 9.0, for 45 min at 95°C followed by cooling at RT for 20 minutes
Western Blot (WB)	2-4ug/ml	

Product Details

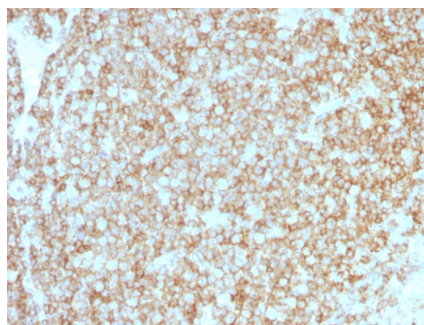
Clone	PTPRC/1783R + PTPRC/1975R
Gene Name	PTPRC
Immunogen	Recombinant full-length human CD45 protein
Host	Rabbit
Clonality	Monoclonal
Isotype / Light Chain	IgG / Kappa
Mol. Weight of Antigen	180-220kDa
Cellular Localization	Cell membrane, Membrane raft
Species Reactivity	Human
Positive Control	Ramos, U-698 or GA-10 cells. Tonsil and Spleen.

*Optimal dilution for a specific application should be determined.

Product Images for Recombinant CD45 / LCA (Leucocyte Marker) Antibody



Western Blot Analysis of human spleen tissue lysates using CD45 Recombinant Rabbit Monoclonal Antibody (PTPRC/1783R + PTPRC/1975R).



Formalin-fixed, paraffin-embedded human Tonsil stained with CD45 Recombinant Rabbit Monoclonal Antibody (PTPRC/1783R + PTPRC/1975R).

Specificity & Comments

Recognizes the CD45 leukocyte common antigen (LCA) family which is comprised of at least four isoforms of membrane glycoproteins (220, 205, 190, 180kDa) expressed on hematopoietic cell lines but absent on non-hematopoietic cell lines, normal and malignant non-hematopoietic tissues. The intracellular portions of these molecules have protein phosphatase activity and are involved in regulation of transmembrane signals. Antibody to CD45 is useful in differential diagnosis of lymphoid tumors from non-hematopoietic undifferentiated neoplasms. A positive result with this MAb is highly indicative of lymphoid or myeloid origin. Certain types of lymphoid neoplasms may lack CD45 (Hodgkin lymphoma, some T-cell lymphomas, and some leukemias) so its absence does not rule out a hematolymphoid tumor. This antibody is expressed almost exclusively by cells of hematopoietic lineage and is present in most benign and malignant lymphocytes as well as plasma cell precursors.

Limitations and Warranty

This antibody is available for research use only and is not approved for use in diagnosis. There are no warranties, expressed or implied, which extend beyond this description. Company is not liable for any personal injury or economic loss resulting from this product.

Supplied As

200ug/ml of Ab Purified by Protein A. Prepared in 10mM PBS with 0.05% BSA & 0.05% azide. Also available WITHOUT BSA & azide at 1.0mg/ml.

Storage and Stability

Antibody with azide - store at 2 to 8°C. Antibody without azide - store at -20 to -80°C. Antibody is stable for 24 months. Non-hazardous. No MSDS required.

Research Areas

Autophagy, Cancer, Developmental Biology, Immuno Oncology, Immunology, B Cell Markers, Dendritic Cell Marker, Hematopoietic Stem Cells, Mesenchymal Stem Cell Differentiation
