

## Actin alpha 1, Skeletal Muscle Antibody

Mouse Monoclonal Antibody [Clone ACTA1/360]

Catalog No	Format	Size
58-MSM1-P0	Purified Ab with BSA and Azide at 200ug/ml	20 ug
58-MSM1-P1	Purified Ab with BSA and Azide at 200ug/ml	100 ug
58-MSM1-P1ABX	Purified Ab WITHOUT BSA and Azide at 1.0mg/ml	100 ug

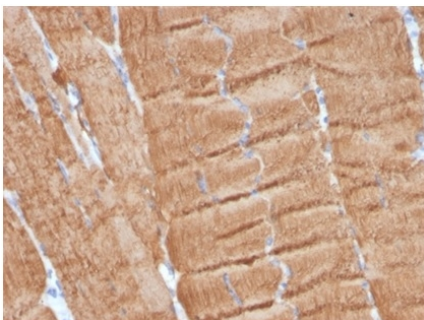
Applications	Tested Dillution	Note
Flow Cytometry (Flow)	1-2ug/million cells	
Immunofluorescence (IF)	1-3ug/ml	
Immunohistochemistry (IHC)	1-2ug/ml	30 min at RT. Staining of formalin-fixed tissues requires heating tissue sections in 10mM Tris with 1mM EDTA, pH 9.0, for 45 min at 95°C followed by cooling at RT for 20 minutes
Western Blot (WB)	2-4ug/ml	

### Product Details

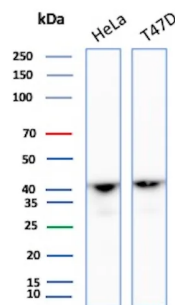
<b>Clone</b>	ACTA1/360
<b>Gene Name</b>	ACTA1
<b>Immunogen</b>	Recombinant human ACTA1 protein
<b>Host</b>	Mouse
<b>Clonality</b>	Monoclonal
<b>Isotype / Light Chain</b>	IgG1 / Kappa
<b>Mol. Weight of Antigen</b>	43kDa
<b>Cellular Localization</b>	Cytoplasm, Cytoskeleton
<b>Species Reactivity</b>	Human
<b>Positive Control</b>	Skeletal muscle, HeLa or T47D cells

\*Optimal dilution for a specific application should be determined.

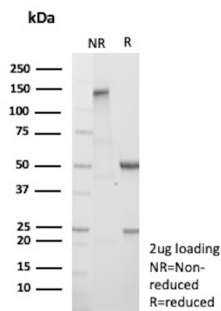
### Product Images for Actin alpha 1, Skeletal Muscle Antibody



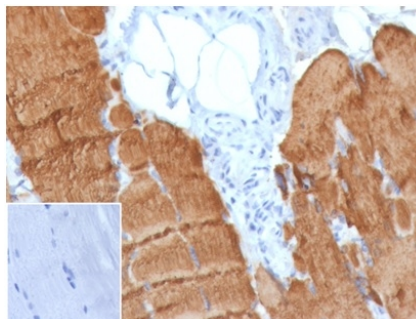
Formalin-fixed, paraffin-embedded human skeletal muscle stained with Skeletal Muscle Actin Mouse Monoclonal (ACTA1/360). HIER: Tris/EDTA, pH9.0, 45min. 2 °: HRP-polymer, 30min. AB, 5min.



Western Blot Analysis of HeLa, T47D lysate using Actin alpha 1, Skeletal Muscle Mouse Monoclonal Antibody (ACTA1/360)



SDS-PAGE Analysis Purified ACTA1 Mouse Monoclonal Antibody (ACTA1/360). Confirmation of Purity and Integrity of Antibody.



Formalin-fixed, paraffin-embedded human skeletal muscle stained with Skeletal Muscle Actin Mouse Monoclonal (ACTA1/360). Inset: PBS instead of primary antibody; secondary only negative control.

### Specificity & Comments

All eukaryotic cells express Actin, which often constitutes as much as 50% of total cellular protein. Actin filaments can form both stable and labile structures and are crucial components of microvilli and the contractile apparatus of muscle cells. While lower eukaryotes, such as yeast, have only one Actin gene, higher eukaryotes have several isoforms encoded by a family of genes. At least six types of Actin are present in mammalian tissues and fall into three classes. a-Actin expression is limited to various types of muscle, whereas b and g are the principle constituents of filaments in other tissues. Members of the small GTPase family regulate the organization of the Actin cytoskeleton. Rho controls the assembly of Actin stress fibers and focal adhesion, Rac regulates Actin filament accumulation at the plasma membrane and Cdc42 stimulates formation of filopodia.

### Limitations and Warranty

This antibody is available for research use only and is not approved for use in diagnosis. There are no warranties, expressed or implied, which extend beyond this description. Company is not liable for any personal injury or economic loss resulting from this product.

### Supplied As

200ug/ml of Ab purified from Bioreactor Concentrate by Protein A/G. Prepared in 10mM PBS with 0.05% BSA & 0.05% azide. Also available WITHOUT BSA & azide at 1.0mg/ml.

### Storage and Stability

Antibody with azide - store at 2 to 8 °C. Antibody without azide - store at -20 to -80 °C. Antibody is stable for 24 months. Non-hazardous. No MSDS required.

### Research Areas

Cardiovascular