

Recombinant Actin, Smooth Muscle (Leiomyosarcoma Marker) Antibody

Rabbit Monoclonal Antibody [Clone ACTA2/1614R]

Catalog No	Format	Size
59-RBM4-P0	Purified Ab with BSA and Azide at 200ug/ml	20 ug
59-RBM4-P1	Purified Ab with BSA and Azide at 200ug/ml	100 ug
59-RBM4-P1ABX	Purified Ab WITHOUT BSA and Azide at 1.0mg/ml	100 ug

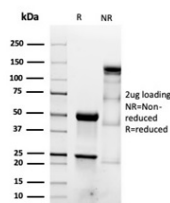
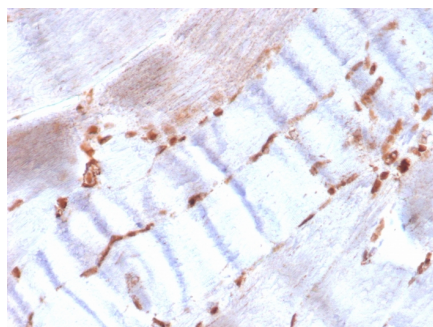
Applications	Tested Dillution	Note
Immunohistochemistry (IHC)	1-2ug/ml	30 min at RT. Staining of formalin-fixed tissues requires heating tissue sections in 10mM Tris with 1mM EDTA, pH 9.0, for 45 min at 95°C followed by cooling at RT for 20 minutes
Western Blot (WB)	2-4ug/ml	

Product Details

Clone	ACTA2/1614R
Gene Name	ACTA2
Immunogen	Recombinant full-length human ACTA2 protein
Host	Rabbit
Clonality	Monoclonal
Isotype / Light Chain	IgG / Kappa
Mol. Weight of Antigen	42kDa
Cellular Localization	Cytoplasm, Cytoskeleton
Species Reactivity	Human
Positive Control	Human skeletal muscle, Human uterus or leiomyosarcoma, Mouse 3T3 cells

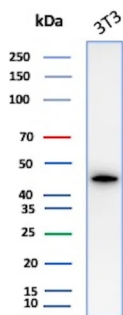
*Optimal dilution for a specific application should be determined.

Product Images for Recombinant Actin, Smooth Muscle (Leiomyosarcoma Marker) Antibody

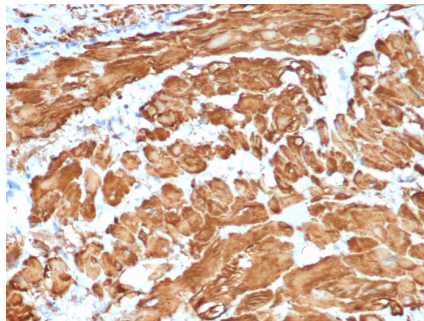


Formalin-fixed, paraffin-embedded human skeletal muscle stained with Smooth Muscle Actin Recombinant Rabbit Monoclonal (ACTA2/1614R).

SDS-PAGE Analysis of Purified SMA Recombinant Rabbit Monoclonal Antibody (ACTA2/1614R). Confirmation of Integrity and Purity of Antibody.



Western Blot Analysis of Mouse 3T3 lysate using ACTA2 Rabbit Recombinant Monoclonal Antibody (ACTA2/1614R).



Formalin-fixed, paraffin-embedded human uterus stained with Smooth Muscle Actin Recombinant Rabbit Monoclonal (ACTA2/1614R).

Specificity & Comments

Actin is a major component of the cytoskeleton and is present in most cell types. It is highly specific to actin from smooth muscles. This MAb does not stain cardiac or skeletal muscle; however, it does stain myofibroblasts and myoepithelial cells. This antibody could be used together with anti-muscle specific actin and myogenin in making a diagnosis of smooth muscle and skeletal muscle tumors. In most cases of rhabdomyosarcoma, this antibody yields negative results whereas anti-muscle specific actin and myogenin are positive. Leiomyosarcomas are positive only with anti-muscle specific actin and anti-smooth muscle actin and are negative with anti-myogenin.

Supplied As

200ug/ml of Ab purified from Bioreactor Concentrate by Protein A/G. Prepared in 10mM PBS with 0.05% BSA & 0.05% azide. Also available WITHOUT BSA & azide at 1.0mg/ml.

Storage and Stability

Antibody with azide - store at 2 to 8 °C. Antibody without azide - store at -20 to -80 °C. Antibody is stable for 24 months. Non-hazardous. No MSDS required.

Research Areas

Cardiovascular, Mesenchymal Stem Cell Differentiation, Signal Transduction

Limitations and Warranty

This antibody is available for research use only and is not approved for use in diagnosis. There are no warranties, expressed or implied, which extend beyond this description. Company is not liable for any personal injury or economic loss resulting from this product.