

Recombinant Retinol Binding Protein-1 (RBP1) Antibody

Mouse Monoclonal Antibody [Clone rRBP1/872]

Catalog No	Format	Size
5947-MSM4-P0	Purified Ab with BSA and Azide at 200ug/ml	20 ug
5947-MSM4-P1	Purified Ab with BSA and Azide at 200ug/ml	100 ug
5947-MSM4-P1ABX	Purified Ab WITHOUT BSA and Azide at 1.0mg/ml	100 ug

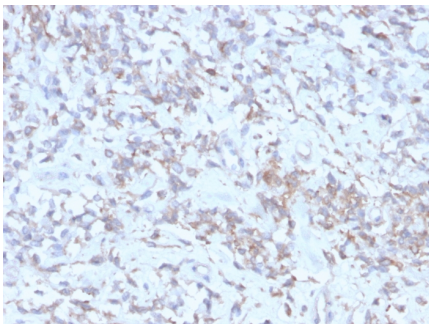
Applications	Tested Dillution	Note
Immunohistochemistry (IHC)	1-2ug/ml	30 min at RT. Staining of formalin-fixed tissues requires heating tissue sections in 10mM Tris with 1mM EDTA, pH 9.0, for 45 min at 95°C followed by cooling at RT for 20 minutes

Product Details

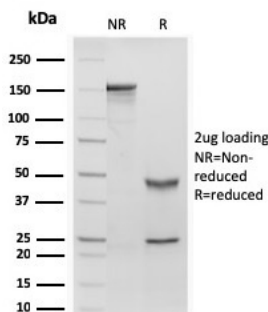
Clone	rRBP1/872
Gene Name	RBP1
Immunogen	Recombinant full-length human RBP protein
Host	Mouse
Clonality	Monoclonal
Isotype / Light Chain	IgG1 / Kappa
Mol. Weight of Antigen	21-25kDa
Cellular Localization	Cytoplasm, Lipid droplet
Species Reactivity	Chimpanzee, Goat, Human, Monkey, Mouse, Rabbit, Rat
Positive Control	Human Hepatic or Ovarian Carcinoma tissues (IHC).

*Optimal dilution for a specific application should be determined.

Product Images for Recombinant Retinol Binding Protein-1 (RBP1) Antibody



Formalin-fixed, paraffin-embedded human Hepatocellular Carcinoma stained with RBP1 Recombinant Mouse Monoclonal Antibody (rRBP1/872).



SDS-PAGE Analysis of Purified RBP1 Recombinant Mouse Monoclonal Antibody (rRBP1/872). Confirmation of Purity and Integrity of Antibody.

Specificity & Comments

This MAb recognizes an epitope within the 74-182 C-terminal sequence (11kD peptide fragment) of human serum Cellular Retinol Binding Protein 1 (CRBP 1), a single-chain glycoprotein belonging to the superfamily of hydrophobic molecule transporter proteins, which is responsible for transport of retinol (vitamin A1) from the liver to peripheral target tissues, like the eye, where it mediates the cellular uptake. CRBP 1 is synthesized by hepatic parenchymal cells where it becomes bound to its ligand retinol and is then released into the circulation, where it binds further to the protein transthyretin, to form a transporting complex, which is big enough not to be lost by filtration through the kidney glomeruli. It is detected in nearly all tissues with higher expression in adult ovary, pancreas, pituitary gland, adrenal gland, and fetal liver.

2 Union Square, Union City, CA 94587, Tel: 1-866-2-NEOBIO (1-866-263-6246)
orders@NeoBiotechnologies.com, www.NeoBiotechnologies.com

Supplied As

200ug/ml of Ab Purified from Bioreactor Concentrate by Protein A/G. Prepared in 10mM PBS with 0.05% BSA & 0.05% azide. Also available WITHOUT BSA & azide at 1.0mg/ml.

Storage and Stability

Antibody with azide - store at 2 to 8°C. Antibody without azide - store at -20 to -80°C. Antibody is stable for 24 months. Non-hazardous. No MSDS required.

Research Areas

Infectious Disease

Limitations and Warranty

This antibody is available for research use only and is not approved for use in diagnosis. There are no warranties, expressed or implied, which extend beyond this description. Company is not liable for any personal injury or economic loss resulting from this product.
