

Replication Protein A2 (RPA2) Antibody

Mouse Monoclonal Antibody [Clone RPA2/2106]

| Catalog No | Format | Size |
|-----------------|---|--------|
| 6118-MSM1-P0 | Purified Ab with BSA and Azide at 200ug/ml | 20 ug |
| 6118-MSM1-P1 | Purified Ab with BSA and Azide at 200ug/ml | 100 ug |
| 6118-MSM1-P1ABX | Purified Ab WITHOUT BSA and Azide at 1.0mg/ml | 100 ug |

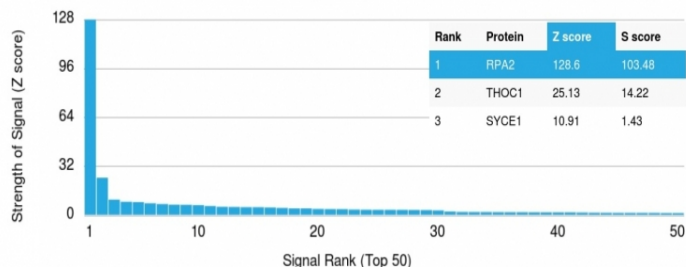
| Applications | Tested Dillution | Note |
|-------------------|------------------|------|
| Western Blot (WB) | 2-4ug/ml | |

Product Details

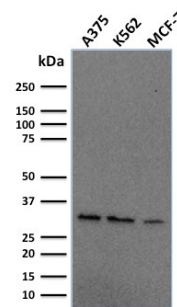
| | |
|-------------------------------|---|
| Clone | RPA2/2106 |
| Gene Name | RPA2 |
| Immunogen | Recombinant human full-length Replication protein A2 (RPA2) protein |
| Host | Mouse |
| Clonality | Monoclonal |
| Isotype / Light Chain | IgG2b / Kappa |
| Mol. Weight of Antigen | 32-34kDa |
| Cellular Localization | Nucleus, PML body |
| Species Reactivity | Human |
| Positive Control | HeLa or HepG2 cells. Human tonsil (IHC)., MCF-7 |

*Optimal dilution for a specific application should be determined.

Product Images for Replication Protein A2 (RPA2) Antibody



Analysis of Protein Array containing more than 19,000 full-length human proteins using Replication Protein A2 Mouse Monoclonal Antibody (RPA2/2106). Z- and S- Score: The Z-score represents the strength of a signal that a monoclonal antibody (MAb) (in combination with a fluorescently-tagged anti-IgG secondary antibody) produces when binding to a particular protein on the HuProt™ array. Z-scores are described in units of standard deviations (SD's) above the mean value of all signals generated on that array. If targets on HuProt™ are arranged in descending order of the Z-score, the S-score is the difference (also in units of SD's) between the Z-score. S-score therefore represents the relative target specificity of a MAb to its intended target. A MAb is considered to be specific to its intended target, if the MAb has an S-score of at least 2.5. For example, if a MAb binds to protein X with a Z-score of 43 and to protein Y with a Z-score of 14, then the S-score for the binding of that MAb to protein X is equal to 29.



Western blot analysis of human A375, K562 & MCF-7 cell lysates using Replication Protein A2 Mouse Monoclonal Antibody (RPA2/2106).

Specificity & Comments

Recognizes a protein of 34kDa, identified as a subunit of Replication Protein A (RPA) (also known as human single-stranded DNA binding protein, or HSSB). RPA from human cells is a stable heterotrimer of 70kDa, 32-34kDa, and 11-14kDa subunits (RPA70, RPA32, and RPA14 respectively). It is involved in DNA replication, repair, and recombination. RPA is required for the SV40 large tumor antigen-catalyzed unwinding of SV40 DNA and stimulates DNA polymerase (pol) alpha and delta. RPA34 is phosphorylated at the G1/S boundary of the cell cycle or upon exposure of cells to DNA damage-inducing agents including ionizing and UV radiation.

Limitations and Warranty

This antibody is available for research use only and is not approved for use in diagnosis. There are no warranties, expressed or implied, which extend beyond this description. Company is not liable for any personal injury or economic loss resulting from this product.

Supplied As

200ug/ml of Ab Purified from Bioreactor Concentrate by Protein A/G. Prepared in 10mM PBS with 0.05% BSA & 0.05% azide. Also available WITHOUT BSA & azide at 1.0mg/ml.

Storage and Stability

Antibody with azide - store at 2 to 8°C. Antibody without azide - store at -20 to -80°C. Antibody is stable for 24 months. Non-hazardous. No MSDS required.

Research Areas

Infectious Disease, Nuclear Marker, Transcription Factors
