

S100A2 / S100 Calcium Binding Protein A2 Antibody

Mouse Monoclonal Antibody [Clone CPTC-S100A2-2]

Catalog No	Format	Size
6273-MSM1-P0	Purified Ab with BSA and Azide at 200ug/ml	20 ug
6273-MSM1-P1	Purified Ab with BSA and Azide at 200ug/ml	100 ug
6273-MSM1-P1ABX	Purified Ab WITHOUT BSA and Azide at 1.0mg/ml	100 ug

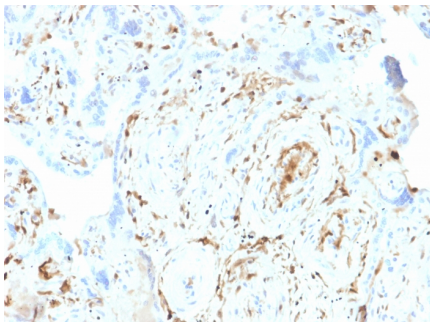
Applications	Tested Dillution	Note
Flow Cytometry (Flow)	1-2ug/million cells	
Immunofluorescence (IF)	1-3ug/ml	
Immunohistochemistry (IHC)	1-2ug/ml	30 min at RT. Staining of formalin-fixed tissues requires heating tissue sections in 10mM Tris with 1mM EDTA, pH 9.0, for 45 min at 95°C followed by cooling at RT for 20 minutes
Western Blot (WB)	2-4ug/ml	

Product Details

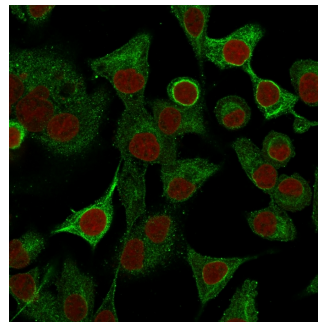
Clone	CPTC-S100A2-2
Gene Name	S100A2
Immunogen	Recombinant full-length human S100A2 protein
Host	Mouse
Clonality	Monoclonal
Isotype / Light Chain	IgG2b / Kappa
Mol. Weight of Antigen	11.12kDa
Species Reactivity	Human
Positive Control	BxPC3 and A431 cell lysates; Skin and squamous cell cervical carcinoma., A549

*Optimal dilution for a specific application should be determined.

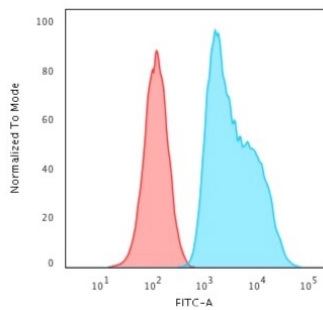
Product Images for S100A2 / S100 Calcium Binding Protein A2 Antibody



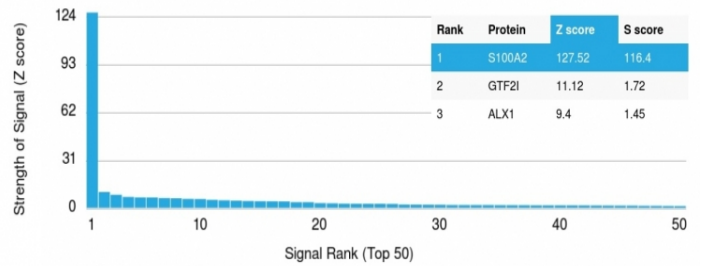
Formalin-fixed, paraffin-embedded human Placenta stained with S100A2 Mouse Monoclonal Antibody (CPTC-S100A2-2).



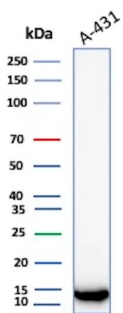
Immunofluorescence Analysis of A549 cells labeling S100A2 with S100A2 Mouse Monoclonal Antibody (CPTC-S100A2-2) followed by Goat anti-Mouse IgG-CF488 (Green). The nuclear counterstain is Reddot (Red)



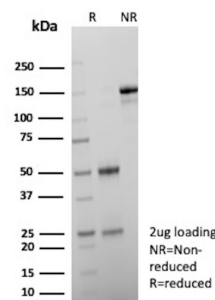
Flow Cytometric Analysis of trypsinised HeLa cells. S100A2 Mouse Monoclonal Antibody (CPTC-S100A2-2) followed by Goat anti-Mouse IgG-CF488 (Blue); Isotype Control (Red).



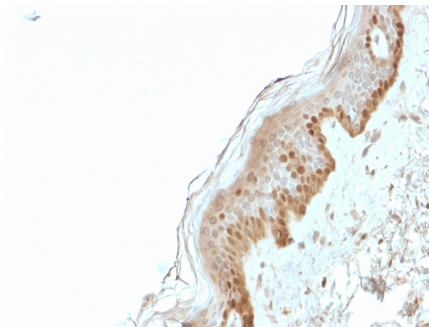
Analysis of Protein Array containing more than 19,000 full-length human proteins using S100A2 Mouse Monoclonal Antibody (CPTC-S100A2-2). Z- and S- Score: The Z-score represents the strength of a signal that a monoclonal antibody (MAb) (in combination with a fluorescently-tagged anti-IgG secondary antibody) produces when binding to a particular protein on the HuProt™ array. Z-scores are described in units of standard deviations (SD's) above the mean value of all signals generated on that array. If targets on HuProt™ are arranged in descending order of the Z-score, the S-score is the difference (also in units of SD's) between the Z-score. S-score therefore represents the relative target specificity of a MAb to its intended target. A MAb is considered to specific to its intended target, if the MAb has an S-score of at least 2.5. For example, if a MAb binds to protein X with a Z-score of 43 and to protein Y with a Z-score of 14, then the S-score for the binding of that MAb to protein X is equal to 29.



Western Blot Analysis of A-431 lysate using S100A2 Mouse Monoclonal Antibody (CPTC-S100A2-2)



SDS-PAGE Analysis Purified S100A2 Mouse Monoclonal Antibody (CPTC-S100A2-2). Confirmation of Purity and Integrity of Antibody.



Formalin-fixed, paraffin-embedded human Skin stained with S100A2 Mouse Monoclonal Antibody (CPTC-S100A2-2).

Specificity & Comments

S100A2 belongs to the S100 family of proteins containing 2 EF-hand calcium-binding motifs. S100A2 may function as a modulator against excess calcium accumulation in normal human mammary epithelial cells and also have a role in suppressing tumor cell growth. This protein may have a tumor suppressor function. Chromosomal rearrangements and altered expression of this gene have been implicated in breast cancer. Cytoplasmic overexpression may also be of prognostic significance when observed in oral cancer patients, and the S100A2 has also been identified as significantly down-regulated in gastric cancer.

Supplied As

200ug/ml of Ab Purified from Bioreactor Concentrate by Protein A/G. Prepared in 10mM PBS with 0.05% BSA & 0.05% azide. Also available WITHOUT BSA & azide at 1.0mg/ml.

Storage and Stability

Antibody with azide - store at 2 to 8°C. Antibody without azide - store at -20 to -80°C. Antibody is stable for 24 months. Non-hazardous. No MSDS required.

Limitations and Warranty

This antibody is available for research use only and is not approved for use in diagnosis. There are no warranties, expressed or implied, which extend beyond this description. Company is not liable for any personal injury or economic loss resulting from this product.
