

S100A4 / Metastasin / Calvasculin (Marker of Tumor Metastasis) Antibody

Mouse Monoclonal Antibody [Clone S100A4/1482]

Catalog No	Format	Size
6275-MSM2-P0	Purified Ab with BSA and Azide at 200ug/ml	20 ug
6275-MSM2-P1	Purified Ab with BSA and Azide at 200ug/ml	100 ug
6275-MSM2-P1ABX	Purified Ab WITHOUT BSA and Azide at 1.0mg/ml	100 ug

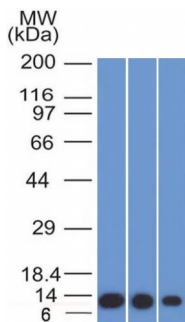
Applications	Tested Dillution	Note
Flow Cytometry (Flow)	1-2ug/million cells	
Immunofluorescence (IF)	1-3ug/ml	
Immunohistochemistry (IHC)	1-2ug/ml	30 min at RT. Staining of formalin-fixed tissues requires heating tissue sections in 10mM Tris with 1mM EDTA, pH 9.0, for 45 min at 95°C followed by cooling at RT for 20 minutes
Western Blot (WB)	2-4ug/ml	

Product Details

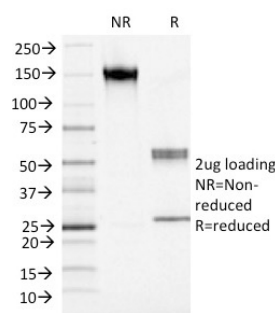
Clone	S100A4/1482
Gene Name	S100A4
Immunogen	Recombinant fragment of human S100A4 protein (aa1-200) (exact sequence is proprietary)
Host	Mouse
Clonality	Monoclonal
Isotype / Light Chain	IgG1 / Kappa
Mol. Weight of Antigen	10-12kDa
Cellular Localization	Cytoplasm, Nucleus, Secreted
Species Reactivity	Human, Mouse
Positive Control	A549 or A375 cells. Placenta., HeLa

*Optimal dilution for a specific application should be determined.

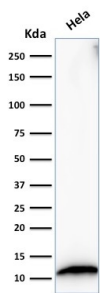
Product Images for S100A4 / Metastasin / Calvasculin (Marker of Tumor Metastasis) Antibody



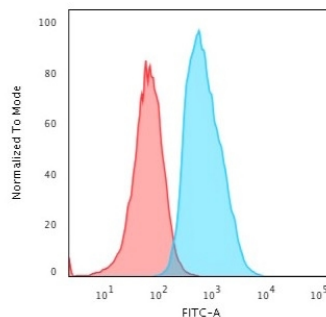
Western Blot of HeLa, A549 and A375 cell lysate using S100A4 Mouse Monoclonal Antibody (S100A4/1482).



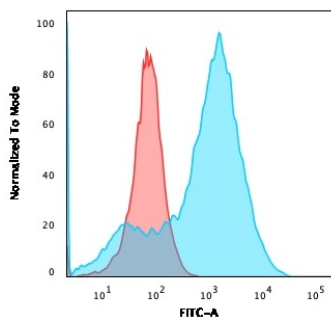
SDS-PAGE Analysis Purified S100A4 Mouse Monoclonal Antibody (S100A4/1482). Confirmation of Integrity and Purity of Antibody.



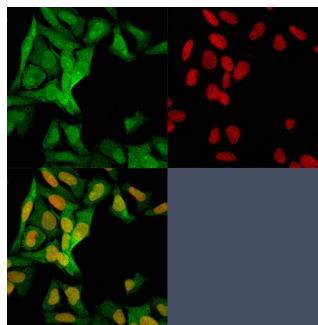
Western Blot Analysis of HeLa cell lysate using S100A4 Mouse Monoclonal Antibody (S100A4/1482).



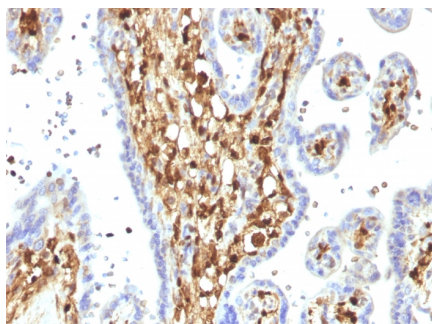
Flow Cytometric Analysis of T98G cells using S100A4 Mouse Monoclonal Antibody (S100A4/1482) followed by Goat anti-Mouse IgG-CF488 (Blue); Isotype Control (Red).



Flow Cytometric Analysis of A549 cells using S100A4 Mouse Monoclonal Antibody (S100A4/1482) followed by Goat anti-Mouse IgG-CF488 (Blue); Isotype Control (Red).



Confocal immunofluorescence image of HeLa Cells using S100A4 Mouse Monoclonal Antibody (S100A4/1482) followed by goat anti-mouse IgG-CF488 (green). Reddot is used to label the nuclei Red.



Formalin-fixed, paraffin-embedded human Placenta stained with S100A4 Mouse Monoclonal Antibody (S100A4/1482).

Specificity & Comments

S100A4 belongs to the S100 super-family of proteins containing 2 EF-hand calcium-binding domains. S100 genes include at least 25 members, including S100A1-S100A18, trichohyalin, filaggrin, repetin, S100P, and S100Z. S100A4 exerts its function via direct interaction with a number of proteins including P53, P63, non-muscle myosin IIA, 64 integrin, and liprin b1. S100A4 is overexpressed in highly metastatic cancers, which makes it useful as a marker of tumor progression.

Supplied As

200ug/ml of Ab Purified from Bioreactor Concentrate by Protein A/G. Prepared in 10mM PBS with 0.05% BSA & 0.05% azide. Also available WITHOUT BSA & azide at 1.0mg/ml.

Storage and Stability

Antibody with azide - store at 2 to 8°C. Antibody without azide - store at -20 to -80°C. Antibody is stable for 24 months. Non-hazardous. No MSDS required.

Research Areas

Dendritic Cell Marker

Limitations and Warranty

This antibody is available for research use only and is not approved for use in diagnosis. There are no warranties, expressed or implied, which extend beyond this description. Company is not liable for any personal injury or economic loss resulting from this product.