

Recombinant Calprotectin / MRP14 / S100A9 / Calgranulin B Antibody

Mouse Monoclonal Antibody [Clone rMAC3781]

Catalog No	Format	Size
6279-MSM6-P0	Purified Ab with BSA and Azide at 200ug/ml	20 ug
6279-MSM6-P1	Purified Ab with BSA and Azide at 200ug/ml	100 ug
6279-MSM6-P1ABX	Purified Ab WITHOUT BSA and Azide at 1.0mg/ml	100 ug

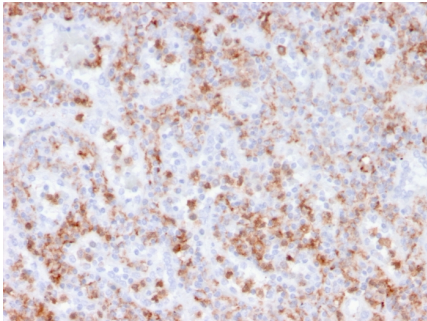
Applications	Tested Dillution	Note
Immunohistochemistry (IHC)	1-2ug/ml	30 min at RT. Staining of formalin-fixed tissues requires heating tissue sections in 10mM Tris with 1mM EDTA, pH 9.0, for 45 min at 95°C followed by cooling at RT for 20 minutes

Product Details

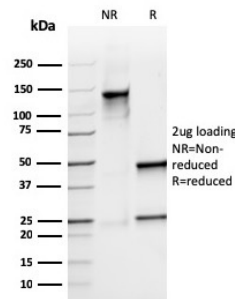
Clone	rMAC3781
Gene Name	S100A8
Immunogen	Affinity Purified monocyte membrane preparation
Host	Mouse
Clonality	Monoclonal
Isotype / Light Chain	IgG1 / Kappa
Mol. Weight of Antigen	12-14kDa (doublet)
Cellular Localization	Cell membrane, Cytoplasm, Cytoskeleton, Secreted
Species Reactivity	Baboon, Cat, Cow, Dog, Goat, Guinea Pig, Horse, Human, Monkey, Mouse, Pig, Rabbit, Rat
Positive Control	lymph node or spleen., Tonsil

*Optimal dilution for a specific application should be determined.

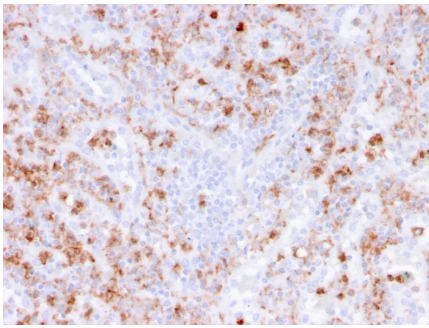
Product Images for Recombinant Calprotectin / MRP14 / S100A9 / Calgranulin B Antibody



Formalin-fixed, paraffin-embedded human spleen stained with S100A9 Recombinant Mouse Monoclonal Antibody (rMAC3781).



SDS-PAGE Analysis of Purified S100A9 Recombinant Mouse Monoclonal Antibody (rMAC3781). Confirmation of Integrity and Purity of Antibody



Formalin-fixed, paraffin-embedded human spleen stained with S100A9 Recombinant Mouse Monoclonal Antibody (rMAC3781).

Specificity & Comments

Recognizes the L1 or Calprotectin molecule, an intra-cytoplasmic antigen comprising of a 12kDa alpha chain and a 14kDa beta chain expressed by granulocytes, monocytes and by tissue macrophages. Macrophages usually arise from hematopoietic stem cells in the bone marrow. Under migration into tissues, the monocytes undergo further differentiation to become multifunctional tissue macrophages. They are classified into normal and inflammatory macrophages. Normal macrophages include macrophages in connective tissue (histiocytes), liver (Kupffer s cells), lung (alveolar macrophages), lymph nodes (free and fixed macrophages), spleen (free and fixed macrophages), bone marrow (fixed macrophages), serous fluids (pleural and peritoneal macrophages), skin (histiocytes, Langerhans's cell) and in other tissues. Inflammatory macrophages are present in various exudates. Macrophages are part of the innate immune system, recognizing, engulfing and destroying many potential pathogens including bacteria, pathogenic protozoa, fungi and helminthes. This MAb reacts with neutrophils, monocytes, macrophages, and squamous mucosal epithelia and has been shown as an important marker for identifying macrophages in tissue sections.

Limitations and Warranty

This antibody is available for research use only and is not approved for use in diagnosis. There are no warranties, expressed or implied, which extend beyond this description. Company is not liable for any personal injury or economic loss resulting from this product.

Supplied As

200ug/ml of Ab Purified from Bioreactor Concentrate by Protein A/G. Prepared in 10mM PBS with 0.05% BSA & 0.05% azide. Also available WITHOUT BSA & azide at 1.0mg/ml.

Storage and Stability

Antibody with azide - store at 2 to 8°C. Antibody without azide - store at -20 to -80°C. Antibody is stable for 24 months. Non-hazardous. No MSDS required.

Research Areas

Immunology, Infectious Disease, Signal Transduction
