

Serum Amyloid A Antibody

Mouse Monoclonal Antibody [Clone SAA/326]

Catalog No	Format	Size
6288-MSM1-P0	Purified Ab with BSA and Azide at 200ug/ml	20 ug
6288-MSM1-P1	Purified Ab with BSA and Azide at 200ug/ml	100 ug
6288-MSM1-P1ABX	Purified Ab WITHOUT BSA and Azide at 1.0mg/ml	100 ug

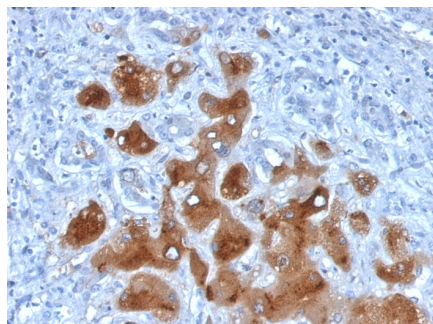
Applications	Tested Dillution	Note
Immunohistochemistry (IHC)	1-2ug/ml	30 min at RT. Staining of formalin-fixed tissues requires heating tissue sections in 10mM Tris with 1mM EDTA, pH 9.0, for 45 min at 95°C followed by cooling at RT for 20 minutes

Product Details

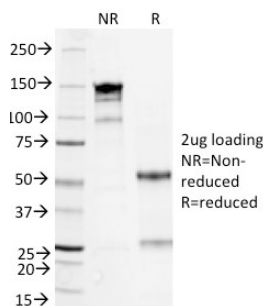
Clone	SAA/326
Gene Name	NA, SAA1
Immunogen	Recombinant full-length human serum amyloid A (SAA) protein
Host	Mouse
Clonality	Monoclonal
Isotype / Light Chain	IgG2a / Kappa
Mol. Weight of Antigen	12kDa
Cellular Localization	N/A
Species Reactivity	Human
Positive Control	Caki-1 cells. Pancreas or Liver.

*Optimal dilution for a specific application should be determined.

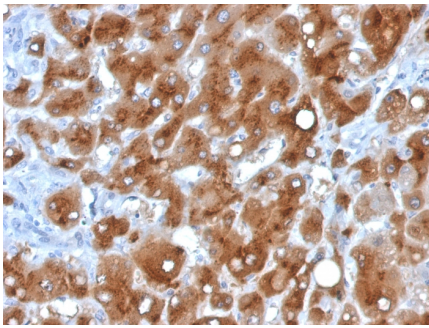
Product Images for Serum Amyloid A Antibody



Formalin-fixed, paraffin-embedded human Hepatocellular Carcinoma stained with Serum Amyloid A Mouse Monoclonal Antibody (SAA/326).



SDS-PAGE Analysis of Purified Serum Amyloid A Mouse Monoclonal Antibody (SAA/326). Confirmation of Purity and Integrity of Antibody.



Formalin-fixed, paraffin-embedded human Hepatocellular Carcinoma stained with Serum Amyloid A Mouse Monoclonal Antibody (SAA/326).

Specificity & Comments

This antibody reacts with natural and recombinant human Serum Amyloid A (SAA) and does not cross-react with other human cytokines or growth factors. Human SAA proteins are a group of apolipoproteins found predominantly in the high-density lipoprotein (HDL) fraction of plasma. SAA is a major acute-phase protein and precursor to amyloid A protein, which is the major constituent of the fibril deposits of reactive amyloidosis. SAA is secreted in large amounts by the liver during microbial infections or inflammatory diseases.

Limitations and Warranty

This antibody is available for research use only and is not approved for use in diagnosis. There are no warranties, expressed or implied, which extend beyond this description. Company is not liable for any personal injury or economic loss resulting from this product.

Supplied As

200ug/ml of Ab Purified from Bioreactor Concentrate by Protein A/G. Prepared in 10mM PBS with 0.05% BSA & 0.05% azide. Also available WITHOUT BSA & azide at 1.0mg/ml.

Storage and Stability

Antibody with azide - store at 2 to 8°C. Antibody without azide - store at -20 to -80°C. Antibody is stable for 24 months. Non-hazardous. No MSDS required.

Research Areas

Immunology, Signal Transduction
