

## Recombinant SDHB (Succinate Dehydrogenase B) (Pheochromocytoma Marker) Antibody

Rabbit Monoclonal Antibody [Clone SDHB/6697R]

Catalog No	Format	Size
6390-RBM7-P0	Purified Ab with BSA and Azide at 200ug/ml	20 ug
6390-RBM7-P1	Purified Ab with BSA and Azide at 200ug/ml	100 ug
6390-RBM7-P1ABX	Purified Ab WITHOUT BSA and Azide at 1.0mg/ml	100 ug

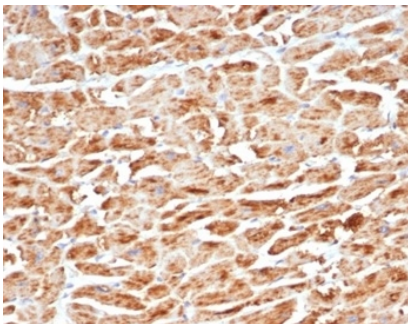
Applications	Tested Dillution	Note
Immunohistochemistry (IHC)	1-2ug/ml	30 min at RT. Staining of formalin-fixed tissues requires heating tissue sections in 10mM Tris with 1mM EDTA, pH 9.0, for 45 min at 95°C followed by cooling at RT for 20 minutes

### Product Details

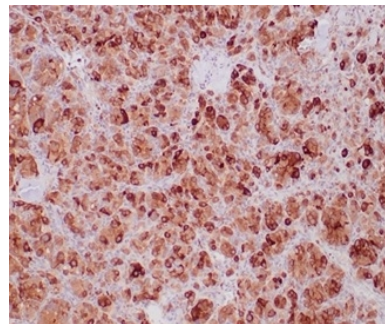
<b>Clone</b>	SDHB/6697R
<b>Gene Name</b>	SDHB
<b>Immunogen</b>	Synthetic peptide corresponding to residues in human SDHB was used as an immunogen
<b>Host</b>	Rabbit
<b>Clonality</b>	Monoclonal
<b>Isotype / Light Chain</b>	IgG / Kappa
<b>Mol. Weight of Antigen</b>	32kDa
<b>Cellular Localization</b>	Mitochondrion inner membrane
<b>Species Reactivity</b>	Human
<b>Positive Control</b>	Jurkat or HepG2 cells. Human kidney or heart tissue.

\*Optimal dilution for a specific application should be determined.

### Product Images for Recombinant SDHB (Succinate Dehydrogenase B) (Pheochromocytoma Marker) Antibody



Formalin-fixed, paraffin-embedded human heart stained with SDHB Recombinant Rabbit Monoclonal Antibody (SDHB/6697R).



Formalin-fixed, paraffin-embedded human paraganglioma stained with SDHB Recombinant Rabbit Monoclonal Antibody (SDHB/6697R).

### Specificity & Comments

Succinate dehydrogenase B (SDHB) is an iron-sulfur subunit of mitochondrial complex II, a key component of the citric acid cycle and the electron transport chain, a respiratory complex that catalyzes the oxidation of succinate in the mitochondrial membrane. Many cancers are generally positive for SDHB, including renal cell carcinomas and gastrointestinal stromal tumors. A subset of RCC and GIST tumors that are associated with SDH mutations, Carney-Stratakis Syndrome or Carney Triad exhibit a loss of SDHB expression.

### Supplied As

200ug/ml of Ab purified from Bioreactor Concentrate by Protein A/G. Prepared in 10mM PBS with 0.05% BSA & 0.05% azide. Also available WITHOUT BSA & azide at 1.0mg/ml.

### Storage and Stability

Antibody with azide - store at 2 to 8 °C. Antibody without azide - store at -20 to -80 °C. Antibody is stable for 24 months. Non-hazardous. No MSDS required.

### Research Areas

Cardiovascular, Colon Cancer, Mitochondria Marker

## Limitations and Warranty

This antibody is available for research use only and is not approved for use in diagnosis. There are no warranties, expressed or implied, which extend beyond this description. Company is not liable for any personal injury or economic loss resulting from this product.

---