

## Calcineurin B homologous protein 2 / HCC Antigen 520 Antibody

Mouse Monoclonal Antibody [Clone CPTC-CHP2-1]

Catalog No	Format	Size
63928-MSM1-P0	Purified Ab with BSA and Azide at 200ug/ml	20 ug
63928-MSM1-P1	Purified Ab with BSA and Azide at 200ug/ml	100 ug
63928-MSM1-P1ABX	Purified Ab WITHOUT BSA and Azide at 1.0mg/ml	100 ug

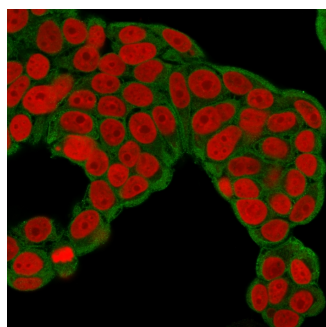
Applications	Tested Dillution	Note
Immunofluorescence (IF)	1-3ug/ml	
Immunohistochemistry (IHC)	1-2ug/ml	30 min at RT. Staining of formalin-fixed tissues requires heating tissue sections in 10mM Tris with 1mM EDTA, pH 9.0, for 45 min at 95°C followed by cooling at RT for 20 minutes
Western Blot (WB)	2-4ug/ml	

### Product Details

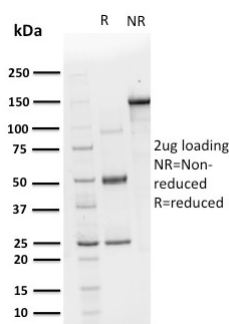
<b>Clone</b>	CPTC-CHP2-1
<b>Gene Name</b>	CHP2
<b>Immunogen</b>	Recombinant human full-length CHP2 protein
<b>Host</b>	Mouse
<b>Clonality</b>	Monoclonal
<b>Isotype / Light Chain</b>	IgG2c / Kappa
<b>Mol. Weight of Antigen</b>	22kDa
<b>Cellular Localization</b>	Cell membrane, Cytoplasm, Nucleus
<b>Species Reactivity</b>	Human
<b>Positive Control</b>	K562 or Jurkat cell lysates. Human appendix or testis., MCF-7

\*Optimal dilution for a specific application should be determined.

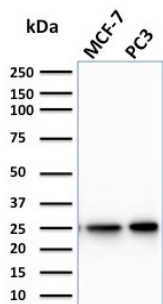
### Product Images for Calcineurin B homologous protein 2 / HCC Antigen 520 Antibody



Immunofluorescence Analysis of human MCF-7 cells labeling CHP2 with CHP2 Mouse Monoclonal Antibody (CPTC-CHP2-1) followed by Goat anti-mouse IgG-CF488 (Green).The nuclear counterstain is Reddot (Red)



SDS-PAGE Analysis of Purified CHP2 Mouse Monoclonal Antibody (CPTC-CHP2-1). Confirmation of Purity and Integrity of Antibody.



Western Blot Analysis of MCF-7 & PC3 cell lysates using CHP2 Mouse Monoclonal Antibody (CPTC-CHP2-1).

### Specificity & Comments

CHP2 (calcineurin B homologous protein 2), also known as hepatocellular carcinoma-associated antigen 520, is a 196 amino acid protein that contains 4 EF-hand domains and plays a potential role in transmembrane Na<sup>+</sup>/H<sup>+</sup> exchange. By binding to and activating NHE-1, CHP2 increases the pH and works to protect cells from serum deprivation-induced death. Though not typically detected in normal tissues, CHP2 is highly expressed in malignantly transformed cells and is therefore considered to be a tumor-associated antigen. Ectopic expression of CHP2 promotes proliferation of HEK293 cells and knockdown of CHP2 mRNA in HepG2 cells inhibits cell proliferation. Like calcineurin B, CHP2 can bind to and stimulate phosphatase activity of calcineurin A and activate the calcineurin/NFAT signaling pathway.

### Limitations and Warranty

This antibody is available for research use only and is not approved for use in diagnosis. There are no warranties, expressed or implied, which extend beyond this description. Company is not liable for any personal injury or economic loss resulting from this product.

### Supplied As

200ug/ml of Ab purified from Bioreactor Concentrate by Protein A/G. Prepared in 10mM PBS with 0.05% BSA & 0.05% azide. Also available WITHOUT BSA & azide at 1.0mg/ml.

### Storage and Stability

Antibody with azide - store at 2 to 8°C. Antibody without azide - store at -20 to -80°C. Antibody is stable for 24 months. Non-hazardous. No MSDS required.